

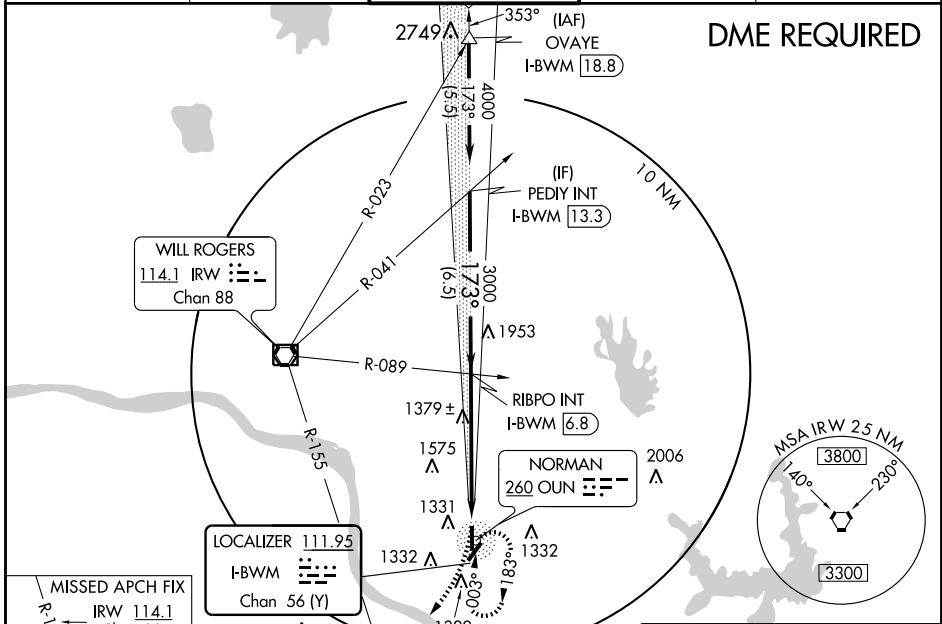
# ILS or LOC RWY 17

LOC/DME I-BWM <b>111.95</b> Chan <b>56 (Y)</b>	APP CRS <b>173°</b>	Rwy Idg <b>5199</b> TDZE <b>1182</b> Apt Elev <b>1182</b>
--	------------------------	---

NORMAN/UNIVERSITY OF OKLAHOMA WESTHEIMER (OUN)

<p>▼ If local altimeter setting not received, use Will Rogers altimeter setting and increase DA to 1423 feet; increase all MDAs 60 feet. VDP NA with Will Rogers altimeter setting. Circling not authorized southeast of Rwy 3-21.</p>	<p>MALSR AS</p>	<p>MISSED APPROACH: Climbing right turn to 3000 via heading 185° and IRW VORTAC R-155 to WETIX/IRW 22.4 DME and hold.</p>
--	---------------------	---

AWOS-3 <b>119.55</b>	OKE CITY APP CON <b>120.45 288.325</b>	WESTHEIMER TOWER ★ <b>118.0 (CTAF)</b>	GND CON <b>121.6</b>	UNICOM <b>122.95</b>
-------------------------	---	---	-------------------------	-------------------------



MISSED APCH FIX IRW 114.1 Chan 88

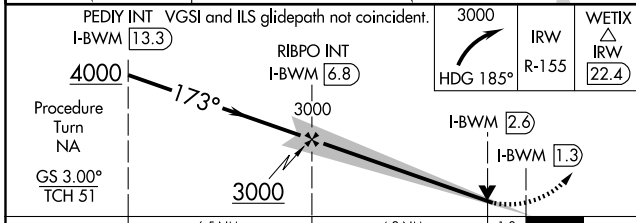
WETIX IRW 22.4

335°

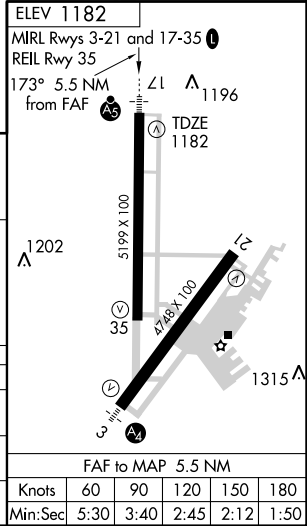
155°

155°

335°



CATEGORY	A	B	C	D
S-ILS 17	1382-1/2		200 (200-1/2)	
S-LOC 17	1680-1/2	498 (500-1/2)	1680-3/4 498 (500-3/4)	1680-1 498 (500-1)
CIRCLING	1680-1	498 (500-1)	1680-1/2 498 (500-1/2)	1740-2 558 (600-2)



SC-1, 22 OCT 2009 to 19 NOV 2009

SC-1, 22 OCT 2009 to 19 NOV 2009