

RNAV (GPS) RWY 14

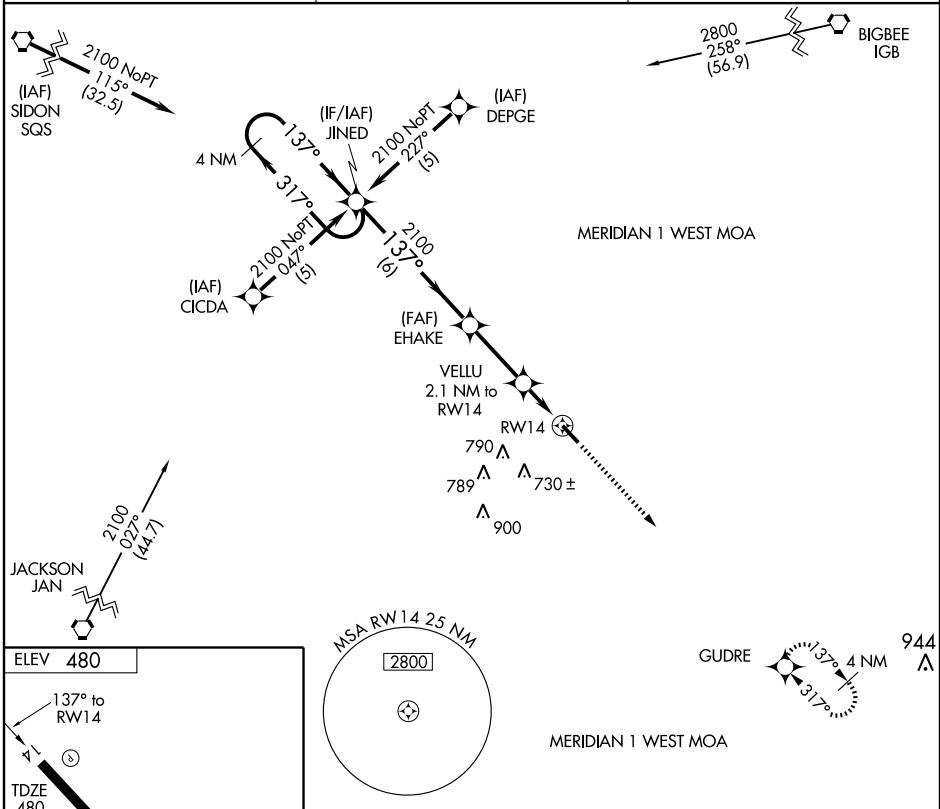
KOSCIUSKO-ATTALA COUNTY (OSX)

APP CRS 137°	Rwy Idg 5000
	TDZE 480
	Apt Elev 480

⚠ DME/DME RNP-0.3 NA. Procedure not authorized at night. Use Philadelphia altimeter setting; if not received, use Greenwood altimeter setting and increase all MDAs 80 feet.

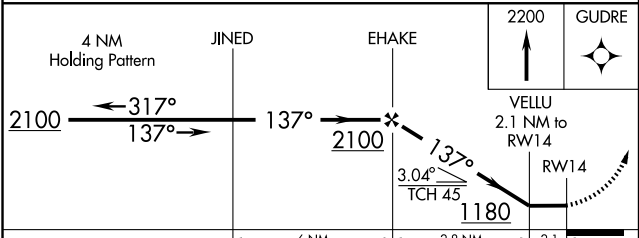
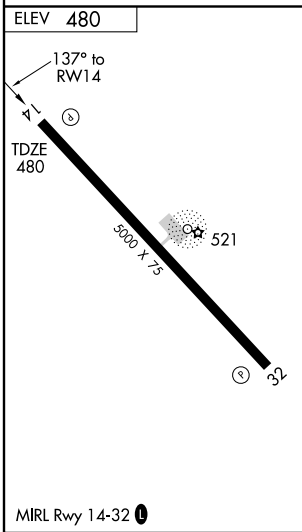
⚠ NA MISSED APPROACH: Climb to 2200 direct GUDRE and hold.

PHILADELPHIA AWOS-3 118.725	MEMPHIS CENTER 132.75 263.0	CTAF 122.9
---------------------------------------	---------------------------------------	----------------------



SC-4, 22 OCT 2009 to 19 NOV 2009

SC-4, 22 OCT 2009 to 19 NOV 2009



CATEGORY	A	B	C	D
LNAV MDA	1000-1	520 (600-1)	1000-1½ 520 (600-1½)	NA
CIRCLING	1020-1	540 (600-1)	1020-1½ 540 (600-1½)	NA