

RNAV (GPS) RWY 18

FORT SCOTT MUNI (F'SK)

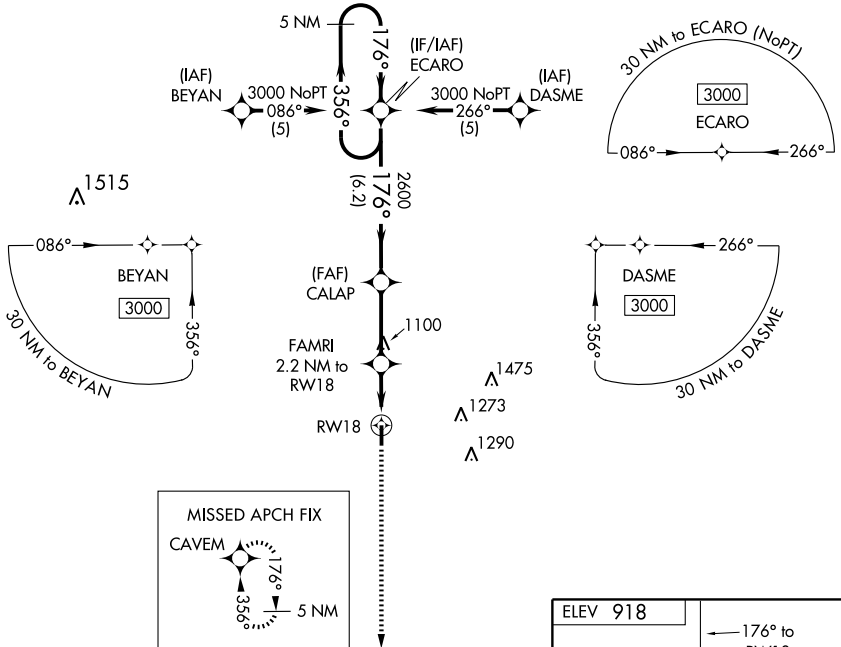
WAAS CH 50404 W18A	APP CRS 176°	Rwy Idg TDZE Apt Elev	4403 914 918
---------------------------------	------------------------	-----------------------------	---

▽ If local altimeter setting not received, use Chanute altimeter setting and increase all DAs 93 feet and all MDAs 100 feet. BARO-VNAV NA when using Chanute altimeter setting. For uncompensated BARO-VNAV systems, LNAV/VNAV NA below -16°C (4°F) or above 47°C (116°F). DME/DME RNP-0.3 NA. Visibility reduction by helicopters NA.

△ NA

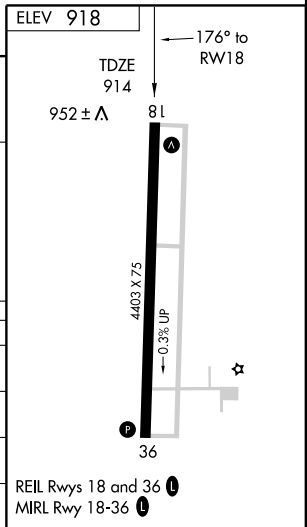
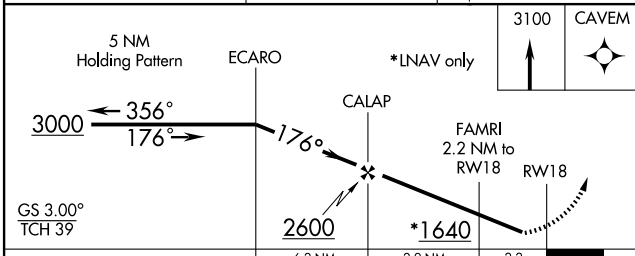
MISSED APPROACH: Climb to 3100 direct CAVEM and hold.

AWOS-3 124.425	KANSAS CITY CENTER 125.55 327.0	UNICOM 122.8 (CTAF)
--------------------------	---	-------------------------------



NC-2, 22 OCT 2009 to 19 NOV 2009

NC-2, 22 OCT 2009 to 19 NOV 2009



CATEGORY	A	B	C	D
LPV DA		1164-1	250 (300-1)	
LNAV/VNAV DA		1212-1	298 (300-1)	
LNAV MDA		1220-1	306 (400-1)	
CIRCLING	1280-1 362 (400-1)	1380-1 462 (500-1)	1380-1½ 462 (500-1½)	1480-2 562 (600-2)