

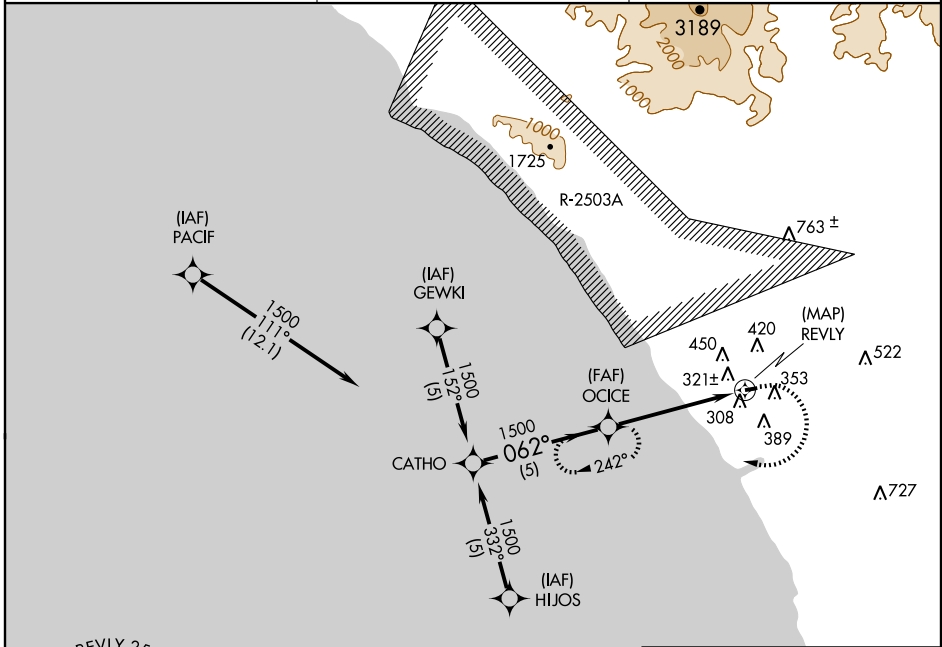
GPS RWY 6

OCEANSIDE MUNI (OKB)

APP CRS 062°	Rwy Idg 2712
	TDZE 28
	Apt Elev 28

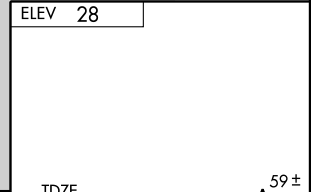
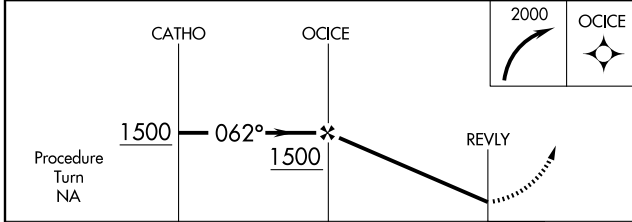
NA MISSED APPROACH: Climbing right turn to 2000 direct OCICE WP and hold.

ASOS 127.8	SOCAL APP CON 127.3 323.0	UNICOM 123.0 (CTAF) 0
----------------------	-------------------------------------	---------------------------------



SW-3, 22 OCT 2009 to 19 NOV 2009

SW-3, 22 OCT 2009 to 19 NOV 2009



	5 NM		5.1 NM	
CATEGORY	A	B	C	D
S-6	720-1	692 (700-1)	NA	NA
CIRCLING	880-1 852 (900-1)	880-1¼ 852 (900-1¼)	NA	NA