

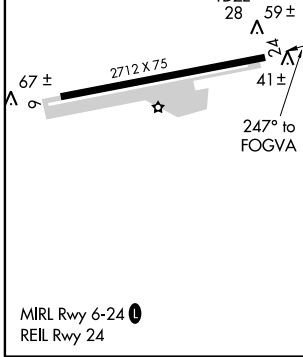
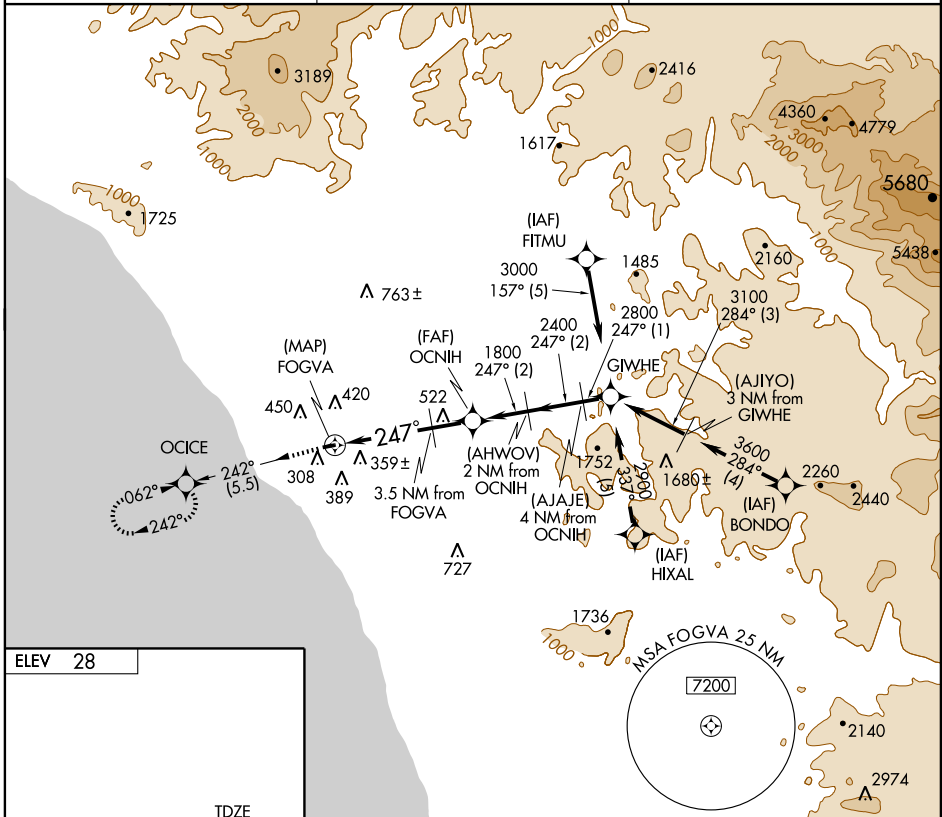
GPS RWY 24

OCEANSIDE MUNI (OKB)

APP CRS 247°	Rwy Idg 2712
	TDZE 28
	Apt Elev 28

<p>▼ ▲ NA</p>	<p>MISSED APPROACH: Climb to 2000 via 242° course to OCICE WP and hold.</p>
-------------------	---

<p>ASOS 127.8</p>	<p>SOCAL APP CON 127.3 323.0</p>	<p>UNICOM 123.0 (CTAF) 0</p>
------------------------------	---	---



ELEV 28	2000	OCICE	(AHWOV) 2 NM from OCNIH	(AJAJE) 4 NM from OCNIH	GJWHE
TDZE 28	242°	▲ 59 ±	3.5 NM from FOGVA	2800	2900
▲ 67 ±		▲ 41 ±	FOGVA	2400	Procedure Turn NA
2712 X 75		247° to FOGVA	1200	1800	
			3.5 NM	1.5 NM	2 NM
				2 NM	1 NM
MIRL Rwy 6-24 0	CATEGORY	A	B	C	D
REIL Rwy 24	S-24	740-1 712 (800-1)			NA
	CIRCLING	880-1	880-1¼	NA	
		852 (900-1)		852 (900-1¼)	

SW-3, 22 OCT 2009 to 19 NOV 2009

SW-3, 22 OCT 2009 to 19 NOV 2009