

BLUFFTON, OHIO

AL-5665 (FAA)

RNAV (GPS) RWY 23

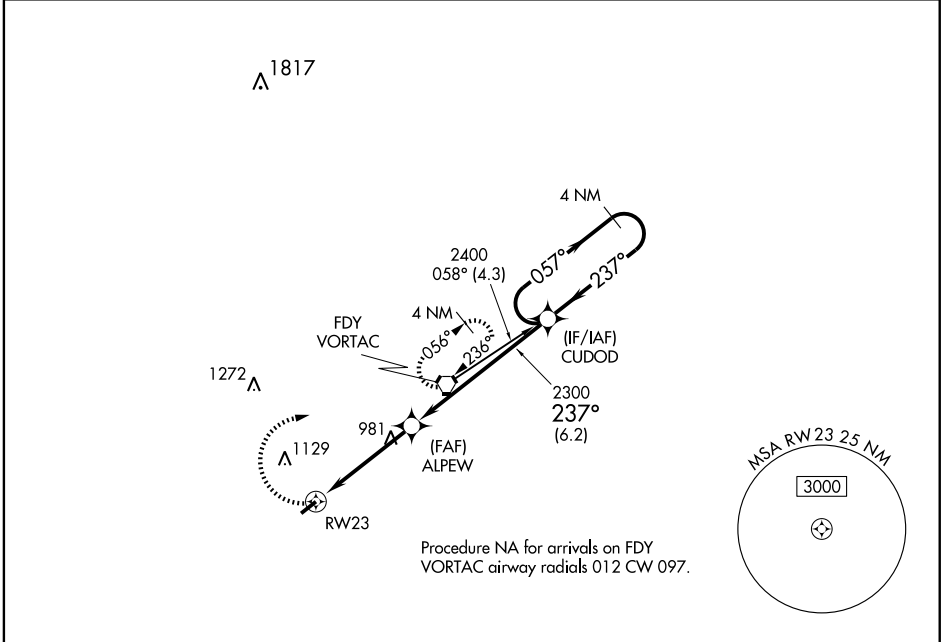
BLUFFTON (5G7)

APP CRS 237°	Rwy Idg 4126 TDZE 850 Apt Elev 851
------------------------	---

▽ DME/DME RNP-0.3 NA. Visibility reduction by helicopters NA. Use Findlay altimeter setting; when not received use Lima Allen County altimeter setting and increase all MDA 20 feet and Circling Cat D visibility ¼ mile.

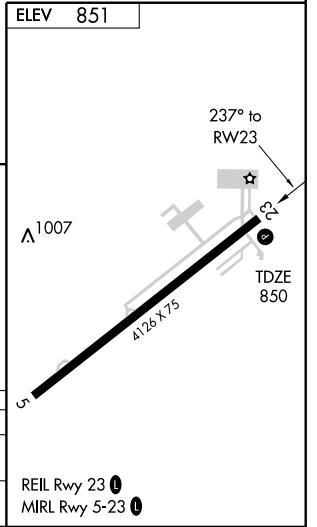
△ NA MISSED APPROACH: Climbing right turn to 2500 direct FDY VORTAC and hold.

FINDLAY ASOS 124.425	TOLEDO APP CON 120.8 317.55	UNICOM 122.8 (CTAF) 0
--------------------------------	---------------------------------------	---------------------------------



EC-2, 22 OCT 2009 to 19 NOV 2009

EC-2, 22 OCT 2009 to 19 NOV 2009



5000	FDY				
		ALPEW	CUDOD	4 NM Holding Pattern	
		2300	2400	057° →	
				← 237°	
		4.4 NM	6.2 NM		

CATEGORY	A	B	C	D
RNAV MDA	1280-1	430 (500-1)	1280-1 ¼ 430 (500-1 ¼)	1280-1 ½ 430 (500-1 ½)
CIRCLING	1340-1	489 (500-1)	1340-1 ½ 489 (500-1 ½)	1520-2 669 (700-2)

REIL Rwy 23 0
MIRL Rwy 5-23 0

BLUFFTON, OHIO
Orig 09183

40°53'N - 83°52'W

RNAV (GPS) RWY 23

BLUFFTON (5G7)