

WOOSTER, OHIO

AL-5663 (FAA)

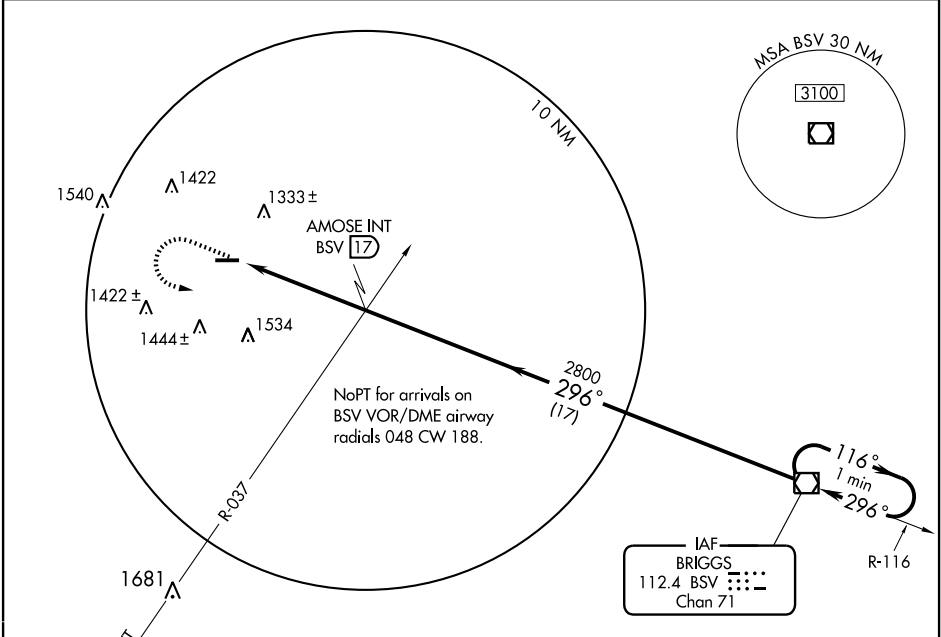
# VOR RWY 28

WOOSTER / WAYNE COUNTY (BJJ)

VOR/DME BSV <b>112.4</b> Chan <b>71</b>	APP CRS <b>296°</b>	Rwy Idg TDZE <b>1133</b> Apt Elev <b>1135</b>	<b>4973</b>
---	------------------------	---	-------------

MISSED APPROACH: Climb to 2800, then left turn direct BSV VOR/DME and hold.

ASOS <b>118.075</b>	AKRON-CANTON APP CON * <b>118.6 323.0</b>	CLNC DEL <b>121.75</b>	UNICOM <b>122.8</b> (CTAF) <b>0</b>
------------------------	--	---------------------------	--

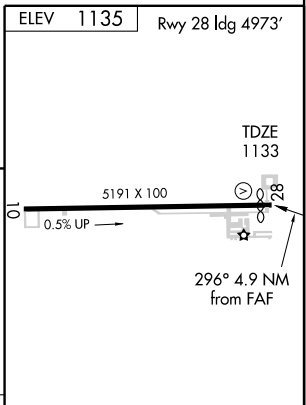
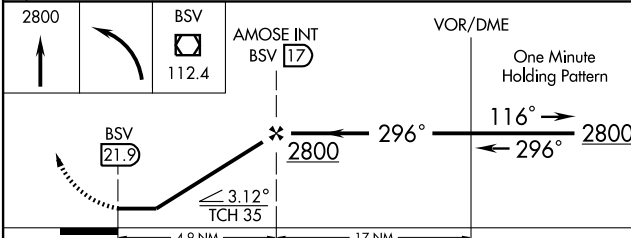


IAF  
BRIGGS  
112.4 BSV  
Chan 71

EC-2, 22 OCT 2009 to 19 NOV 2009

EC-2, 22 OCT 2009 to 19 NOV 2009

ELEV <b>1135</b>	Rwy 28 Idg 4973'
------------------	------------------



CATEGORY	A	B	C	D
S-28	1660-1 527 (600-1)	1660-1¼ 527 (600-1¼)	1660-1½ 527 (600-1½)	1660-1¾ 527 (600-1¾)
CIRCLING	1660-1 525 (600-1)	1660-1¼ 525 (600-1¼)	1660-1½ 525 (600-1½)	1700-2 565 (600-2)

REIL Rwy 10 and 28 **0**  
HIRL Rwy 10-28 **0**

FAF to MAP 4.9 NM

Knots	60	90	120	150	180
Min:Sec	4:54	3:16	2:27	1:58	1:38

WOOSTER, OHIO  
Orig-C 06047

40°52'N - 81°53'W

WOOSTER / WAYNE COUNTY (BJJ)  
**VOR RWY 28**