

CENTERVILLE, TENNESSEE

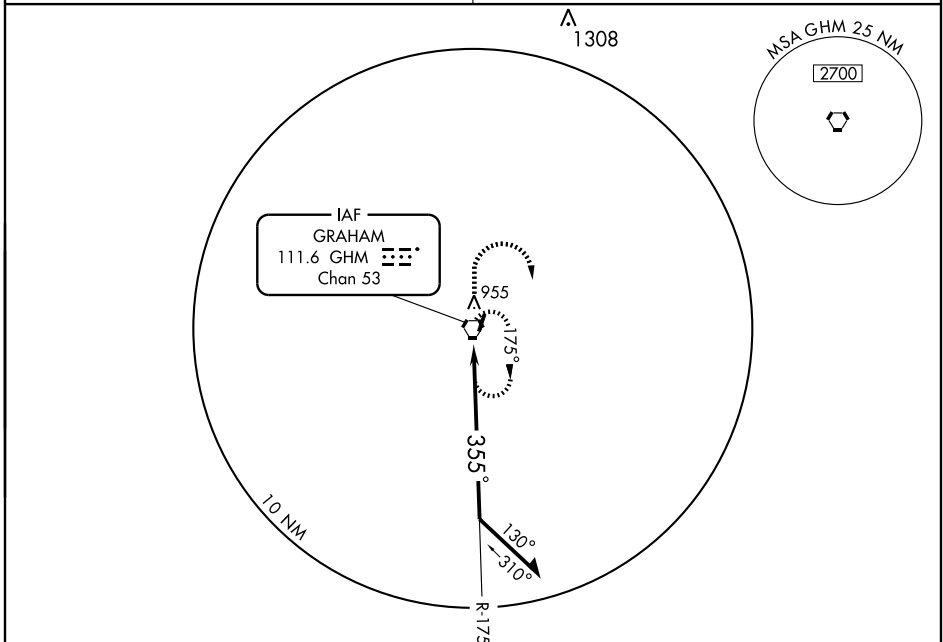
AL-5660 (FAA)

| | | |
|--|------------------------|---|
| VORTAC GHM 111.6 Chan 53 | APP CRS 355° | Rwy Idg 4002 TDZE 768 Apt Elev 768 |
|--|------------------------|---|

VOR RWY 2

CENTERVILLE MUNI (GHM)

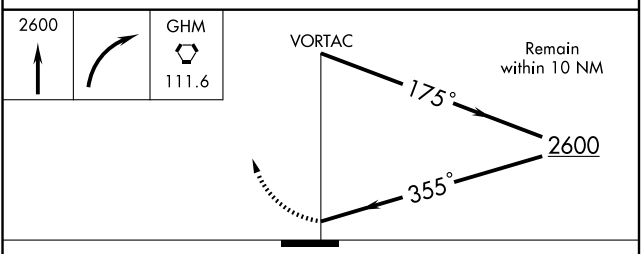
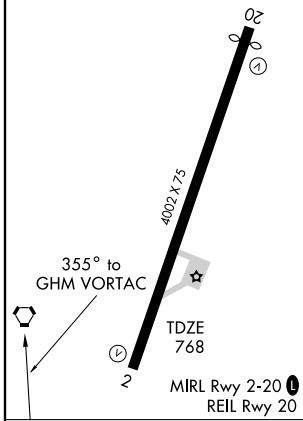
| | |
|---|---|
| <p>▼ Obtain local altimeter on CTAF, if not received</p> <p>▲ NA use Nashville altimeter setting.</p> | <p>MISSED APPROACH: Climb to 2600 then right turn direct GHM VORTAC and hold.</p> |
| <p>MEMPHIS CENTER 125.85 381.4</p> | <p>UNICOM 122.8 (CTAF) L</p> |



SE-1, 22 OCT 2009 to 19 NOV 2009

SE-1, 22 OCT 2009 to 19 NOV 2009

| | |
|----------|------------------|
| ELEV 768 | Rwy 20 Idg 3752' |
|----------|------------------|



| CATEGORY | A | B | C | D |
|--------------------------------------|--------|-------------|-------------------------|-------------------------|
| S-2 | 1240-1 | 472 (500-1) | 1240-1½ 472 (500-1½) | 1240-1½ 472 (500-1½) |
| CIRCLING | 1240-1 | 472 (500-1) | 1240-1½ 472 (500-1½) | 1320-2 552 (600-2) |
| NASHVILLE ALTIMETER SETTING MINIMUMS | | | | |
| S-2 | 1440-1 | 672 (700-1) | 1440-2 672 (700-2) | 1440-2¼ 672 (700-2¼) |
| CIRCLING | 1440-1 | 672 (700-1) | 1440-2 672 (700-2) | 1440-2¼ 672 (700-2¼) |

| | | | | | |
|---------|----|----|-----|-----|-----|
| Knots | 60 | 90 | 120 | 150 | 180 |
| Min:Sec | | | | | |

CENTERVILLE, TENNESSEE
Amdt 6 05020

35° 50' N - 87° 27' W

CENTERVILLE MUNI (GHM)
VOR RWY 2