

ALTUS, OKLAHOMA

AL-5659 (FAA)

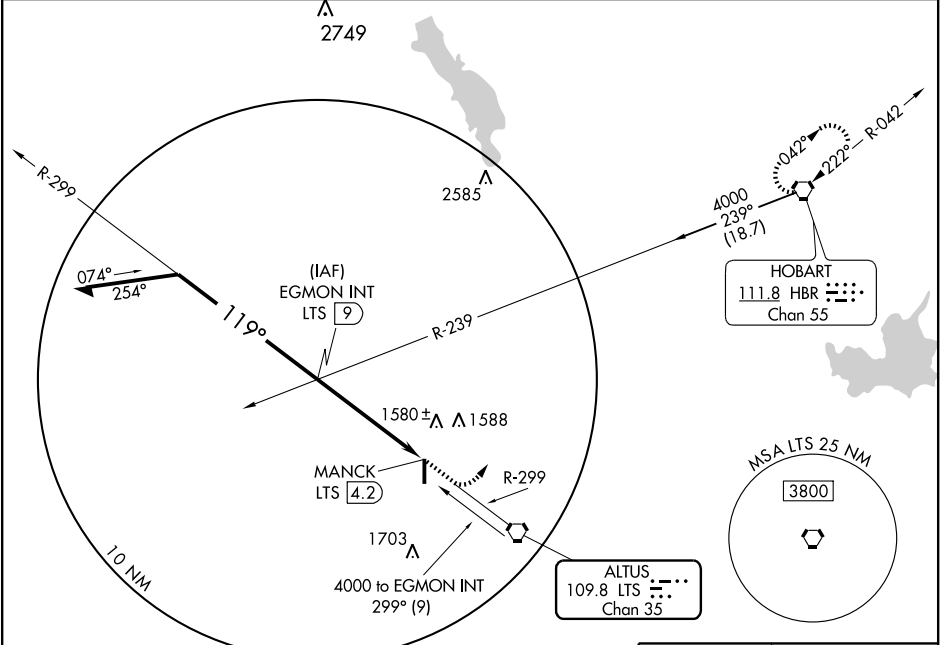
VOR-B

ALTUS/QUARTZ MOUNTAIN RGNL (A.X.S)

VORTAC LTS 109.8 Chan 35	APP CRS 119°	Rwy Idg TDZE Apt Elev N/A N/A 1433
--	------------------------	--

▼ When local altimeter setting not received, use Hobart altimeter setting and increase MDA 80 feet.
▲ MISSED APPROACH: Climb to 2500 then climbing left turn to 4000 direct HBR VORTAC and hold.

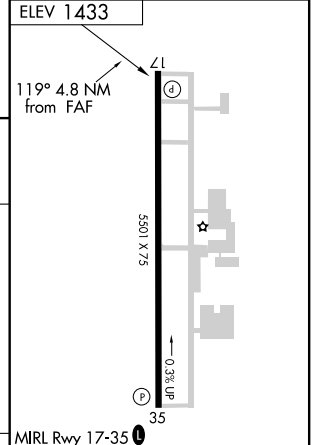
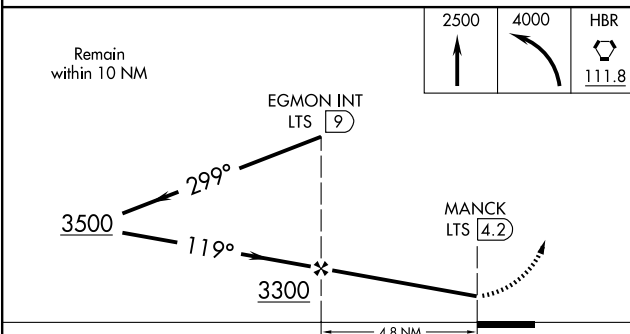
AWOS-3 118.825	ALTUS APP CON* 125.1 259.3	UNICOM 122.8 (CTAF) 0
--------------------------	--------------------------------------	---------------------------------



SC-1, 22 OCT 2009 to 19 NOV 2009

SC-1, 22 OCT 2009 to 19 NOV 2009

ELEV 1433	119° 4.8 NM from FAF	2500	4000	HBR
		↑	↶	111.8



CATEGORY	A	B	C	D	FAF to MAP 4.8 NM						
CIRCLING	1940-1	507 (600-1)	1940-1½	507 (600-1½)	NA	Knots	60	90	120	150	180
						Min:Sec	4:48	3:12	2:24	1:55	1:36

ALTUS, OKLAHOMA
Amdt 1 09267

34°42'N - 99°20'W

ALTUS/QUARTZ MOUNTAIN RGNL (A.X.S)

VOR-B