

ALTUS, OKLAHOMA

AL-5659 (FAA)

VOR-A

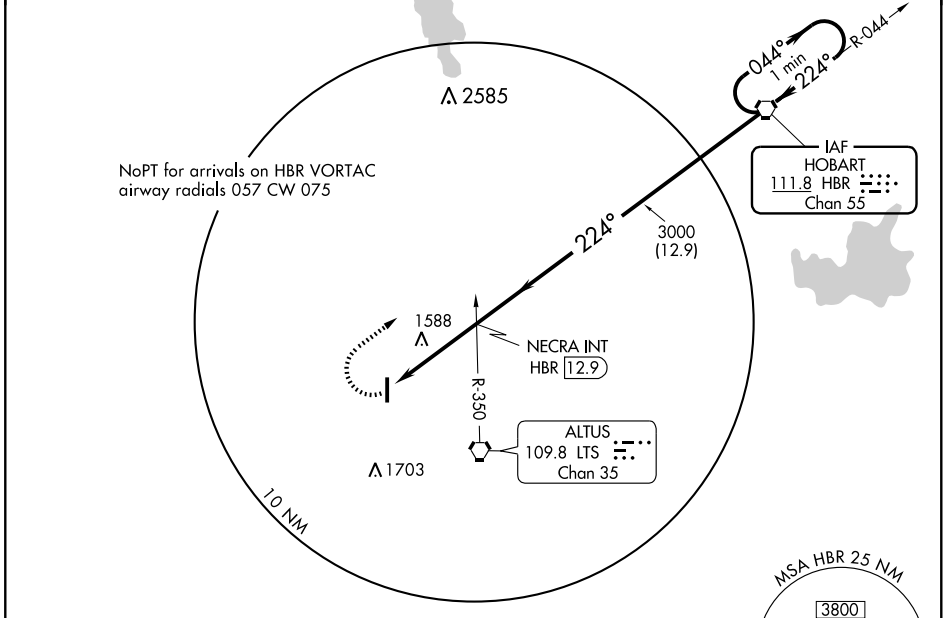
ALTUS/QUARTZ MOUNTAIN RGNL (A.XS)

VORTAC HBR <b>111.8</b> Chan <b>55</b>	APP CRS <b>224°</b>	Rwy Idg TDZE Apt Elev <b>1433</b>	<b>N/A</b> <b>N/A</b>
--	------------------------	---	--------------------------

**⚠** When local altimeter setting not received use Hobart altimeter setting.

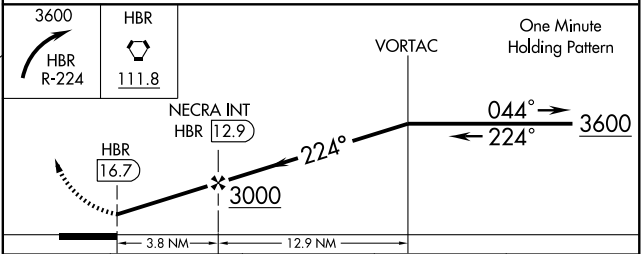
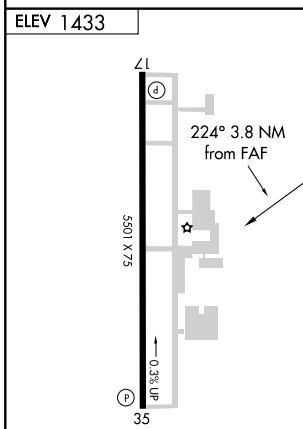
**⚠** MISSED APPROACH: Climbing right turn to 3600 via HBR R-224 to HBR VORTAC and hold.

AWOS-3 <b>118.825</b>	ALTUS APP CON* <b>125.1 259.3</b>	UNICOM <b>122.8 (CTAF)</b>
--------------------------	--------------------------------------	-------------------------------



SC-1, 22 OCT 2009 to 19 NOV 2009

SC-1, 22 OCT 2009 to 19 NOV 2009



MIRL Rwy 17-35

FAF to MAP 3.8 NM					
Knots	60	90	120	150	180
Min:Sec	3:48	2:32	1:54	1:31	1:16

CATEGORY	A	B	C	D
CIRCLING	1940-1	507 (600-1)	1940-1½ 507 (600-1½)	NA
HOBART MUNI ALTIMETER SETTING MINIMUMS				
CIRCLING	2020-1	587 (600-1)	2020-1½ 587 (600-1½)	NA

ALTUS, OKLAHOMA  
Amdt 4D 09267

34°42'N - 99°20'W

ALTUS/QUARTZ MOUNTAIN RGNL (A.XS)

VOR-A