

RNAV (GPS) RWY 3

TALLADEGA MUNI (ASN)

WAAS CH 61008 W03A	APP CRS 035°	Rwy Idg TDZE Apt Elev	6001 511 529
--	------------------------	-----------------------------	---

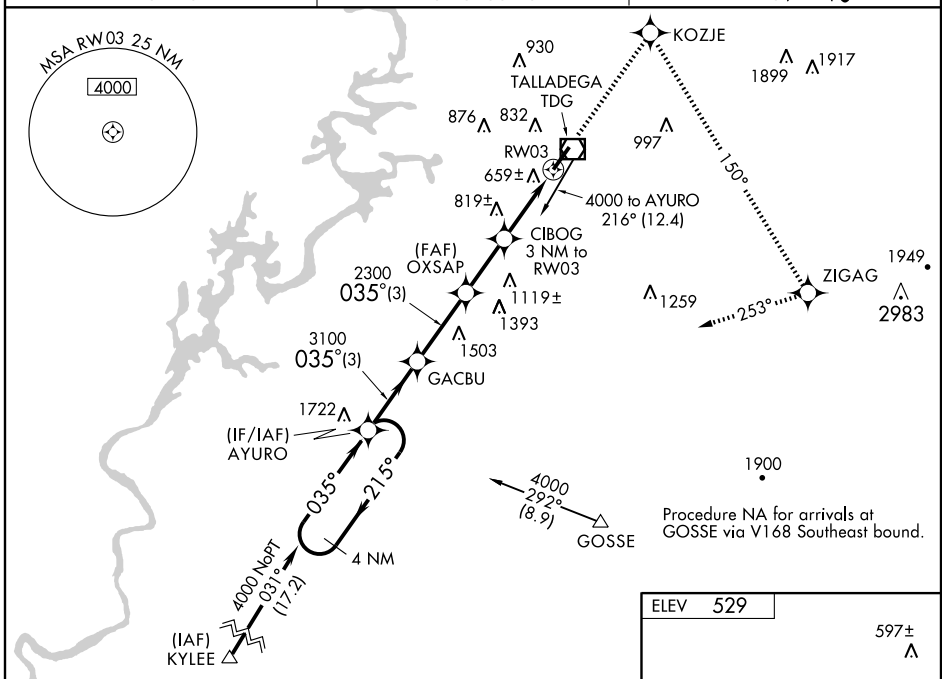
Baro-VNAV NA when using Anniston altimeter setting. For uncompensated Baro-VNAV systems, LNAV/VNAV NA below -16°C (4°F) or above 48°C (118°F). DME/DME RNP-0.3 NA. Visibility reduction by helicopters NA. When local altimeter setting not received, use Anniston altimeter setting and increase LPV DA to 902, LNAV/VNAV DA to 1002, and all MDA 40 feet; Increase LNAV/VNAV visibility all Cats., LNAV Cats. C/D visibility, and circling Cat. C visibility ¼ mile.

MISSED APPROACH: Climb to 4000 direct KOZJE and right turn via 150° track to ZIGAG and right turn via 253° track to AYURO and hold.

AWOS-3
118.425

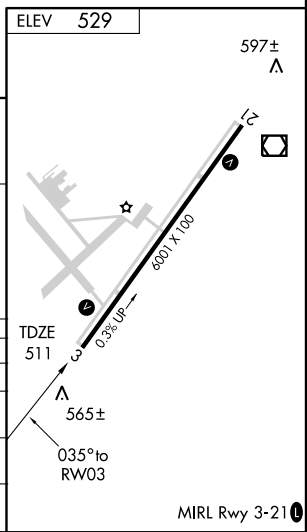
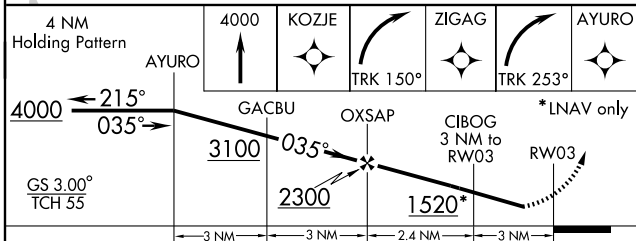
BIRMINGHAM APP CON
125.45 381.5

UNICOM
122.8 (CTAF)



SE-4, 22 OCT 2009 to 19 NOV 2009

SE-4, 22 OCT 2009 to 19 NOV 2009



CATEGORY	A	B	C	D
LPV DA		868-1¼	357 (400-1¼)	
LNAV/VNAV DA		968-1½	457 (500-1½)	
LNAV MDA	1080-1	569 (600-1)	1080-1½ 569 (600-1½)	1080-1¾ 569 (600-1¾)
CIRCLING	1160-1 631 (700-1)	1180-1 651 (700-1)	1180-1¾ 651 (700-1¾)	1200-2¼ 671 (700-2¼)