

# RNAV (GPS) RWY 21

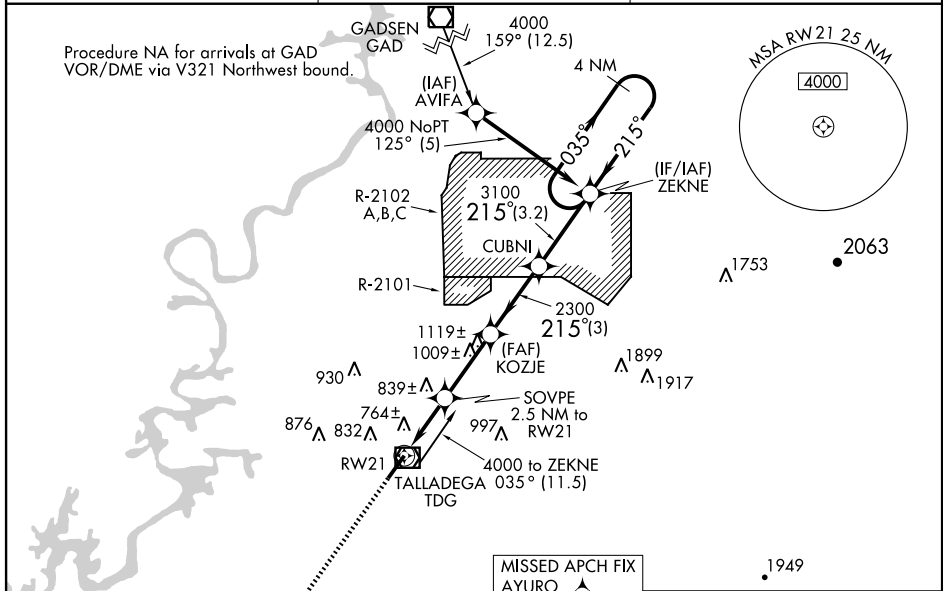
TALLADEGA MUNI (ASN)

WAAS CH 45608 W21A	APP CRS 215°	Rwy Idg 6001
		TDZE 529
		Apt Elev 529

**⚠** Baro-VNAV NA when using Anniston altimeter setting. For uncompensated Baro-VNAV systems, LNAV/VNAV NA below -16°C (4°F) or above 48°C (118°F). DME/DME RNP-0.3 NA. Visibility reduction by helicopters NA. When local altimeter setting not received, use Anniston altimeter setting and increase LPV DA to 922, LNAV/VNAV DA to 1179, and all MDA 40 feet; increase LPV visibility all Cats., LNAV Cats. C/D visibility, and circling Cat. C visibility ¼ mile.

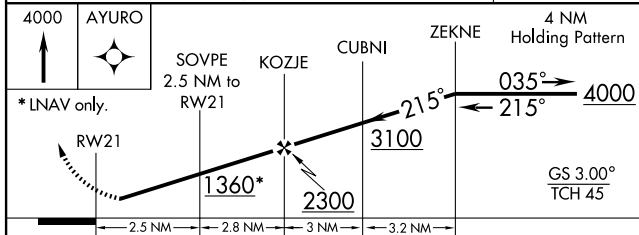
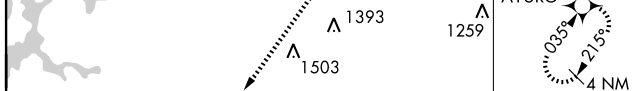
**MISSED APPROACH:**  
Climb to 4000 direct AYURO and hold, continue climb-in-hold to 4000.

AWOS-3 <b>118.425</b>	BIRMINGHAM APP CON <b>125.45 381.5</b>	UNICOM <b>122.8 (CTAF) 0</b>
--------------------------	---	---------------------------------



SE-4, 22 OCT 2009 to 19 NOV 2009

SE-4, 22 OCT 2009 to 19 NOV 2009



CATEGORY	A	B	C	D
LPV DA	888-1¼		359 (400-1¼)	
LNAV/VNAV DA	1145-2¼		616 (700-2¼)	
LNAV MDA	1100-1	571 (600-1)	1100-1½	571 (600-1½)
			1100-1¾	571 (600-1¾)
CIRCLING	1160-1	1180-1	1180-1¾	1200-2¼
	631 (700-1)	651 (700-1)	651 (700-1¾)	671 (700-2¼)

