

RNAV (GPS) RWY 36

ABERDEEN/MONROE COUNTY (M40)

WAAS CH 70414 W36A	APP CRS 005°	Rwy Idg 4999 TDZE 226 Apt Elev 226
--	------------------------	---

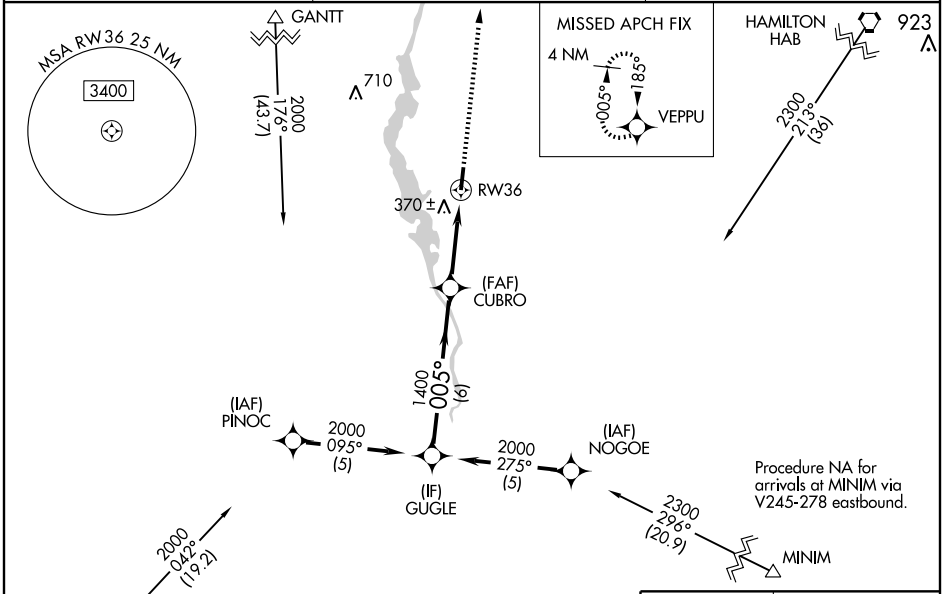
▼ Baro-VNAV NA when using Golden Triangle Rgnl altimeter setting.
 For uncompensated Baro-VNAV systems, LNAV/VNAV NA below -15°C (5°F) or above 47°C (116°F).
▲ NA DME/DME RNP-0.3 NA. Visibility reduction by helicopters NA.
 VDP NA when using Golden Triangle Rgnl altimeter setting.
 When local altimeter setting not received, use Golden Triangle Rgnl altimeter setting and increase all DA 65 feet and all MDA 80 feet, increase LPV and LNAV/VNAV visibility all Cats ¼, and increase LNAV visibility Cat C and D ¼.

MISSED APPROACH: Climb to 2000 direct VEPPU and hold.

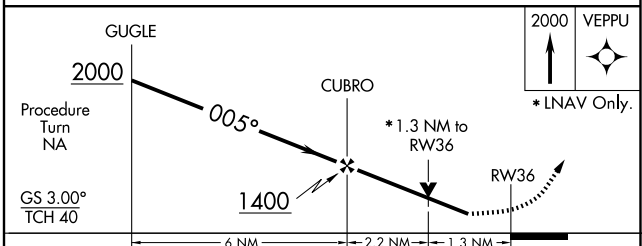
AWOS-3
118.475

COLUMBUS APP CON ★
126.075 239.25

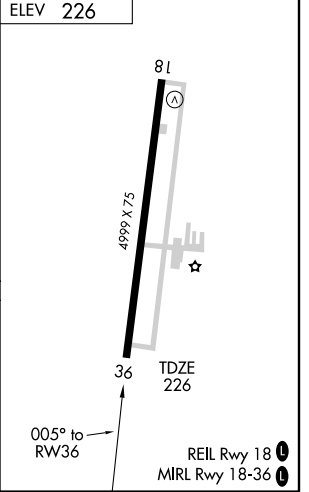
UNICOM
122.8 (CTAF)



ELEV 226



CATEGORY	A	B	C	D
LPV DA	559-1¼		333 (400-1¼)	
LNAV/VNAV DA	715-1¾		489 (500-1¾)	
LNAV MDA	680-1	454 (500-1)	680-1¼	680-1½
			454 (500-1¼)	454 (500-1½)
CIRCLING	720-1	494 (500-1)	720-1½	780-2
			494 (500-1½)	554 (600-2)



SC-4, 22 OCT 2009 to 19 NOV 2009

SC-4, 22 OCT 2009 to 19 NOV 2009