


RNAV (GPS) RWY 26

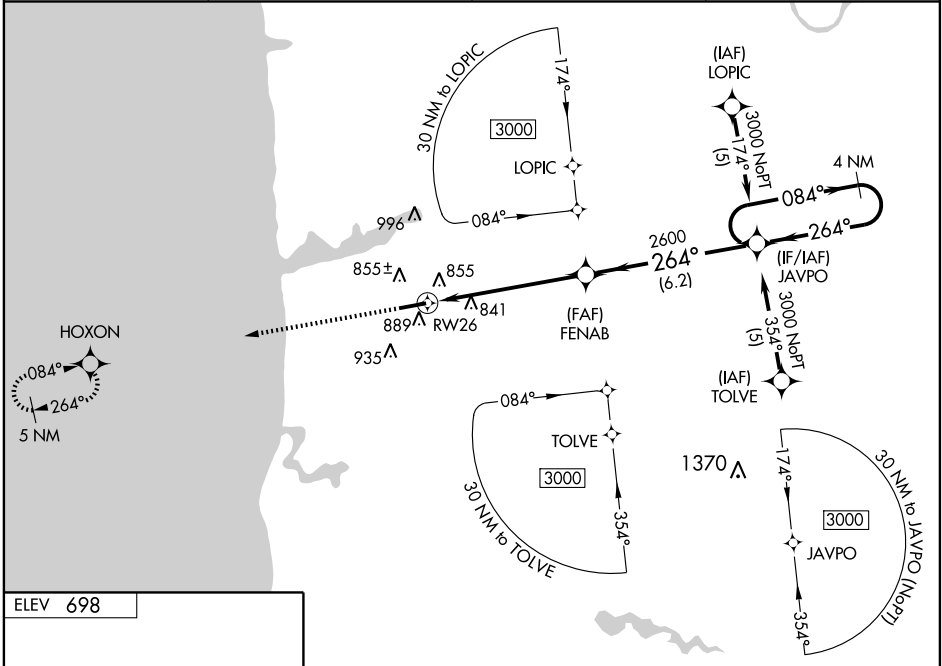
HOLLAND/ TULIP CITY (BIV)

WAAS CH 53402 W26A	APP CRS 264°	Rwy Idg TDZE Apt Elev	6002 686 698
----------------------------------------	------------------------	-----------------------------	-----------------------------------------

▼ For inoperative MALSRS, increase LPV all Cts visibility to 1. For uncompensated Baro-VNAV systems, LNAV/VNAV NA below -16°C (4°F) or above 54°C (130°F). DME/DME RNP-0.3 NA. VDP and Baro-VNAV NA when using Muskegon altimeter setting. When local altimeter setting not received, use Muskegon altimeter setting and increase all DA 71 feet and all MDA 80 feet; increase all LPV, LNAV-VNAV and LNAV Cat C visibility ¼ mile. For inoperative MALSRS, when using Muskegon altimeter setting, increase LPV all Cts visibility to 1¼.

MALSRS
 MISSED APPROACH:
 Climb to 2700 direct HOXON and hold.

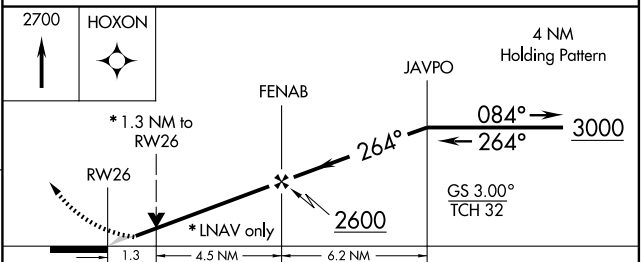
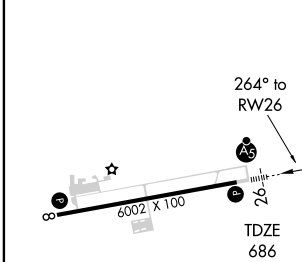
ASOS 119.025	MUSKEGON APP CON * 119.8 339.1	MUSKEGON CLNC DEL 123.95	UNICOM 123.05 (CTAF) 
------------------------	------------------------------------------	------------------------------------	------------------------------------------------------------------------------------------------------------------




EC-1, 22 OCT 2009 to 19 NOV 2009

EC-1, 22 OCT 2009 to 19 NOV 2009

ELEV 698



CATEGORY	A	B	C	D
LPV DA	951-½	265 (300-½)		NA
LNAV/VNAV DA	1175-1¼ 489 (500-1¼)			NA
LNAV MDA	1140-½	454 (500-½)	1140-¾ 454 (500-¾)	NA
CIRCLING	1200-1	502 (600-1)	1200-1½ 502 (600-1½)	NA

REIL Rwy 8 and 26 
 HIRL Rwy 8-26 