

ILS or LOC/DME RWY 26

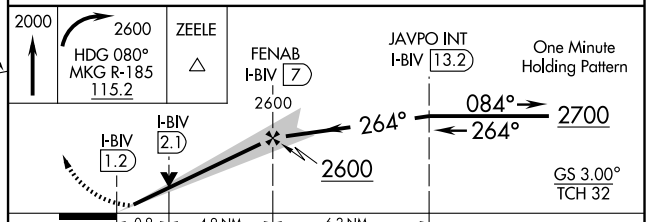
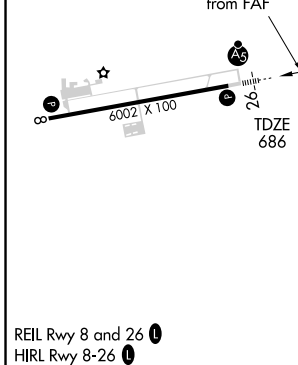
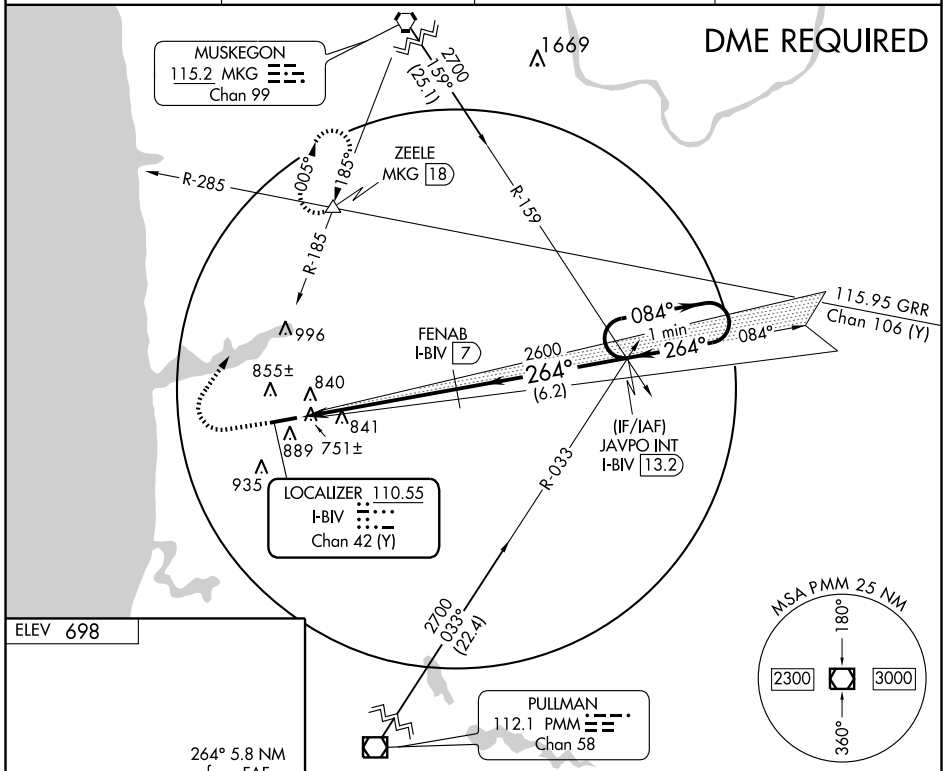
HOLLAND/ TULIP CITY (BIV)

LOC/DME I-BIV 110.55 Chan 42 (Y)	APP CRS 264°	Rwy Idg 6002 TDZE 686 Apt Elev 698
--	------------------------	---

NA For inoperative MALSR, increase all S-ILS 26 visibility to 1. When local altimeter setting not received, use Muskegon altimeter setting and increase all DA 71 feet, all MDA 80 feet and S-ILS 26 Cats visibility 1/4 mile, and S-LOC 26 Cat C visibility 1/4 mile. For inoperative MALSR when using Muskegon altimeter setting, increase S-ILS 26 all Cats visibility to 1/4. VDP NA when using Muskegon altimeter setting.

MALSR
MISSED APPROACH: Climb to 2000 then climbing right turn to 2600 via heading 080° and MKG R-185 to ZEELE INT/ MKG 18 DME and hold.

ASOS 119.025	MUSKEGON APP CON* 119.8 339.1	MUSKEGON CLNC DEL 123.95	UNICOM 123.05 (CTAF)
------------------------	---	------------------------------------	--------------------------------



CATEGORY	A	B	C	D
S-ILS 26		936-1/2	250 (300-1/2)	NA
S-LOC 26		1020-1/2	334 (400-1/2)	NA
CIRCLING	1200-1	502 (600-1)	1200-1 1/2 502 (600-1 1/2)	NA

EC-1, 22 OCT 2009 to 19 NOV 2009

EC-1, 22 OCT 2009 to 19 NOV 2009