

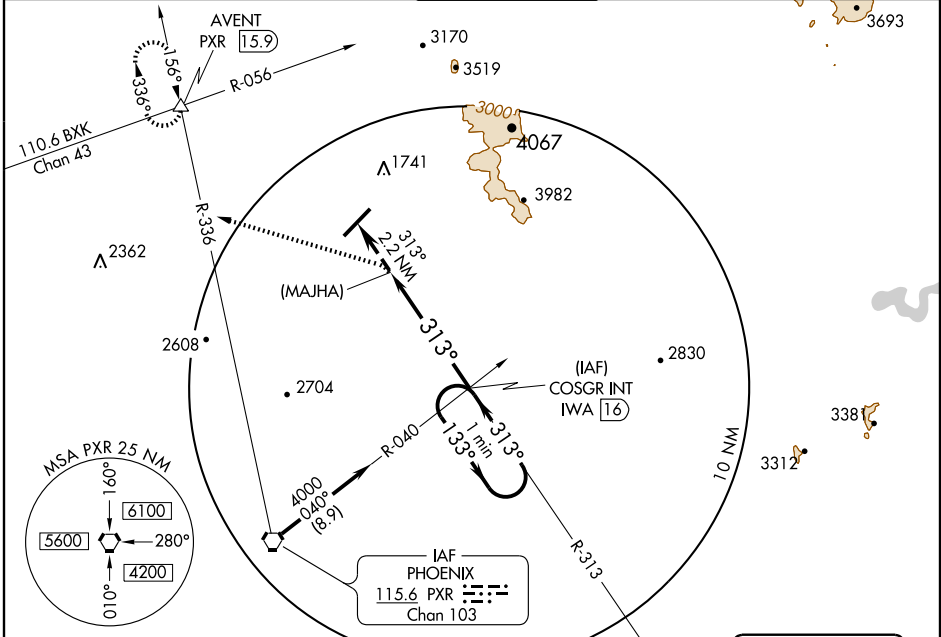
VOR or GPS-C
SCOTTSDALE (SDL)

VORTAC IWA 113.3 Chan 80	APP CRS 313°	Rwy Idg TDZE Apt Elev 1508	N/A N/A 1508
--	------------------------	---	---------------------------

⚠ When local altimeter setting not received, use Phoenix Sky Harbor altimeter setting minimums.

MISSED APPROACH: Climbing left turn to 7000 via heading 280° and PXR R-336 outbound, reaching 7000, continue direct AVENT Int/PXR 15.9 DME and hold.

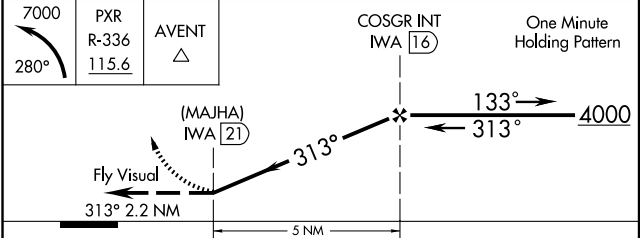
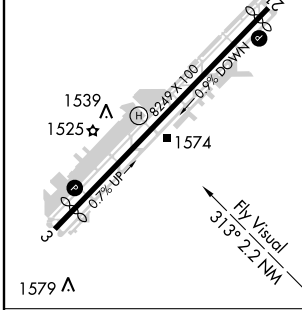
ATIS 118.6	PHOENIX APP CON 120.7 239.0	SCOTTSDALE TOWER* 119.9 (CTAF) 0	GND CON 121.6	CLNC DEL 124.8
----------------------	---------------------------------------	--	-------------------------	--------------------------



ELEV 1508

MIRL Rwy 3-21 **Ⓛ**

REIL Rwy 3 and 21 **Ⓛ**



CATEGORY	A	B	C	D
CIRCLING	2400-2½	892 (900-2½)	2400-2¾	892 (900-2¾)
PHOENIX SKY HARBOR ALTIMETER SETTING MINIMUMS				
CIRCLING	2480-2½	972 (1000-2½)	2480-3	972 (1000-3)

SW-4, 22 OCT 2009 to 19 NOV 2009

SW-4, 22 OCT 2009 to 19 NOV 2009