

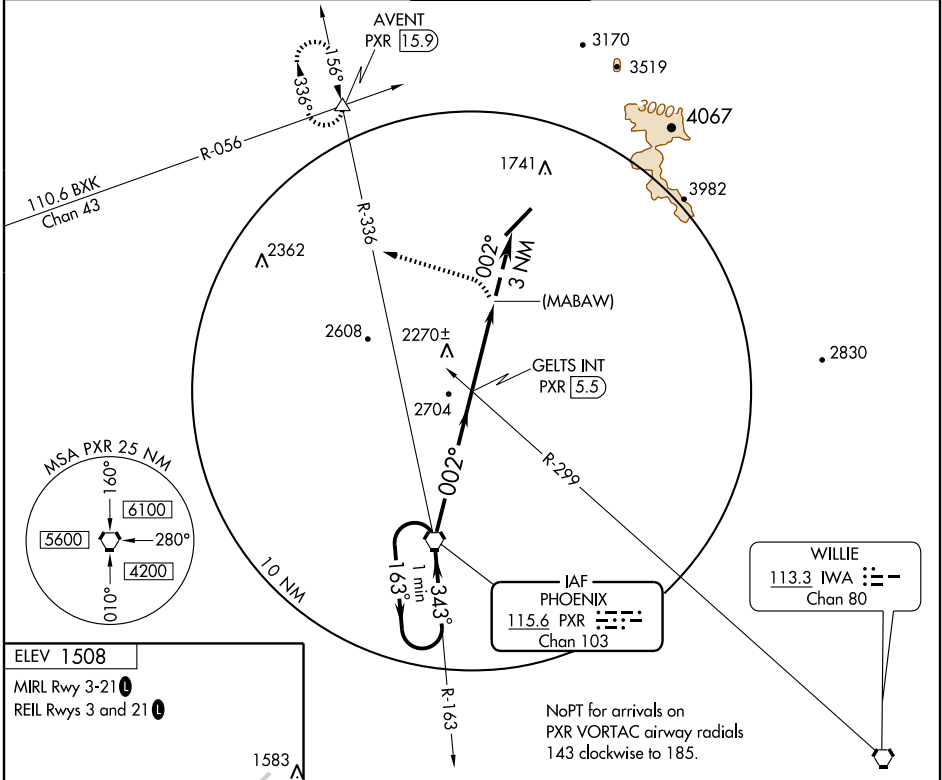
# VOR or GPS-A SCOTTSDALE (SDL)

VORTAC PXR <b>115.6</b> Chan <b>103</b>	APP CRS <b>002°</b>	Rwy Idg TDZE Apt Elev <b>1508</b>	<b>N/A</b> <b>N/A</b>
---	------------------------	--	--------------------------

**⚠** When local altimeter setting not received, use Phoenix Sky Harbor altimeter setting minimums.

**⚠** MISSED APPROACH: Climbing left turn to 7000 via heading 280° and PXR R-336 Northwest bound; then continue direct AVENT Int/PXR 15.9 DME and hold.

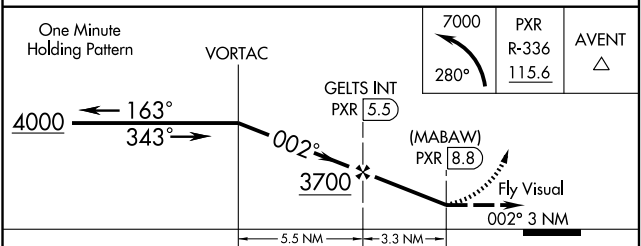
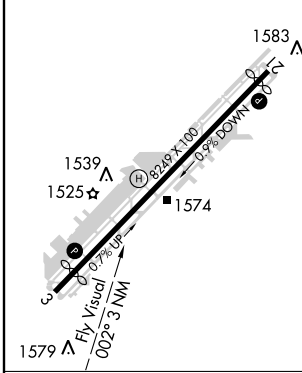
ATIS <b>118.6</b>	PHOENIX APP CON <b>120.7 239.0</b>	SCOTTSDALE TOWER* <b>119.9 (CTAF) 0</b>	GND CON <b>121.6</b>	CLNC DEL <b>124.8</b>
----------------------	---------------------------------------	--	-------------------------	--------------------------



SW-4, 22 OCT 2009 to 19 NOV 2009

SW-4, 22 OCT 2009 to 19 NOV 2009

ELEV 1508
MIRL Rwy 3-21
REIL Rwy 3 and 21



CATEGORY	A	B	C	D
CIRCLING	2540-2½	1032 (1100-2½)	2540-3 1032 (1100-3)	NA
PHOENIX SKY HARBOR ALTIMETER SETTING MINIMUMS				
CIRCLING	2620-2½	1112 (1200-2½)	2620-3 1112 (1200-3)	NA