

RNAV (RNP) Y RWY 3

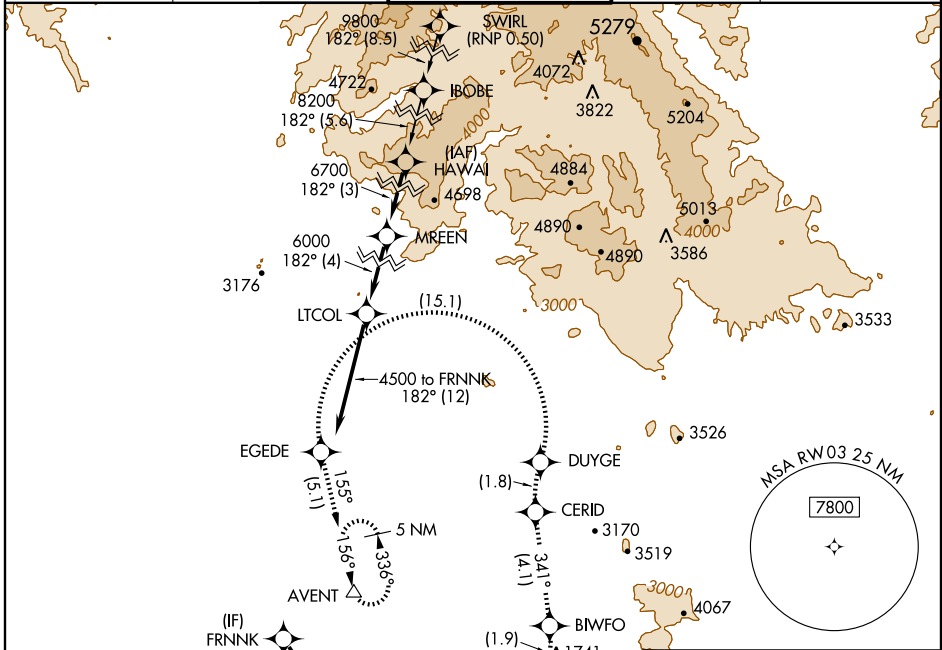
SCOTTSDALE (SDL)

APP CRS	Rwy Idg	7510
032°	TDZE	1470
	Apt Elev	1510

▼ RF and GPS required. Visibility reduction by helicopters NA. For uncompensated Baro-VNAV systems, procedure NA below 1°C (31°F) or above 54°C (130°F). When local altimeter setting not received procedure NA. Missed approach requires RNP less than 1.0.

MISSED APPROACH: Climb to 5000 via left turn to AXFUR, and via left turn to BIWFO, and via track 341° to CERID, and via right turn to DUYGE, and via left turn to EGEDE, and via track 155° to AVENT and hold.

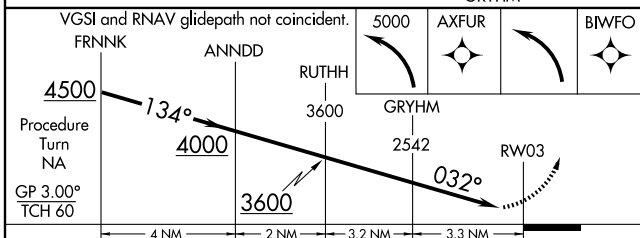
ATIS	PHOENIX APP CON	SCOTTSDALE TOWER *	GND CON	CLNC DEL
118.6	120.7 239.0	119.9 (CTAF) 0	121.6	124.8



SW-4, 22 OCT 2009 to 19 NOV 2009

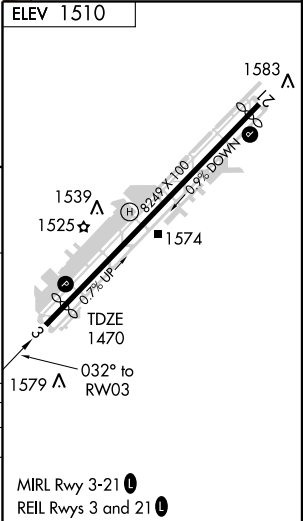
SW-4, 22 OCT 2009 to 19 NOV 2009

ELEV 1510	FRNKK	ANNDD	RUTHH	GRYHM	AXFUR	BIWFO
	(IF)	(FAF)				
	4000	3600	1505 ± Δ	1741	1741	1741
	134°	134° (2)	032°	341°	341°	341°
	(4)	(2)	(3.2)	(3.3)	(1.8)	(1.9)
	2362 Δ					



CATEGORY	A	B	C	D
RNP 0.30 DA	1829-1¼	359 (400-1¼)		NA

SPECIAL AIRCRAFT & AIRCREW AUTHORIZATION REQUIRED



MIRL Rwy 3-21 0
REIL Rwy 3 and 21 0