

RNAV (RNP) RWY 21

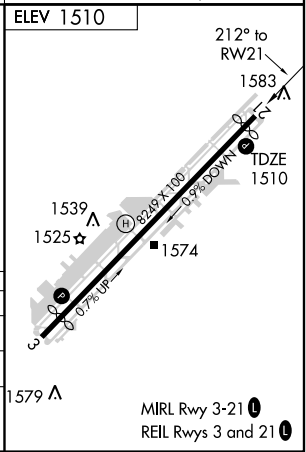
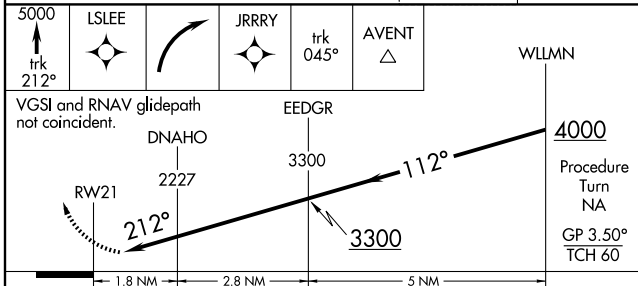
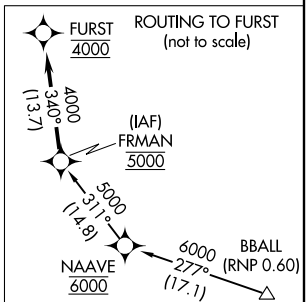
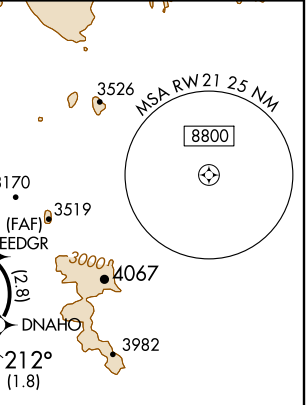
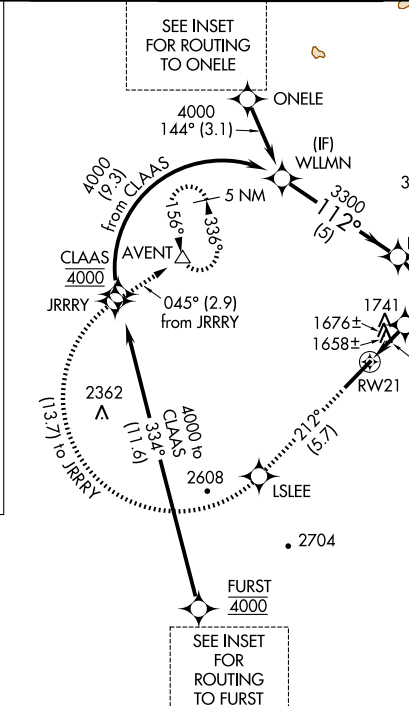
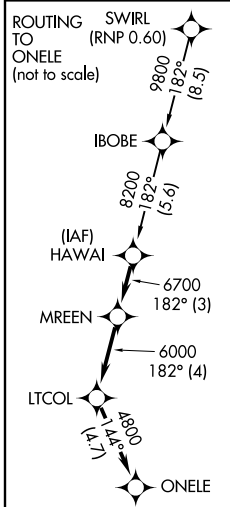
SCOTTSDALE (SDL)

APP CRS	Rwy Idg	7849
212°	TDZE	1510
	Apt Elev	1510

RF and GPS required. Visibility reduction by helicopters NA.
 For uncompensated Baro-VNAV systems, procedure NA below 1°C (31°F) or above 44°C (112°F).
 When local altimeter setting not received procedure NA.

MISSED APPROACH: Climb to 5000 via track 212° to LSLEE, and via right turn to JRRRY, and via track 045° to AVENT and hold.

ATIS 118.6	PHOENIX APP CON 120.7 239.0	SCOTTSDALE TOWER * 119.9(CTAF) 0	GND CON 121.6	CLNC DEL 124.8
----------------------	---------------------------------------	--	-------------------------	--------------------------



CATEGORY	A	B	C	D
RNP 0.10 DA	1948-1¼	438 (500-1¼)		NA
RNP 0.16 DA	1987-1½	477 (500-1½)		NA

SPECIAL AIRCRAFT & AIRCREW AUTHORIZATION REQUIRED

SW-4, 22 OCT 2009 to 19 NOV 2009

SW-4, 22 OCT 2009 to 19 NOV 2009