

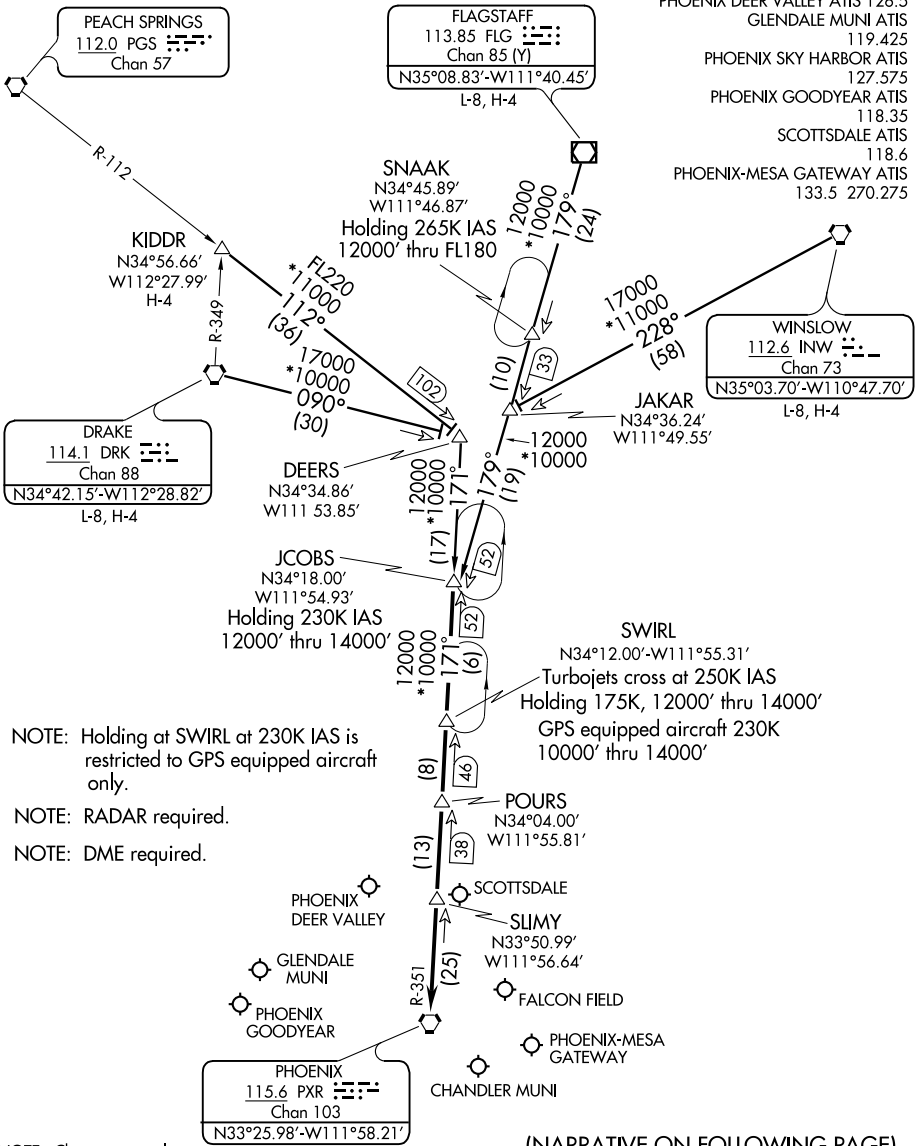
JCOBS TWO ARRIVAL

SCOTTSDALE, ARIZONA

- PHOENIX APP CON 120.7 239.0
- DEER VALLEY TOWER * 118.4 (Rwy 7R-25L) 120.2 (Rwy 7L-25R)
- FALCON TOWER * 124.6
- SCOTTSDALE TOWER * 119.9
- CHANDLER MUNI ATIS 128.325
- PHOENIX DEER VALLEY ATIS 126.5
- GLENDALE MUNI ATIS 119.425
- PHOENIX SKY HARBOR ATIS 127.575
- PHOENIX GOODYEAR ATIS 118.35
- SCOTTSDALE ATIS 118.6
- PHOENIX-MESA GATEWAY ATIS 133.5 270.275

SW-4, 22 OCT 2009 to 19 NOV 2009

SW-4, 22 OCT 2009 to 19 NOV 2009



NOTE: Holding at SWIRL at 230K IAS is restricted to GPS equipped aircraft only.

NOTE: RADAR required.

NOTE: DME required.

NOTE: Chart not to scale.

(NARRATIVE ON FOLLOWING PAGE)

JCOBS TWO ARRIVAL

SCOTTSDALE, ARIZONA