

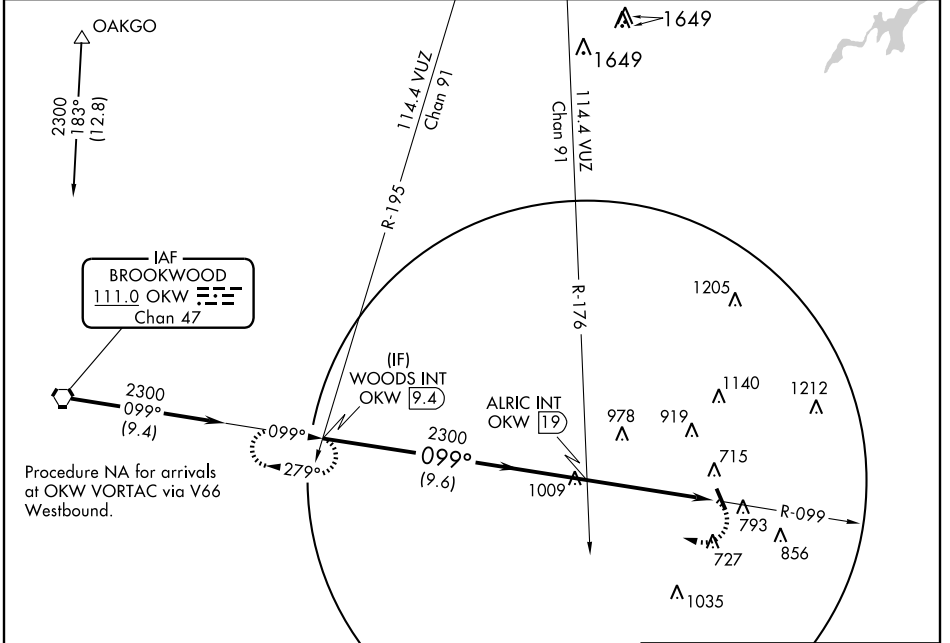
VORTAC OKW <b>111.0</b> Chan <b>47</b>	APP CRS <b>099°</b>	Rwy Idg TDZE Apt Elev	<b>N/A</b> <b>N/A</b> <b>587</b>
--	------------------------	-----------------------------	--

**VOR-A**

ALABASTER /SHELBY COUNTY (E/E)T

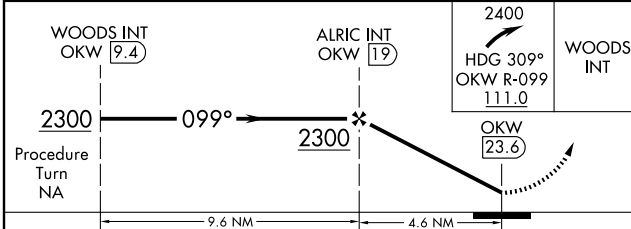
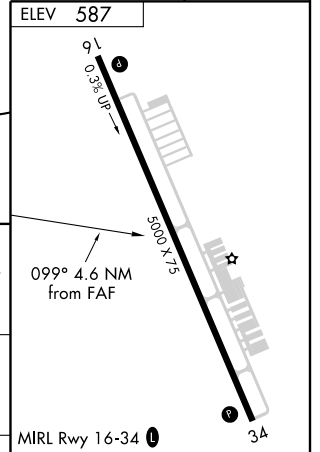
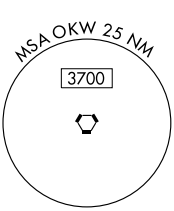
<p><b>▼</b> When local altimeter setting not received, use Birmingham altimeter setting and increase all MDA 80 feet; increase Circling Cat C and D visibility 1/4 mile.</p>	<p><b>▲</b> MISSED APPROACH: Climbing right turn to 2400 via heading 309° and OKW VORTAC R-099 to WOODS INT/9.4 DME and hold.</p>
--	---

ASOS <b>134,325</b>	BIRMINGHAM APP CON <b>123.8 385.6</b>	GCO <b>121.725</b>	UNICOM <b>122.7 (CTAF)</b> <b>0</b>
------------------------	--	-----------------------	--



SE-4, 22 OCT 2009 to 19 NOV 2009

SE-4, 22 OCT 2009 to 19 NOV 2009



CATEGORY	A	B	C	D	FAF to MAP 4.6 NM					
CIRCLING	1300-1 713 (800-1)	1300-1¼ 713 (800-1¼)	1300-2 713 (800-2)	1300-2¼ 713 (800-2¼)	Knots	60	90	120	150	180
					Min:Seq	4:36	3:04	2:18	1:50	1:32

**VOR-A**