

RNAV (GPS) RWY 30

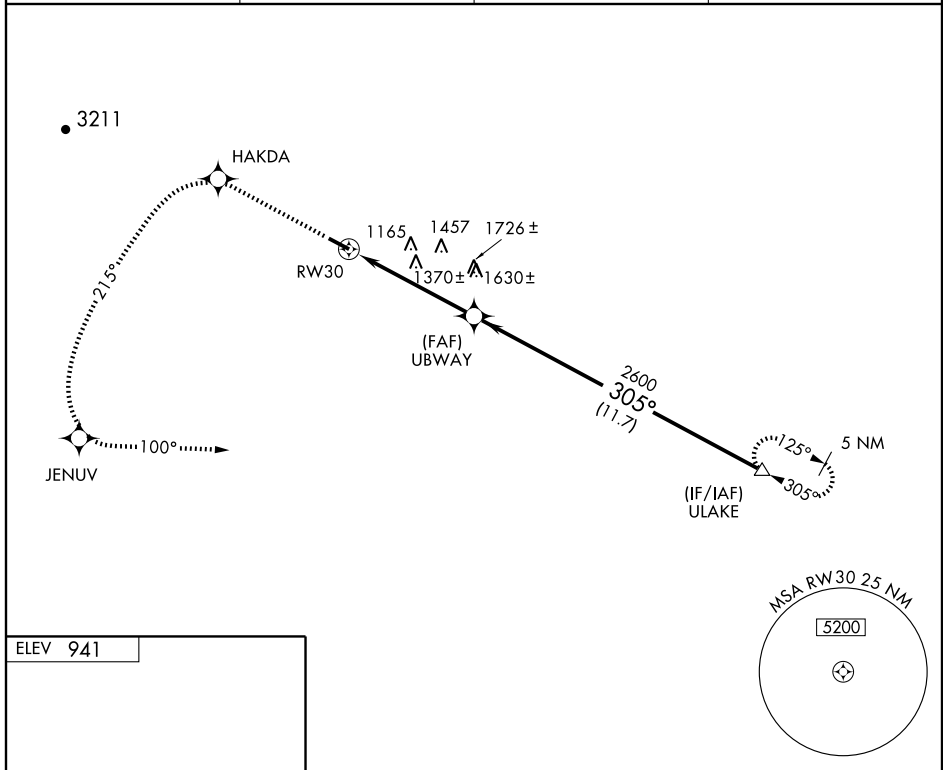
MARTINSVILLE/ BLUE RIDGE (MTV)

| | | | |
|--|------------------------|-----------------------------|---|
| WAAS CH 65802 W30A | APP CRS 305° | Rwy Idg TDZE Apt Elev | 5002 925 941 |
|--|------------------------|-----------------------------|---|

▼ If local altimeter setting not received, use Reidsville, NC altimeter setting and increase DAs to 1344 feet and all MDAs 180 feet.
▲ Inoperative table does not apply.
 Visibility reduction by helicopters NA. DME/DME RNP-0,3 NA.

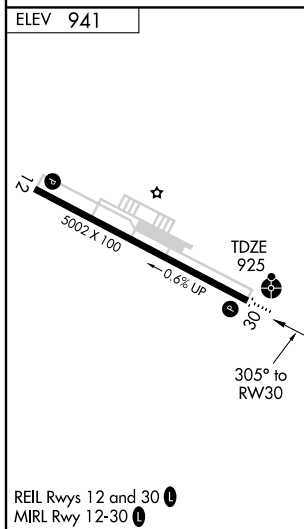
ODALS
 MISSED APPROACH: Climb to 3200 direct HAKDA and via 215° track to JENUV and left turn via 100° track to ULAKE and hold.

| | | | |
|-------------------------|---|---------------------------|---------------------------------|
| AWOS-3 118.45 | GREENSBORO APP CON 124.35 269.225 | CLNC DEL 124.85 | UNICOM 122.7 (CTAF) 0 |
|-------------------------|---|---------------------------|---------------------------------|



NE-3, 22 OCT 2009 to 19 NOV 2009

NE-3, 22 OCT 2009 to 19 NOV 2009



| | | | | |
|----------|--------------------------|--------------------------|-------------|-------------------|
| 3200 | HAKDA | JENUV | ULAKE | Procedure Turn NA |
| ↑ | ✧ | ✧ | △ | |
| | TRK 215° | TRK 100° | | |
| | *2.9 NM to RW30 | | UBWAY | 3000 |
| | RW30 | | *LNAV only. | 2600 |
| | 2.9 | 2.2 NM | 11.7 NM | GS 3.00° TCH 40 |
| CATEGORY | A | | B | C |
| LPV DA | 1175-1 250 (300-1) | | | |
| LNAV MDA | 1880-1¼ 955 (1000-1¼) | 1880-1½ 955 (1000-1½) | 1880-3 | 995 (1000-3) |
| CIRCLING | 1880-1¼ 939 (1000-1¼) | 1880-1½ 939 (1000-1½) | 1880-3 | 939 (1000-3) |