

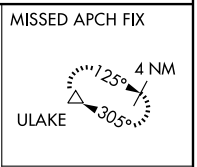
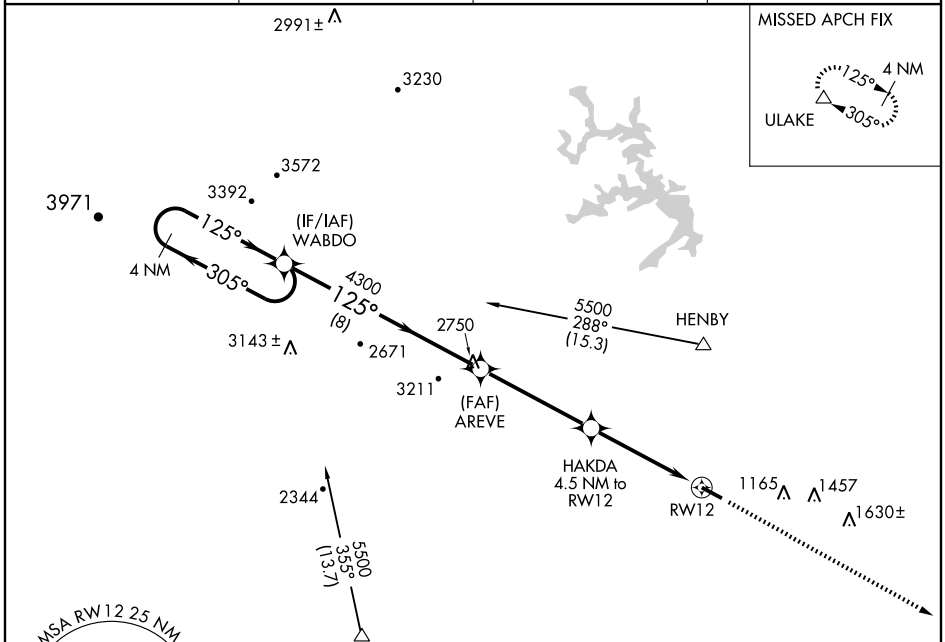
RNAV (GPS) RWY 12

MARTINSVILLE/BLUE RIDGE (MTV)

APP CRS	Rwy Idg	5002
125°	TDZE	941
	Apt Elev	941

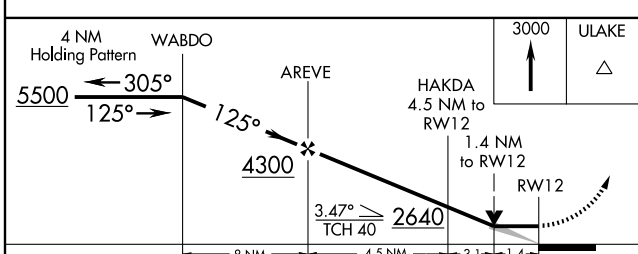
▽	GPS or RNP -0.3 required.	MISSED APPROACH: Climb to 3000 direct ULAKE WP and hold.
△ NA	DME/DME RNP -0.3 NA.	

AWOS-3 118.45	GREENSBORO APP CON 124.35 269.225	CLNC DEL 124.85	UNICOM 122.7 (CTAF) 📻
-------------------------	---------------------------------------------	---------------------------	----------------------------------------



NE-3, 22 OCT 2009 to 19 NOV 2009

NE-3, 22 OCT 2009 to 19 NOV 2009



CATEGORY	A	B	C	D
LNAV MDA	1420-1	479 (500-1)	1420-1¼ 479 (500-1¼)	1420-1½ 479 (500-1½)
CIRCLING	1420-1	479 (500-1)	1420-1½ 479 (500-1½)	1520-2 579 (600-2)

REIL Rwy 12 and 30 **📻**

MIRL Rwy 12-30 **📻**