

MARTINSVILLE, VIRGINIA

AL-5648 (FAA)

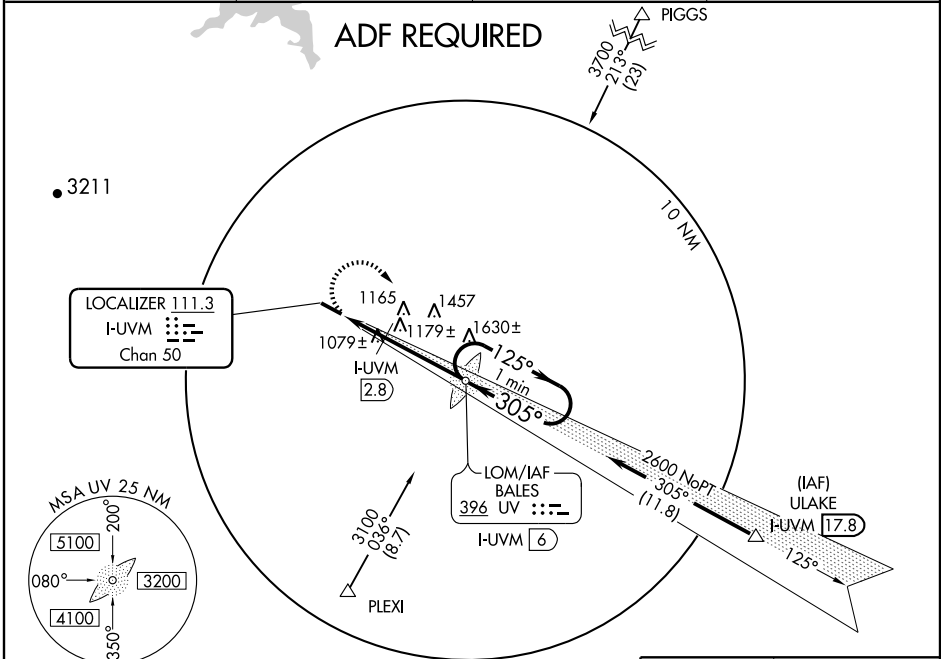
LOC RWY 30

MARTINSVILLE/BLUE RIDGE (MTV)

LOC/DME I-UVM 111.3 Chan 50	APP CRS 305°	Rwy Idg 5002 TDZE 925 Apt Elev 942
---	------------------------	---

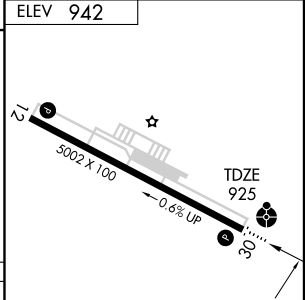
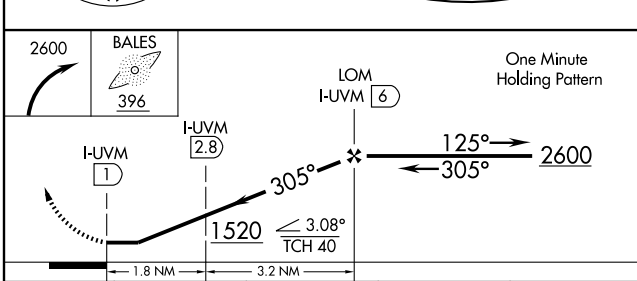
Inoperative table does not apply to ODALS NA Rwy 30.	ODALS	MISSED APPROACH: Climbing right turn to 2600 to BALES LOM and hold.
---	-------	---

AWOS-3 118.45	GREENSBORO APP CON 124.35 269.225	CLNC DEL 124.85	UNICOM 122.7 (CTAF) 0
-------------------------	---	---------------------------	---------------------------------



NE-3, 22 OCT 2009 to 19 NOV 2009

NE-3, 22 OCT 2009 to 19 NOV 2009



CATEGORY	A	B	C	D
S-30	1520-1 595 (600-1)		1520-1½ 595 (600-1½)	1520-1¾ 595 (600-1¾)
CIRCLING	1560-1 618 (700-1)		1560-1¾ 618 (700-1¾)	1560-2 618 (700-2)
DME MINIMUMS				
S-30	1340-1 415 (400-1)		1340-1¼ 415 (400-1¼)	
CIRCLING	1560-1 618 (700-1)		1560-1¾ 618 (700-1¾)	1560-2 618 (700-2)

REIL Rws 12 and 30
MIRL Rwy 12-30

FAF to MAP 5 NM

Knots	60	90	120	150	180
Min:Sec	5:00	3:20	2:30	2:00	1:40

MARTINSVILLE, VIRGINIA

Orig 08157

36°38'N-80°01'W

MARTINSVILLE/BLUE RIDGE (MTV)

LOC RWY 30