

GALLATIN, TENNESSEE

AL-5646 (FAA)

VORTAC BNA 114.1 Chan 88	APP CRS 045°	Rwy Idg TDZE Apt Elev 584	N/A N/A 584
--	------------------------	---	--

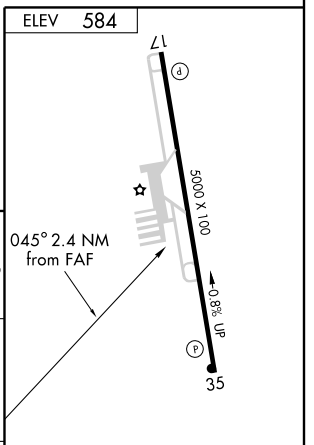
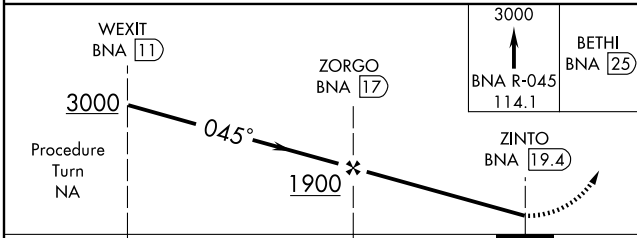
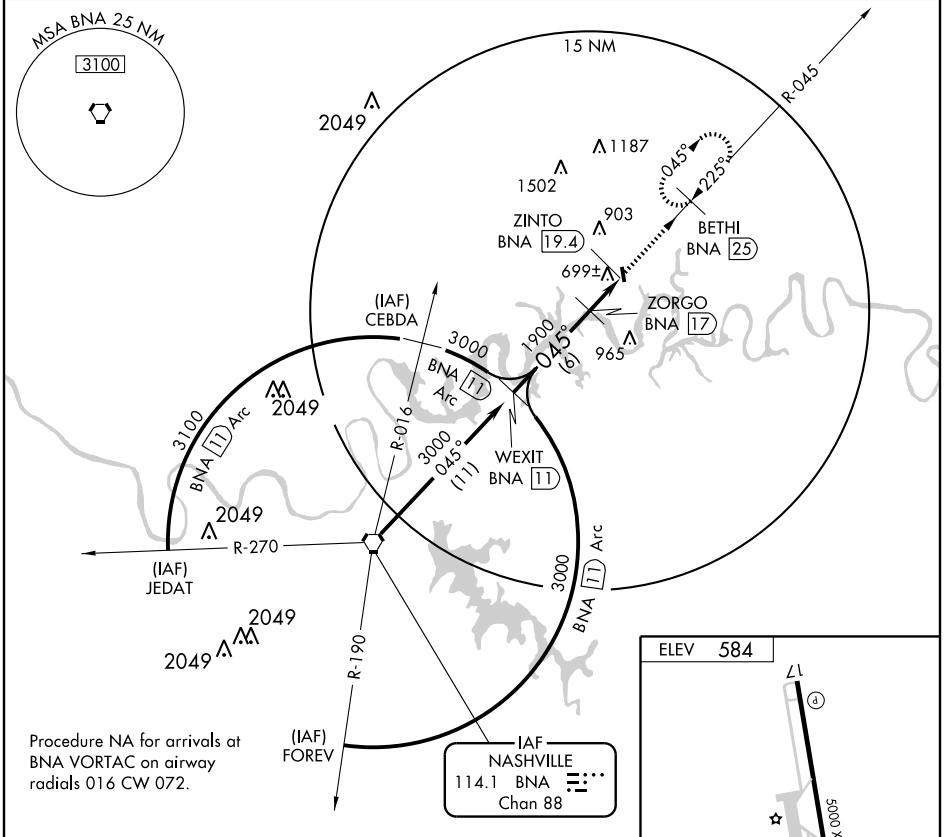
VOR/DME-A

GALLATIN/ SUMNER COUNTY RGNL (M33)

NA If local altimeter setting not received, use Nashville Intl altimeter setting and increase all MDAs 60 feet.

MISSED APPROACH: Climb to 3000 via BNA VORTAC 045° radial to BETHI/ 25 DME and hold.

AWOS-3 132.725	NASHVILLE APP CON 118.4 360.7	GCO 135.075	UNICOM 123.05 (CTAF)
--------------------------	---	-----------------------	--------------------------------



CATEGORY	A	B	C	D	
CIRCLING	1140-1	556 (600-1)	1140-1½ 556 (600-1½)	1240-2 656 (700-2)	MIRL Rwy 17-35 REIL Rwy 17 and 35

GALLATIN, TENNESSEE
Amdt 2 09071

36° 23' N-86° 25' W

GALLATIN/ SUMNER COUNTY RGNL (M33)

VOR/DME-A

SE-1, 22 OCT 2009 to 19 NOV 2009

SE-1, 22 OCT 2009 to 19 NOV 2009