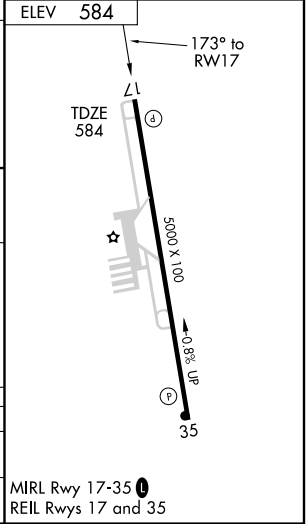
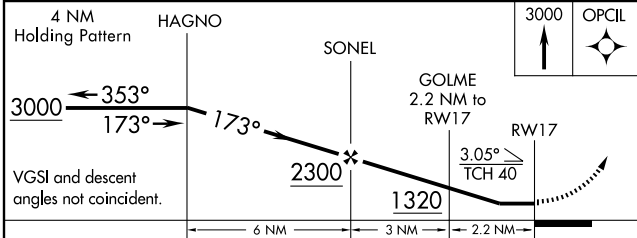
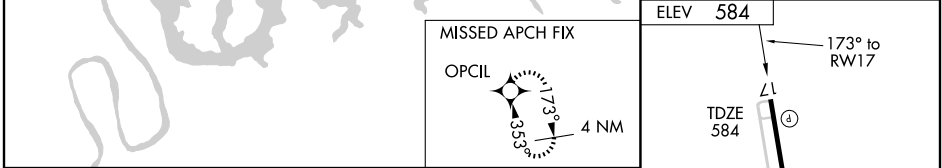
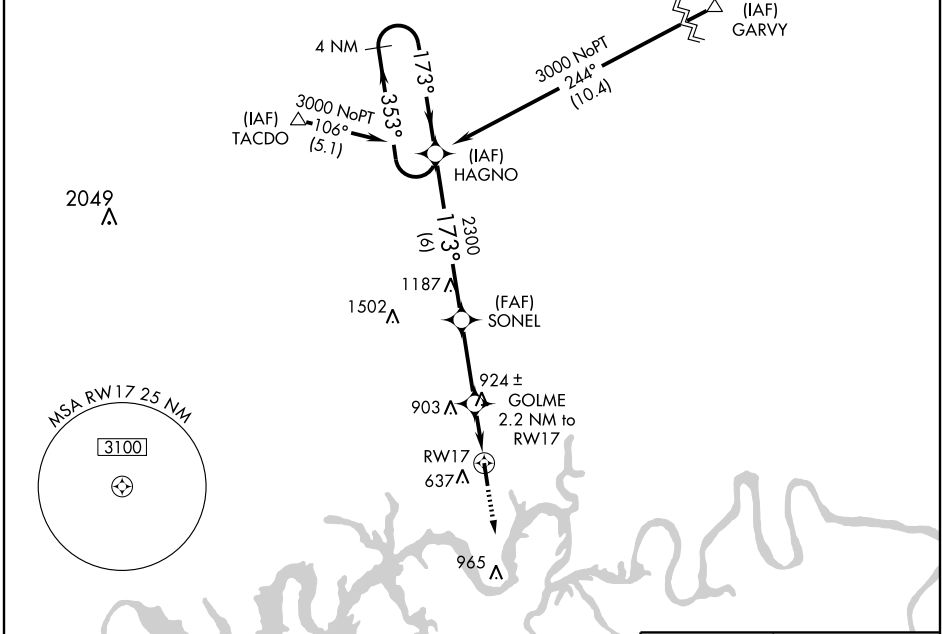


RNAV (GPS) RWY 17

GALLATIN/ SUMNER COUNTY RGNL (M33)

APP CRS 173°	Rwy Idg 5000
	TDZE 584
	Apt Elev 584

<p>⚠ If local altimeter setting not received, use Nashville Intl altimeter setting and increase all MDAs 60 feet. GPS or RNP-0.3 Required. DME/DME RNP-0.3 NA.</p>	<p>MISSED APPROACH: Climb to 3000 direct OPCIL WP and hold.</p>		
<p>AWOS-3 132.725</p>	<p>NASHVILLE APP CON 118.4 360.7</p>	<p>GCO 135.075</p>	<p>UNICOM 123.05 (CTAF) ①</p>



CATEGORY	A	B	C	D
RNAV MDA	1180-1	596 (600-1)	1180-1½ 596 (600-1½)	1180-1¾ 596 (600-1¾)
CIRCLING	1180-1	596 (600-1)	1180-1½ 596 (600-1½)	1240-2 656 (700-2)

SE-1, 22 OCT 2009 to 19 NOV 2009

SE-1, 22 OCT 2009 to 19 NOV 2009