

# RNAV (GPS) RWY 6

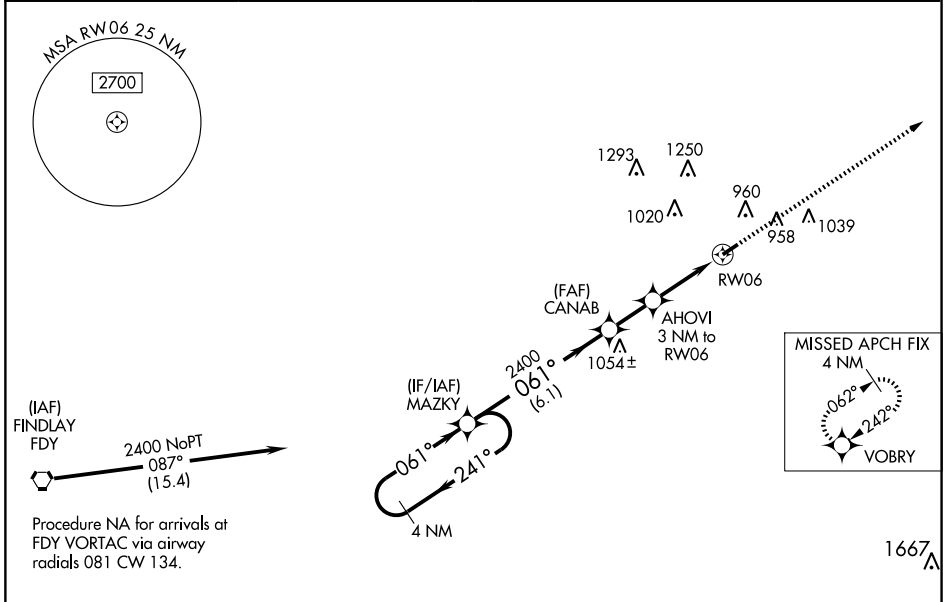
TIFFIN / SENECA COUNTY (16G)

WAAS CH <b>77713</b> <b>W06A</b>	APP CRS <b>061°</b>	Rwy Idg TDZE Apt Elev	<b>4000</b> <b>786</b> <b>786</b>
--	------------------------	-----------------------------	---

**▽** Baro-VNAV NA when using Findlay altimeter setting. For uncompensated Baro-VNAV systems, LNAV/VNAV NA below -16°C (4°F) or above 54°C (130°F). DME/DME-0.3 NA.  
**△ NA** Visibility reduction by helicopters NA. When local altimeter setting not received, use Findlay altimeter setting and increase all DA 53 feet and all MDA 60 feet, increase LPV all Cots visibilities ¼ mile and LNAV Cat C visibility ¼ mile. Straight-in/Circling Rwy 6 NA at night.

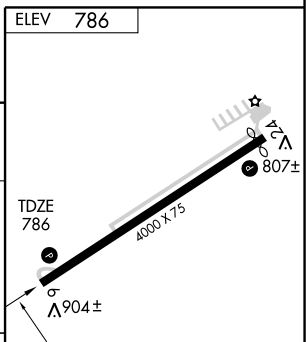
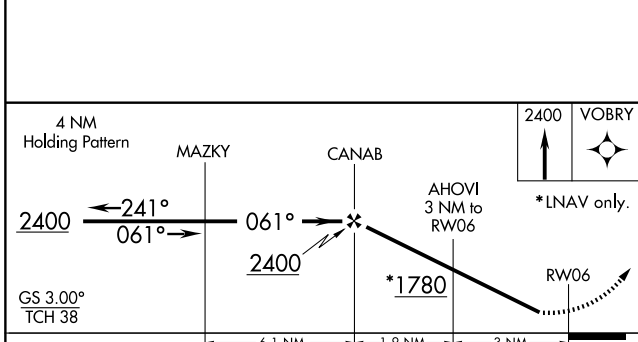
**MISSED APPROACH:**  
Climb to 2400 direct VOBRY and hold.

AWOS-3 <b>121.175 458.625</b>	FINDLAY ASOS <b>124.425</b>	TOLEDO APP CON <b>120.8 317.55</b>	UNICOM <b>123.0 (CTAF)</b>
----------------------------------	--------------------------------	---------------------------------------	-------------------------------



EC-2, 22 OCT 2009 to 19 NOV 2009

EC-2, 22 OCT 2009 to 19 NOV 2009



CATEGORY	A	B	C	D
LPV DA	1137-1¼	351 (400-1¼)		NA
LNAV/VNAV DA	1174-1½	388 (400-1½)		NA
LNAV MDA	1160-1	374 (400-1)		NA
CIRCLING	1260-1	474 (500-1)	1260-1½ 474 (500-1½)	NA

MIRL Rwy 6-24  
REIL Rws 6 and 24