

TIFFIN, OHIO

AL-5645 (FAA)

RNAV (GPS) RWY 24

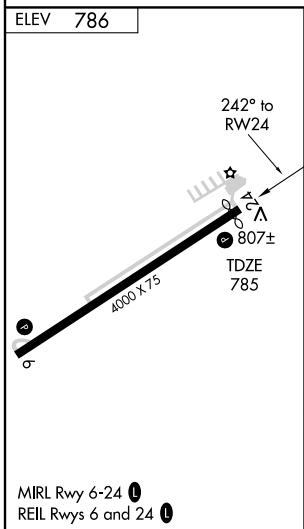
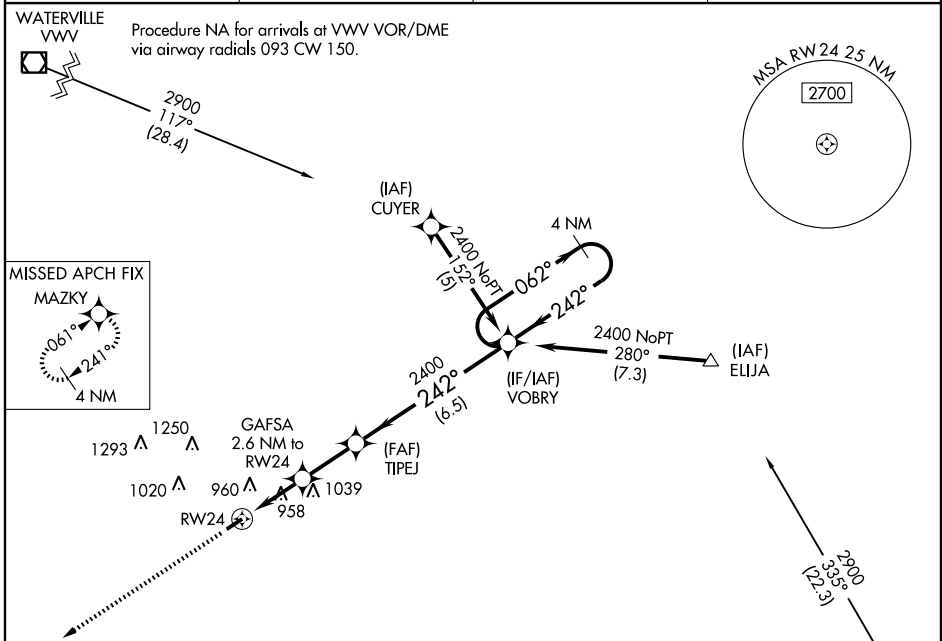
TIFFIN / SENECA COUNTY (16G)

APP CRS	Rwy Idg	3885
242°	TDZE	785
	Apt Elev	786

⚠ Circling to Rwy 6 NA at night. DME/DME RNP-0.3 NA.
⚠ NA Visibility reduction by helicopters NA. When local altimeter setting not received, use Findlay altimeter setting and increase all MDA 60 feet and LNAV Cat C visibility ¼ mile.

MISSED APPROACH:
 Climb to 2400 direct MAZKY and hold.

AWOS-3 121.175 458.625	FINDLAY ASOS 124.425	TOLEDO APP CON 120.8 317.55	UNICOM 123.0 (CTAF) ⓪
----------------------------------	--------------------------------	---------------------------------------	--



Procedure NA for arrivals at MFD VORTAC via airway radials 279 CW 358.

MANSFIELD MFD **⓪** 1598 ±

2400	MAZKY	GAFSA 2.6 NM to RW24	TIPEJ	VOBRY	4 NM Holding Pattern
		≤ 3.04° TCH 38	2400	242°	062°
		1640	2400	← 242°	→ 2400
		2.6 NM	2.3 NM	6.5 NM	
CATEGORY	A	B	C	D	
LNAV MDA	1260-1	475 (500-1)	1260-1¼ 475 (500-1¼)	NA	
CIRCLING	1260-1	474 (500-1)	1260-1½ 474 (500-1½)	NA	

EC-2, 22 OCT 2009 to 19 NOV 2009

EC-2, 22 OCT 2009 to 19 NOV 2009

TIFFIN, OHIO
 Orig 09295

41°06'N - 83°13'W

RNAV (GPS) RWY 24