

TIFFIN, OHIO

AL-5645 (FAA)

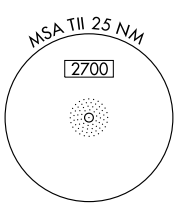
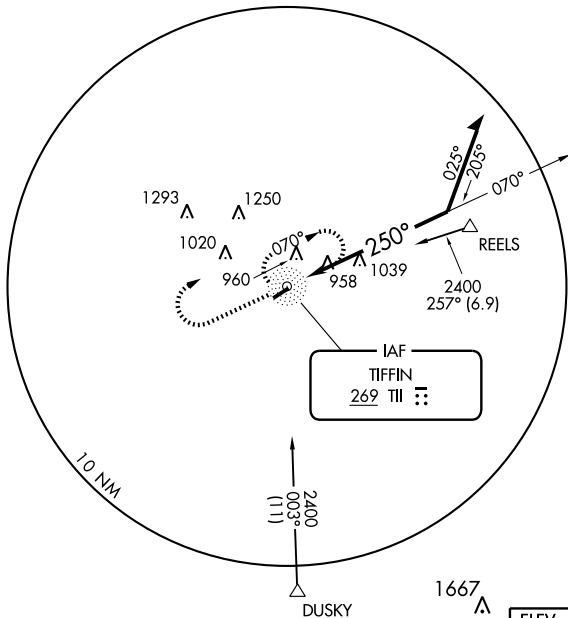
NDB RWY 24

TIFFIN / SENECA COUNTY (16G)

NDB TII 269	APP CRS 250°	Rwy Idg TDZE Apt Elev	3885 785 786
-----------------------	------------------------	-----------------------------	---

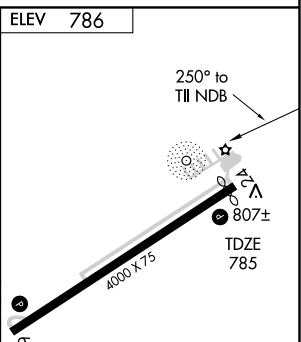
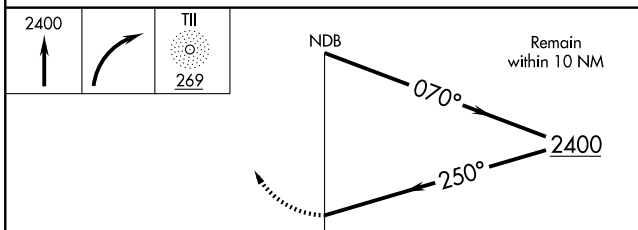
<p>▼ Obtain local altimeter setting on CTAF; when not received, use Findlay altimeter setting.</p> <p>▲ NA</p>	<p>MISSED APPROACH: Climb to 2400, then right turn direct TII NDB and hold.</p>
--	---

AWOS-3 121.175 458.625	FINDLAY ASOS 124.425	TOLEDO APP CON 120.8 317.55	UNICOM 123.0 (CTAF) 1
----------------------------------	--------------------------------	---------------------------------------	--



EC-2, 22 OCT 2009 to 19 NOV 2009

EC-2, 22 OCT 2009 to 19 NOV 2009



CATEGORY	A	B	C	D
S-24	1420-1	635 (700-1)	1420-1¼ 635 (700-1¾)	1420-2 635 (700-2)
CIRCLING	1420-1	634 (700-1)	1420-1¼ 634 (700-1¾)	1420-2 634 (700-2)
FINDLAY ALTIMETER SETTING MINIMUMS				
S-24	1460-1	675 (700-1)	1460-2 675 (700-2)	1460-2¼ 675 (700-2½)
CIRCLING	1460-1	674 (700-1)	1460-2 674 (700-2)	1460-2¼ 674 (700-2½)

MIRL Rwy 6-24 **1**
REIL Rwy 6 and 24 **1**

TIFFIN, OHIO
Amdt 7B 09295

41°06'N - 83°13'W

TIFFIN / SENECA COUNTY (16G)
NDB RWY 24