

# RNAV (GPS) RWY 27

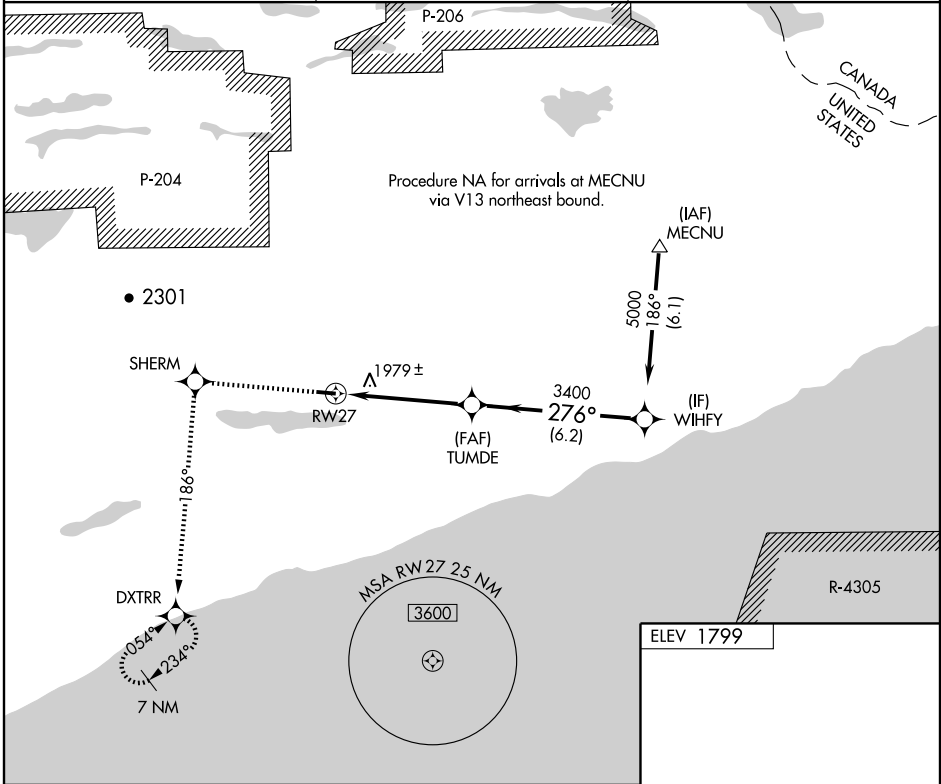
GRAND MARAIS/COOK COUNTY (CKC)

APP CRS	Rwy Idg	<b>4199</b>
<b>276°</b>	TDZE	<b>1797</b>
	Apt Elev	<b>1799</b>

**▼** DME/DME RNP-0.3 NA. Visibility reduction by helicopters NA.  
**▲** When local altimeter setting not received, use Ely altimeter setting and increase all MDA 200 feet, increase LNAV Cat C visibility ½ mile, circling Cat B visibility ¼ mile, and circling Cat C visibility ¾ mile.

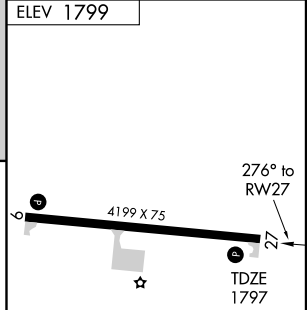
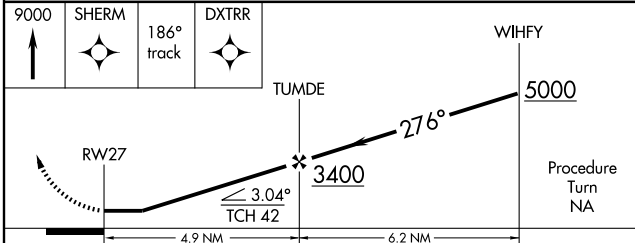
**MISSED APPROACH:** Climb to 9000 direct SHERM and via 186° track to DXTRR and hold, continue climb-in-hold to 9000.

AWOS-3 <b>119.925</b>	PRINCETON RADIO <b>122.3</b>	UNICOM <b>122.8 (CTAF)</b>
--------------------------	---------------------------------	-------------------------------



NC-1, 22 OCT 2009 to 19 NOV 2009

NC-1, 22 OCT 2009 to 19 NOV 2009



CATEGORY	A	B	C	D
LNAV MDA	2240-1	443 (500-1)	2240-1½ 443 (500-1½)	NA
CIRCLING	2340-1	541 (600-1)	2340-1½ 541 (600-1½)	NA

MIRL Rwy 9-27 **①**  
 REIL Rwys 9 and 27 **①**