

GRAND MARAIS, MINNESOTA

AL-5643 (FAA)

# NDB RWY 27

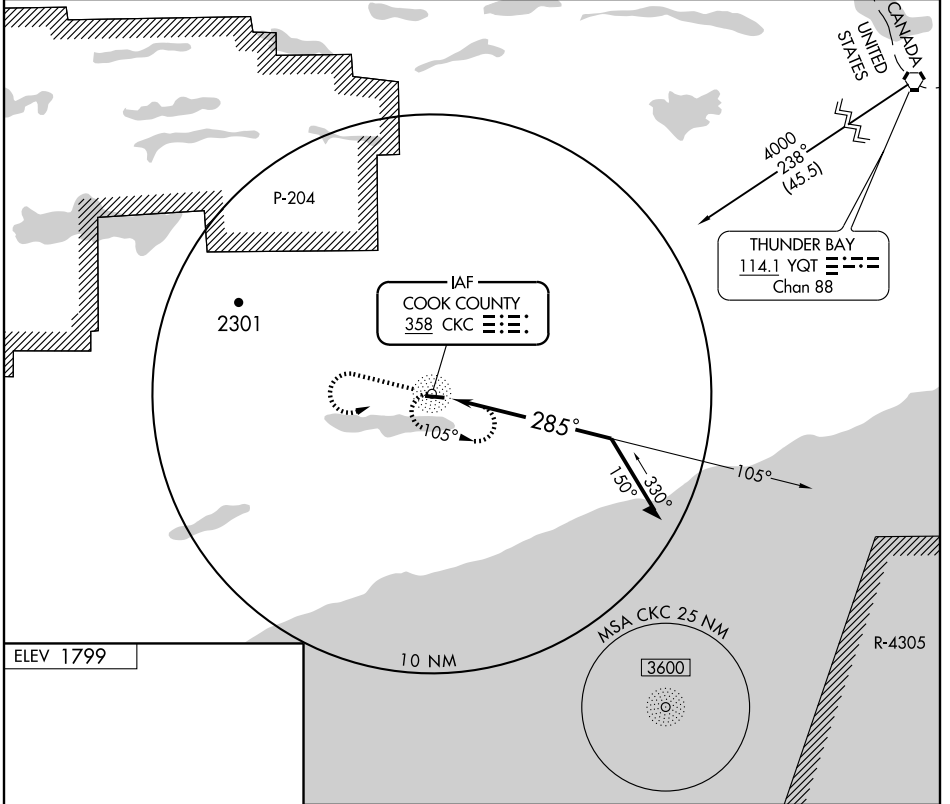
GRAND MARAIS/COOK COUNTY (CKC)

NDB CKC <b>358</b>	APP CRS <b>285°</b>	Rwy Idg TDZE Apt Elev	<b>4199</b> <b>1797</b> <b>1799</b>
-----------------------	------------------------	-----------------------------	-------------------------------------------

**▽**  
**▲** NA

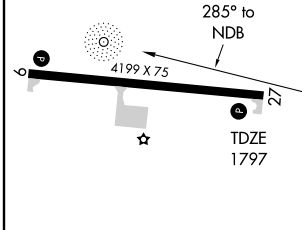
MISSED APPROACH: Climb to 3000, then climbing left turn to 3500 direct CKC NDB and hold.

AWOS-3 <b>119.925</b>	PRINCETON RADIO <b>122.3</b>	UNICOM <b>122.8</b> (CTAF) <b>0</b>
--------------------------	---------------------------------	----------------------------------------

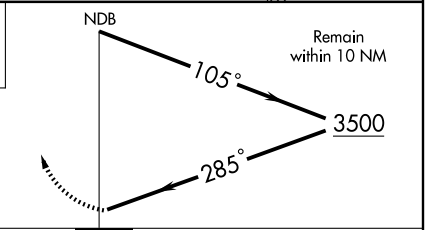


NC-1, 22 OCT 2009 to 19 NOV 2009

NC-1, 22 OCT 2009 to 19 NOV 2009



3000	3500	CKC 358
------	------	------------



CATEGORY	A	B	C	D
S-27	2340-1	543 (600-1)	2340-1½ 543 (600-1½)	NA
CIRCLING	2340-1	541 (600-1)	2340-1½ 541 (600-1½)	NA

GRAND MARAIS, MINNESOTA  
Orig-C 09295

47°50'N-90°23'W

# GRAND MARAIS/COOK COUNTY (CKC)

## NDB RWY 27