

VOR/DME DXO 113.4 Chan 81	APP CRS 017°	Rwy Idg 4997 TDZE 614 Apt Elev 616
---	------------------------	---

VOR RWY 3
MONROE/CUSTER (TTF)

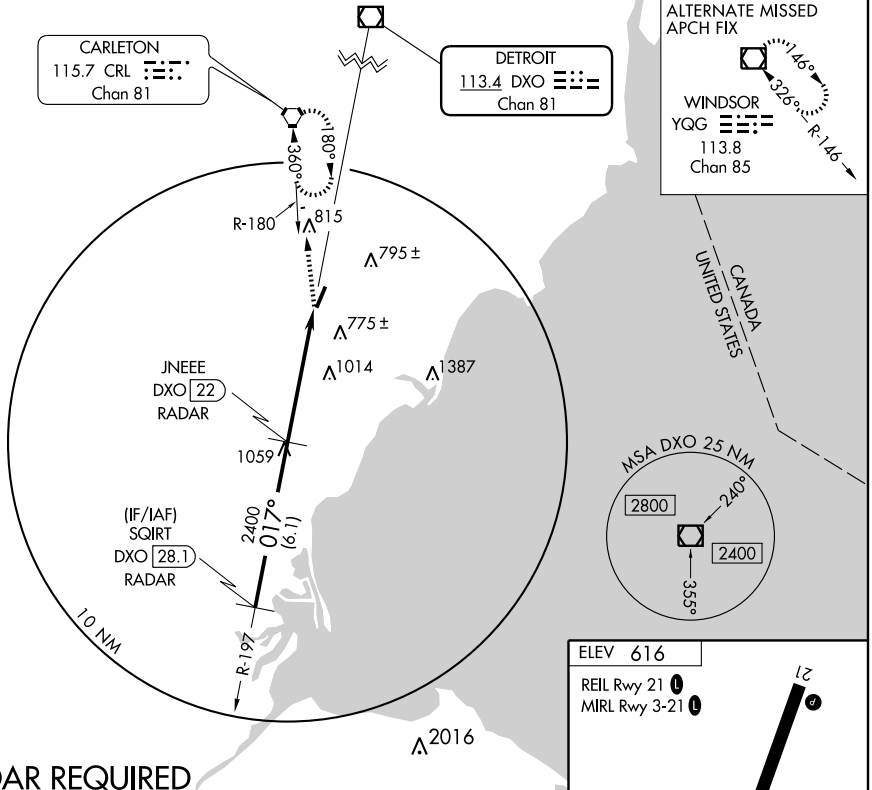
⚠ DME or RADAR required. When local altimeter setting not received, use Detroit Metropolitan Wayne County altimeter setting and increase all MDAs 60 feet, and increase Cat C and D visibility ¼ mile.

MISSED APPROACH: Climb to 3000 direct CRL VORTAC and hold.

AWOS-3 119.075	DETROIT APP CON 134.3 363.2	GCO 121.725	UNICOM 122.7 (CTAF)
--------------------------	---------------------------------------	-----------------------	-------------------------------

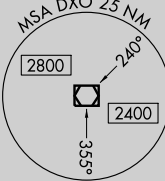
EC-1, 22 OCT 2009 to 19 NOV 2009

EC-1, 22 OCT 2009 to 19 NOV 2009

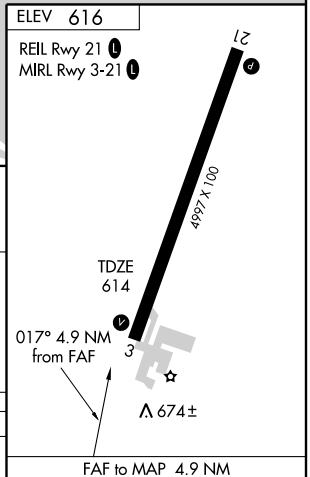
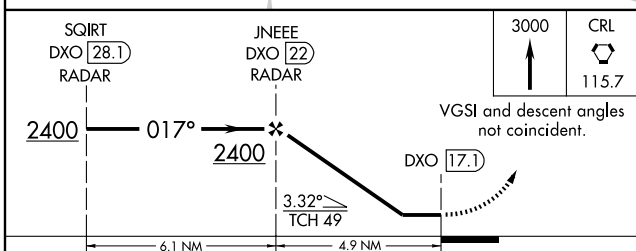


ALTERNATE MISSED APCH FIX

WINDSOR YQG
113.8
Chan 85



RADAR REQUIRED



CATEGORY	A	B	C	D
S-3	1320-1 706 (800-1)		1320-2 706 (800-2)	1320-2 706 (800-2) 1/4
CIRCLING	1320-1 704 (800-1)		1320-2 704 (800-2)	1320-2 704 (800-2) 1/4

FAF to MAP 4.9 NM					
Knots	60	90	120	150	180
Min:Sec	4:54	3:16	2:27	1:58	1:38