

MONROE, MICHIGAN

AL-5642 (FAA)

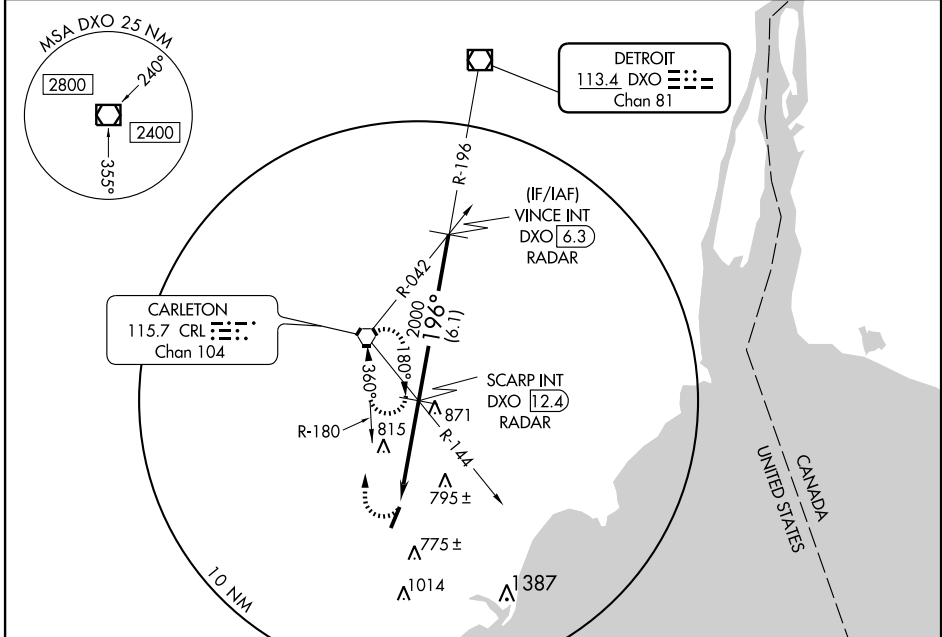
VOR/DME DXO 113.4 Chan 81	APP CRS 196°	Rwy Idg 4997 TDZE 616 Apt Elev 616
---	------------------------	---

VOR RWY 21
MONROE/CUSTER (TTF)

⚠ When local altimeter setting not received, use Detroit Metropolitan Wayne County altimeter setting and increase all MDA 60 feet, and increase Cat C and D visibility ¼ mile. VDP NA when using Detroit Metropolitan Wayne County altimeter setting.

⚠ MISSED APPROACH: Climbing right turn to 2600 direct CRL VORTAC and hold.

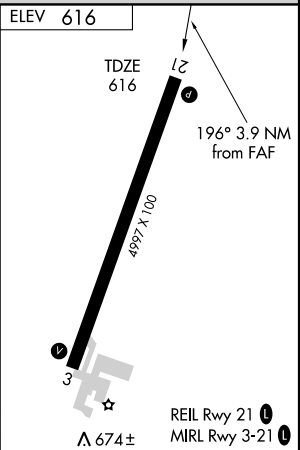
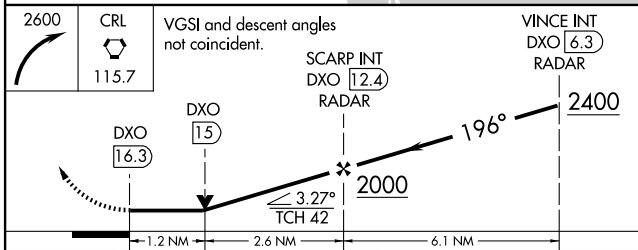
AWOS-3 119.075	DETROIT APP CON 134.3 363.2	GCO 121.725	UNICOM 122.7 (CTAF)
--------------------------	---------------------------------------	-----------------------	-------------------------------



EC-1, 22 OCT 2009 to 19 NOV 2009

EC-1, 22 OCT 2009 to 19 NOV 2009

RADAR REQUIRED



CATEGORY	A	B	C	D
S-21	1120-1 504 (600-1)	504 (600-1)	1120-1½ 564 (600-1½)	504 (600-1½)
CIRCLING	1120-1 504 (600-1)	1180-1 564 (600-1)	1180-1½ 564 (600-1½)	1180-2 564 (600-2)

FAF to MAP 3.9 NM					
Knots	60	90	120	150	180
Min:Sec	3:54	2:36	1:57	1:34	1:18

MONROE, MICHIGAN
Amdt 2 08213

41°56'N - 83°26'W

MONROE/CUSTER (TTF)
VOR RWY 21