

RNAV (GPS) RWY 3

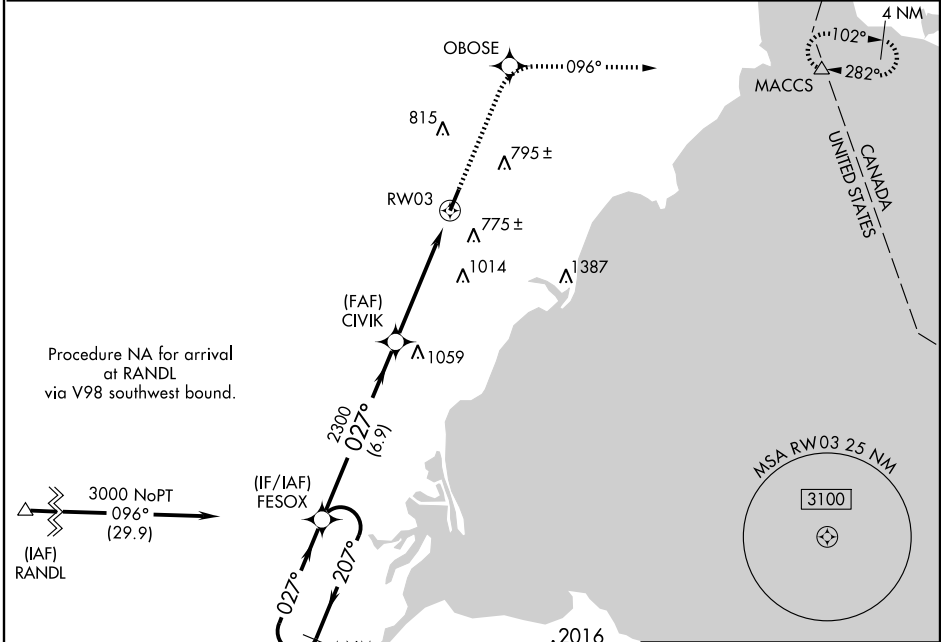
MONROE/CUSTER (TTF)

APP CRS 027°	Rwy Idg 4997
	TDZE 614
	Apt Elev 616

⚠ When local altimeter setting not received, use Detroit Metropolitan Wayne County altimeter setting and increase all MDA 60 feet, LNAV Cat C/D visibility ¼ mile, and Circling Cat C visibility ¼ mile. Visibility reduction by helicopters NA. DME/DME RNP-0.3 NA.

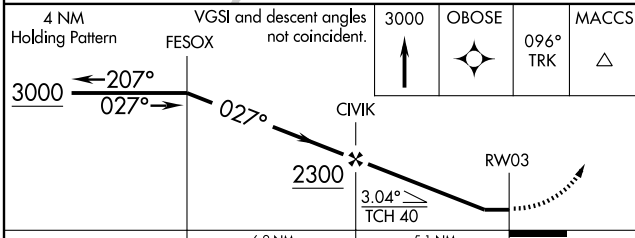
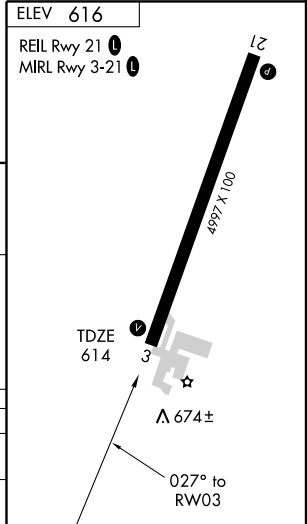
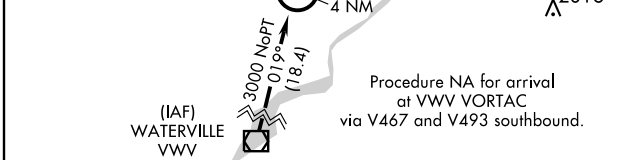
MISSED APPROACH: Climb to 3000 direct OBOSE and via 096° track to MACCS and hold.

AWOS-3 119.075	DETROIT APP CON 134.3 363.2	GCO 121.725	UNICOM 122.7 (CTAF)
--------------------------	---------------------------------------	-----------------------	-------------------------------



EC-1, 22 OCT 2009 to 19 NOV 2009

EC-1, 22 OCT 2009 to 19 NOV 2009



CATEGORY	A	B	C	D
LNAV MDA	1100-1	486 (500-1)	1100-1½ 486 (500-1¼)	1100-1½ 486 (500-1½)
CIRCLING	1120-1 504 (600-1)	1180-1 564 (600-1)	1180-1½ 564 (600-1½)	1180-2 564 (600-2)