

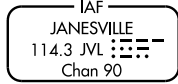
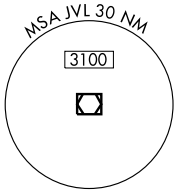
VOR/DME JVL 114.3 Chan 90	APP CRS 225°	Rwy Idg TDZE Apt Elev	5504 847 859
---	------------------------	-----------------------------	---

VOR RWY 24

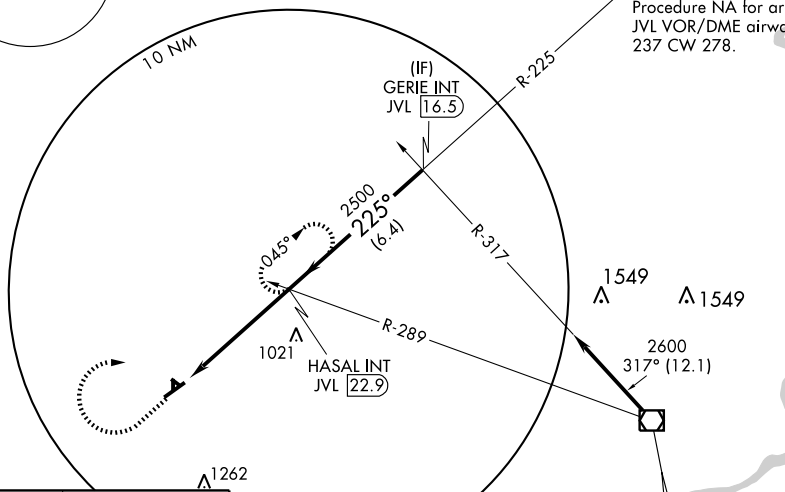
FREEPORT/ALBERTUS (F'EP)

⚠ If local altimeter setting not received, use Rockford altimeter setting and increase all MDAs 80 feet.	MALSR 	MISSED APPROACH: Climb to 2500 via JVL VOR/DME R-225 then right turn via heading 090° and JVL VOR/DME R-225 to HASAL INT 22.9 DME and hold.
---	------------------	--

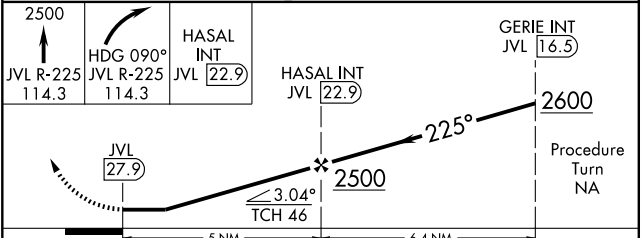
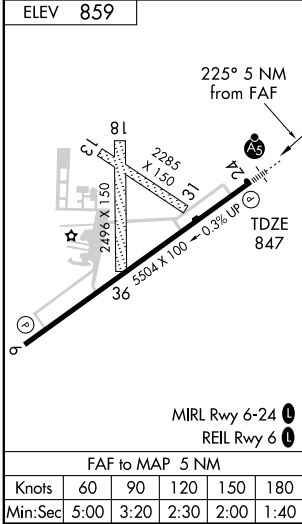
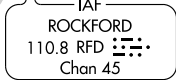
AWOS-3 120.525	ROCKFORD APP CON 126.0 327.0	CLNC DEL 121.85	UNICOM 122.8 (CTAF) 0
---------------------------------	---	----------------------------------	--



Procedure NA for arrivals on JVL VOR/DME airway radials 237 CW 278.



Procedure NA for arrivals on RFD VOR/DME airway radials 278 CW 327.



CATEGORY	A	B	C	D
S-24	1280-1 433 (500-1)	1280-1¼ 433 (500-¼)	1280-1½ 433 (500-½)	1280-2 433 (500-2)
CIRCLING	1300-1 441 (500-1)	1340-1¼ 481 (500-¼)	1380-1½ 521 (500-½)	1440-2 581 (600-2)

EC-3, 22 OCT 2009 to 19 NOV 2009

EC-3, 22 OCT 2009 to 19 NOV 2009