

FREEPORT, ILLINOIS

AL-5641 (FAA)

RNAV (GPS) RWY 6

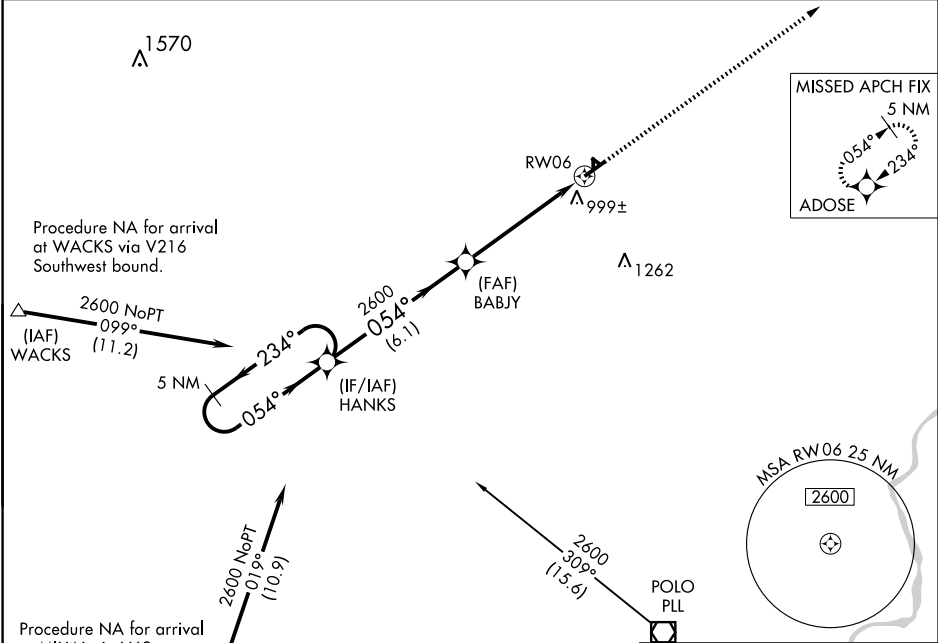
FREEPORT/ALBERTUS (FEP)

| | | | |
|--|------------------------|-----------------------------|---|
| WAAS CH 56404 W06A | APP CRS 054° | Rwy Idg TDZE Apt Elev | 5504 859 859 |
|--|------------------------|-----------------------------|---|

⚠ If local altimeter setting not received, use Rockford altimeter setting and increase all DAs 67 feet and all MDAs 80 feet. DME/DME RNP-0.3 NA. For uncompensated Baro-VNAV systems, LNAV/VNAV NA below -16° C (4° F) or above 47° C (116° F). Baro-VNAV and VDP NA when using Rockford altimeter setting.

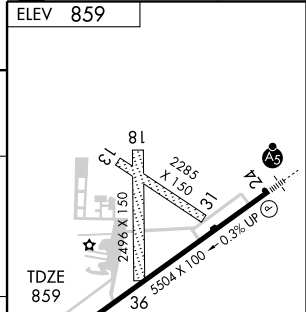
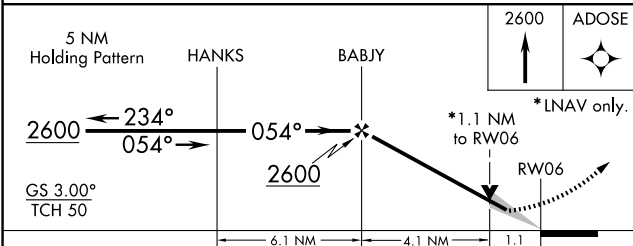
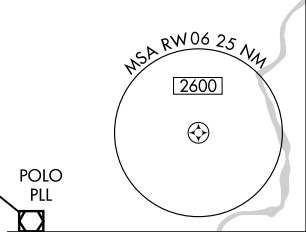
MISSED APPROACH: Climb to 2600 direct ADOSE and hold.

| | | | |
|--------------------------|--|----------------------------|---------------------------------|
| AWOS-3 120.525 | ROCKFORD APP CON 126.0 327.0 | CLINC DEL 121.85 | UNICOM 122.8 (CTAF) 0 |
|--------------------------|--|----------------------------|---------------------------------|



Procedure NA for arrival at WACKS via V216 Southwest bound.

Procedure NA for arrival at MIHAL via V63 Southwest bound.



| CATEGORY | A | B | C | D |
|--------------|----------------------|----------------------|----------------------|--------------------|
| LPV DA | 1109-1 250 (300-1) | | | |
| LNAV/VNAV DA | 1371-1¾ 512 (600-1¾) | | | |
| LNAV MDA | 1260-1 401 (500-1) | 1260-1¼ 401 (500-1¼) | | |
| CIRCLING | 1300-1 441 (500-1) | 1340-1 481 (500-1) | 1380-1½ 521 (600-1½) | 1440-2 581 (600-2) |

054° to RWY 6

MIRL Rwy 6-24 **0**

REIL Rwy 6 **0**

FREEPORT, ILLINOIS
Orig 09015

42° 15'N-89° 35'W

RNAV (GPS) RWY 6

EC-3, 22 OCT 2009 to 19 NOV 2009

EC-3, 22 OCT 2009 to 19 NOV 2009