

RNAV (GPS) RWY 24

FREEPORT/ALBERTUS (FEP)

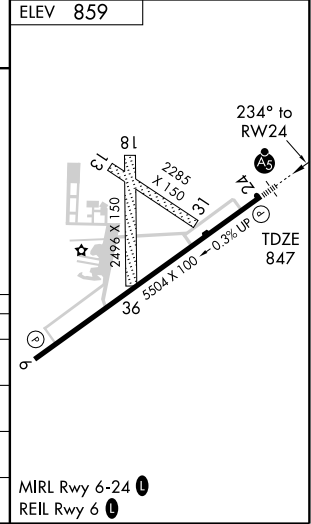
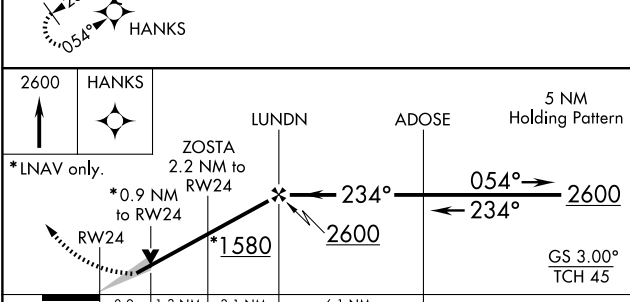
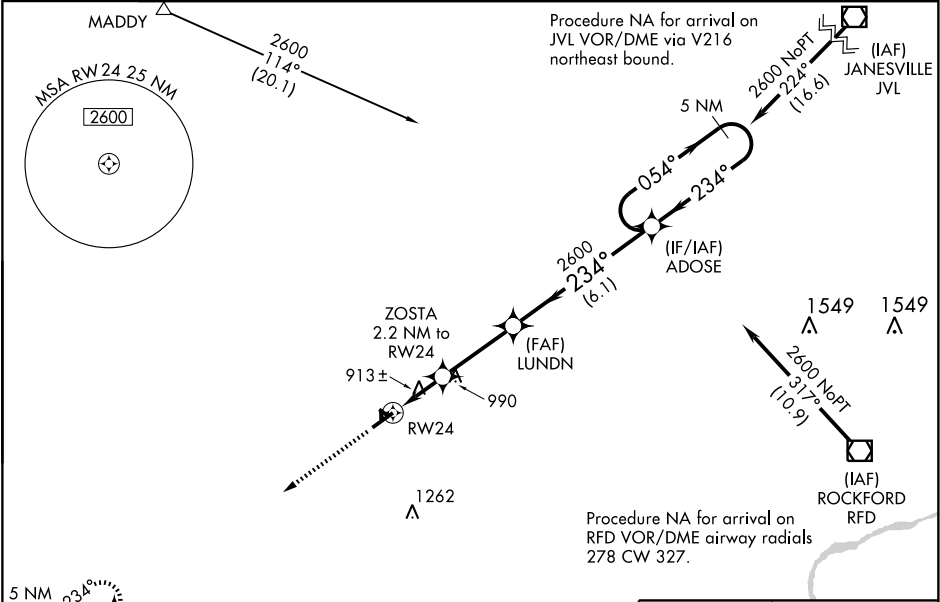
WAAS CH 78403 W24A	APP CRS 234°	Rwy Idg TDZE 847 Apt Elev 859	5504
---------------------------------	------------------------	---	-------------

If local altimeter setting not received, use Rockford altimeter setting and increase all DAs 67 feet and all MDAs 80 feet. DME/DME RNP-0.3 NA. For uncompensated Baro-VNAV systems, LNAV/VNAV NA below -16° C (4° F) or above 47° C (116° F). Baro-VNAV and VDP NA when using Rockford altimeter setting. For inoperative MALSR, increase LNAV/VNAV all Cats visibility to 1, and LNAV Cats A, B and C to 1. Inoperative table does not apply to LNAV Cat. D.

MALSR

MISSED APPROACH:
Climb to 2600 direct HANKS and hold.

AWOS-3 120.525	ROCKFORD APP CON 126.0 327.0	CLNC DEL 121.85	UNICOM 122.8 (CTAF)
--------------------------	--	---------------------------	-------------------------------



CATEGORY	A	B	C	D
LPV DA		1097-3/4	250 (300-3/4)	
LNAV/VNAV DA		1097-3/4	250 (300-3/4)	
LNAV MDA	1180-3/4	333 (400-3/4)		1180-1 333 (400-1)
CIRCLING	1300-1 441 (500-1)	1340-1 481 (500-1)	1380-1 1/2 521 (600-1 1/2)	1440-2 581 (600-2)

EC-3, 22 OCT 2009 to 19 NOV 2009

EC-3, 22 OCT 2009 to 19 NOV 2009