

# ILS or LOC RWY 24

FREEPORT/ALBERTUS (F'EP)

LOC/DME I-PJE <b>108.3</b> Chan 20	APP CRS <b>234°</b>	Rwy Idg <b>5504</b> TDZE <b>847</b> Apt Elev <b>859</b>
--	------------------------	---

**NA** For inoperative MALS, increase S-LOC 24 Cats A and B visibility to 1. If local altimeter setting not received, use Rockford altimeter setting and increase all DAs 67 feet and all MDAs 80 feet.

**MALS** MISSED APPROACH: Climb to 1400 then climbing right turn to 2600 via JVL VOR/DME R-221 to ADOSE Int/I-PJE 12.5 DME and hold.

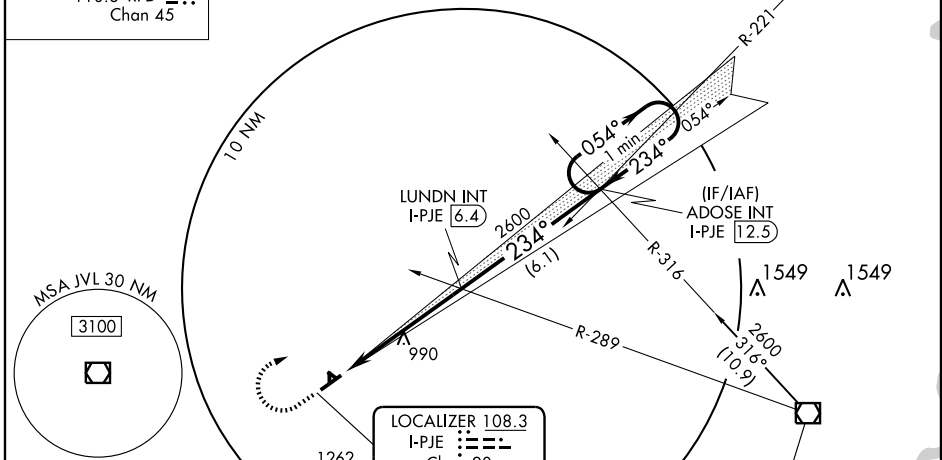
AWOS-3 <b>120.525</b>	ROCKFORD APP CON <b>126.0 327.0</b>	CLNC DEL <b>121.85</b>	UNICOM <b>122.8 (CTAF)</b>
--------------------------	--	---------------------------	-------------------------------

ALTERNATE MISSED APCH FIX

ROCKFORD  
110.8 RFD  
Chan 45

IAF JANSVILLE  
114.3 JVL  
Chan 90

Procedure NA for arrival on JVL VOR/DME airway radials 147 CW 278.

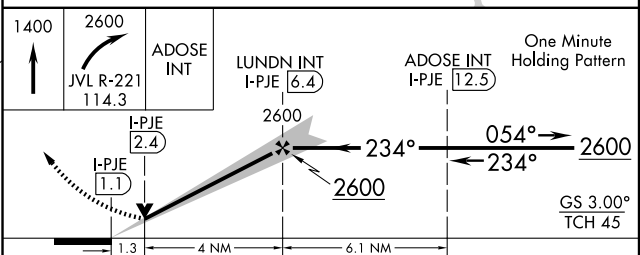


ELEV 859

234° 5.3 NM from FAF

81, 13, 2285 x 150, 13, 2496 x 150, 36, 5504 x 100 -0.3% UP

TDZE 847



CATEGORY	A	B	C	D
S-ILS 24	1047- <sup>3</sup> / <sub>4</sub> 200 (200- <sup>3</sup> / <sub>4</sub> )			
S-LOC 24	1300- <sup>3</sup> / <sub>4</sub> 453 (500- <sup>3</sup> / <sub>4</sub> )		1300-1 453 (500-1)	
CIRCLING	1300-1 441 (500-1)	1340-1 481 (500-1)	1380-1 <sup>1</sup> / <sub>2</sub> 521 (600-1 <sup>1</sup> / <sub>2</sub> )	1440-2 581 (600-2)

FAF to MAP 5.3 NM

Knots	60	90	120	150	180
Min:Sec	5:18	3:32	2:39	2:07	1:46

FREEPORT, ILLINOIS  
Orig 09015

42° 15'N-89° 35'W

# ILS or LOC RWY 24

EC-3, 22 OCT 2009 to 19 NOV 2009

EC-3, 22 OCT 2009 to 19 NOV 2009