

RNAV (GPS) RWY 12

WAAS CH 82106 W12A	APP CRS 125°	Rwy Idg 7220 TDZE 1182 Apt Elev 1182
--	------------------------	---

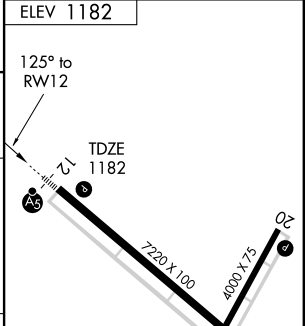
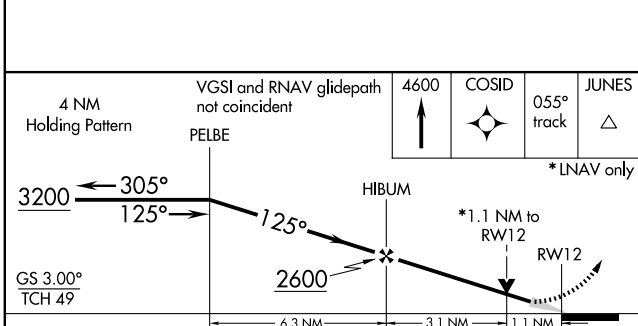
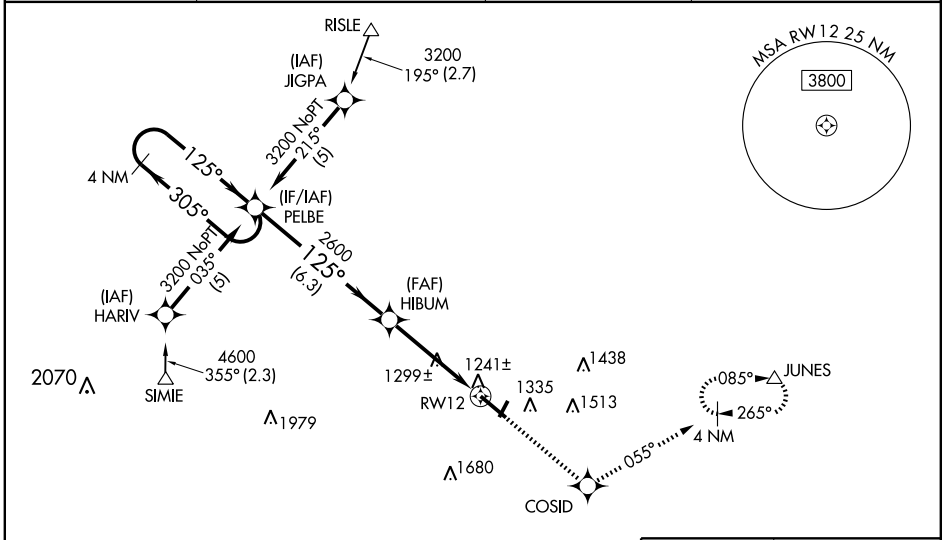
MARSHALL/
SOUTHWEST MINNESOTA RGNL MARSHALL/RYAN FIELD (MML)

- ▼** DME/DME RNP-0.3 NA.
- ▲** When local altimeter setting not received, use Tracy Muni altimeter setting and increase all DAs/MDAs 60 feet and LNAV Cat. C visibility ¼ mile.
- ⚠** VDP and Baro-VNAV NA when using Tracy Muni altimeter setting. For uncompensated Baro-VNAV systems, LNAV/VNAV NA below -17°C (2°F) or above 46°C (114°F). For inoperative MALSRS when using Tracy Muni altimeter setting, increase LPV visibility to 1 mile all Cats. For inoperative MALSRS, increase LNAV Cat. D visibility to 1 ¼ mile.

MALSRS

MISSED APPROACH: Climb to 4600, direct COSID and via 055° track to JUNES and hold, continue climb-in-hold to 4600.

AWOS-3 111.0	MINNEAPOLIS CENTER 127.1 290.2	GCO 121.725	UNICOM 122.8 (CTAF)
------------------------	--	-----------------------	-------------------------------



CATEGORY	A	B	C	D
LPV DA		1432-½	250 (300-½)	
LNAV/ VNAV DA		1511-¾	329 (400-¾)	
LNAV MDA	1560-½	378 (400-½)		1560-1 378 (400-1)
CIRCLING	1640-1	458 (500-1)	1640-1½ 458 (500-1½)	1740-2 558 (600-2)

ELEV 1182

HIRL Rwy 12-30
REIL Rws 2-20 and 30
MIRL Rwy 2-20

NC-1, 22 OCT 2009 to 19 NOV 2009

NC-1, 22 OCT 2009 to 19 NOV 2009

RNAV (GPS) RWY 12