

MARSHALL, MINNESOTA

AL-5640 (FAA)

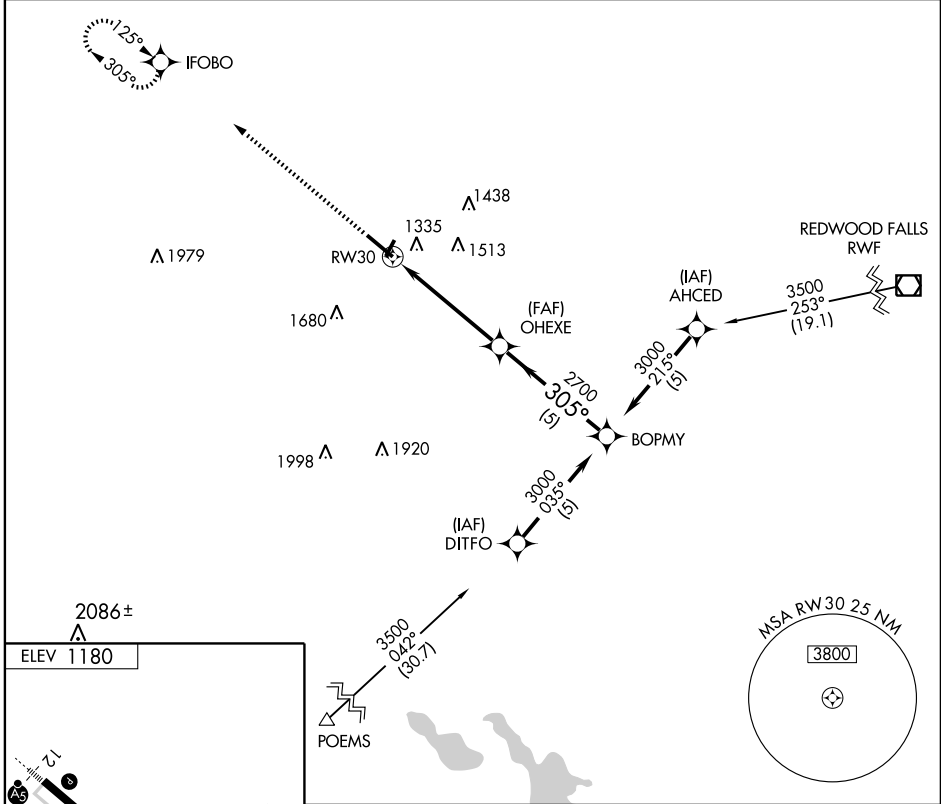
GPS RWY 30

APP CRS **305°**
 Rwy Idg **7220**
 TDZE **1180**
 Apt Elev **1180**

MARSHALL/ SOUTHWEST MINNESOTA RGNL MARSHALL/RYAN FIELD (MML)

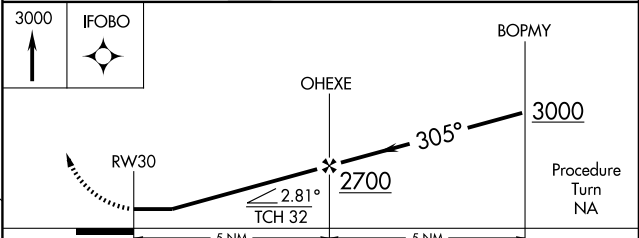
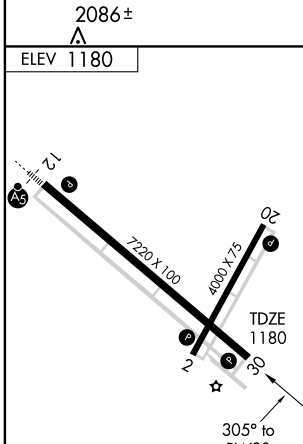
NA MISSED APPROACH: Climb to 3000 direct IFOBO WP and hold.

AWOS-3 **111.0** MINNEAPOLIS CENTER **127.1 290.2** GCO **121.725** UNICOM **122.8 (CTAF)**



NC-1, 22 OCT 2009 to 19 NOV 2009

NC-1, 22 OCT 2009 to 19 NOV 2009



HIRL Rwy 12-30
 REIL Rws 2-20 and 30
 MIRL Rwy 2-20

CATEGORY	A	B	C	D
S-30	1580-1 400 (400-1)		1580-1 ¼ 400 (400-1 ¼)	
CIRCLING	1640-1 460 (500-1)		1640-1 ½ 460 (500-1 ½)	1740-2 560 (600-2)

MARSHALL, MINNESOTA
 Orig-A 08157

MARSHALL/ SOUTHWEST MINNESOTA RGNL MARSHALL/RYAN FIELD (MML)
 44°27'N-95°49'W

GPS RWY 30