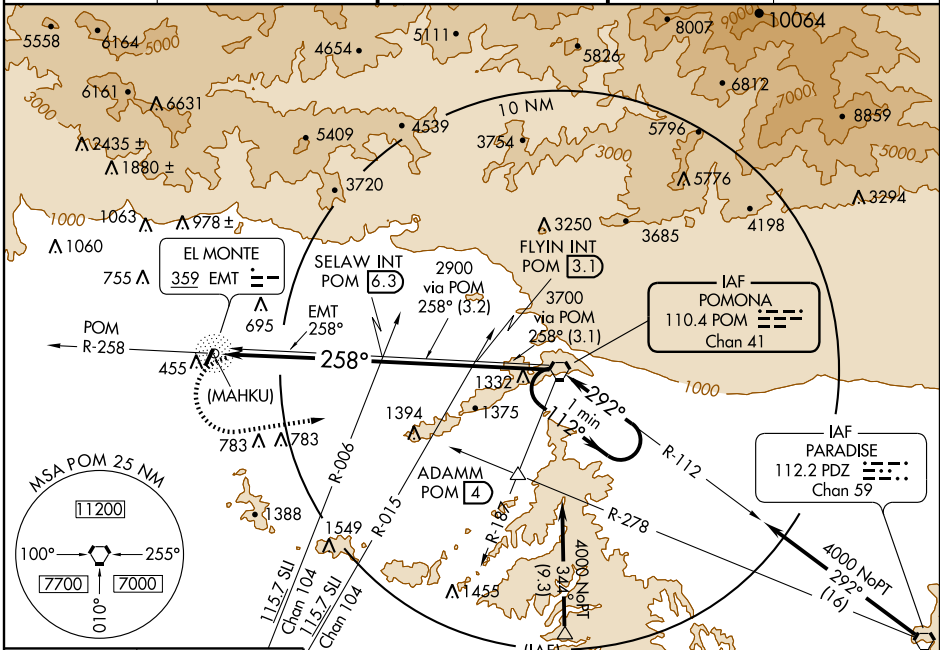


VOR or GPS-A EL MONTE (EMT)

VORTAC POM 110.4 Chan 41	APP CRS 258°	Rwy Idg TDZE Apt Elev 296	N/A N/A 296
--	------------------------	---	--

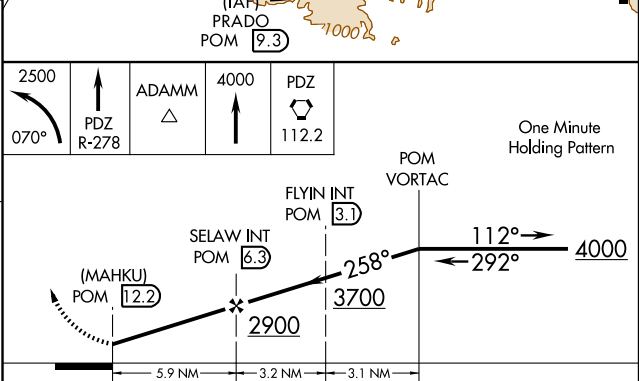
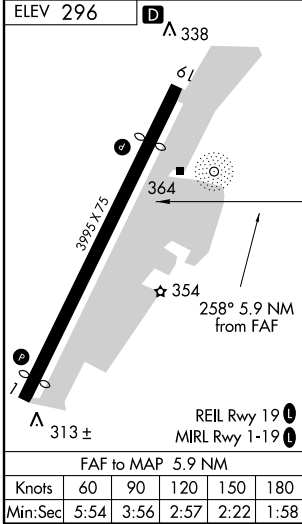
⚠ When local altimeter setting not received, use Ontario Intl altimeter setting. **MISSED APPROACH:** Climbing left turn to 2500 via heading 070° and PDZ R-278 to ADAMM Int, then continue climb to 4000 to PDZ VORTAC.

ATIS 118.75	SOCAL APP CON 125.5 349.0	EL MONTE TOWER * 121.2 (CTAF) 0	GND CON 125.9	UNICOM 122.95
-----------------------	-------------------------------------	---	-------------------------	-------------------------



SW-3, 22 OCT 2009 to 19 NOV 2009

SW-3, 22 OCT 2009 to 19 NOV 2009



CATEGORY	A	B	C	D
CIRCLING	1260-1¼ 964 (1000-1¼)	1260-1½ 964 (1000-1½)		NA
ONTARIO INTL ALTIMETER SETTING MINIMUMS				
CIRCLING	1400-1¼ 1104 (1200-1¼)	1400-1½ 1104 (1200-1½)		NA