

EL MONTE, CALIFORNIA

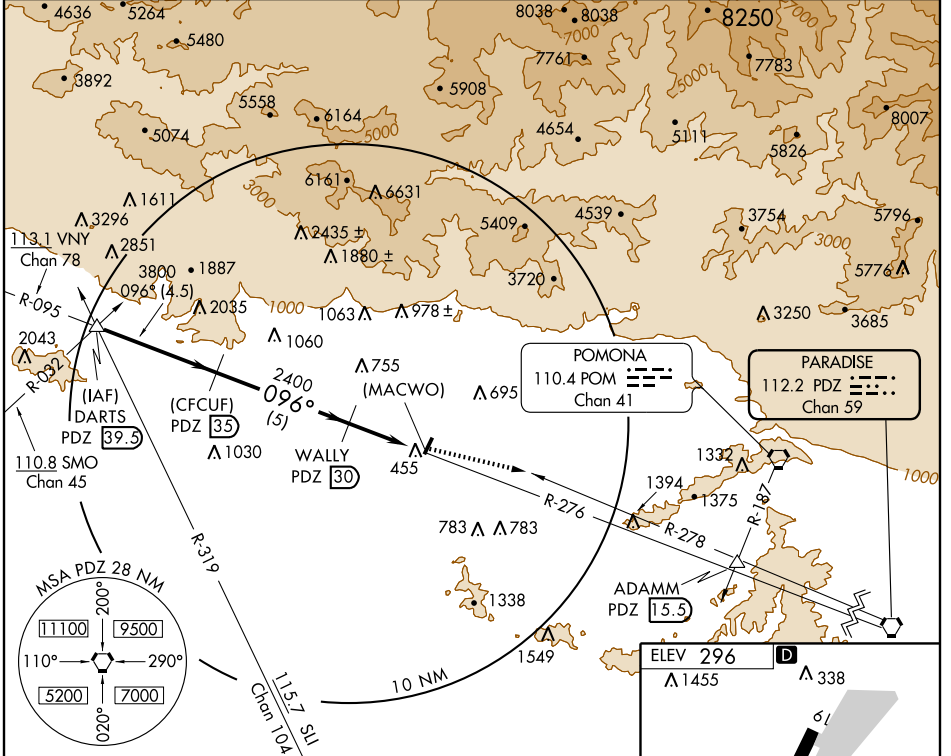
AL-5639 (FAA)

VOR/DME or GPS-B EL MONTE (EMT)

VORTAC PDZ 112.2 Chan 59	APP CRS 096°	Rwy Idg TDZE Apt Elev N/A N/A 296
--	------------------------	---

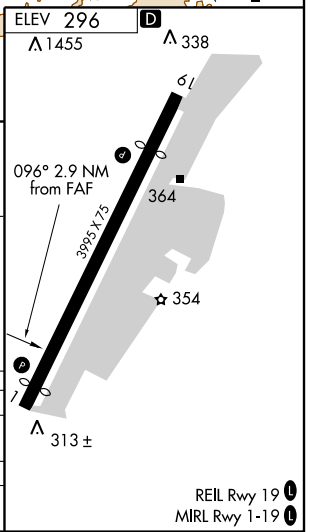
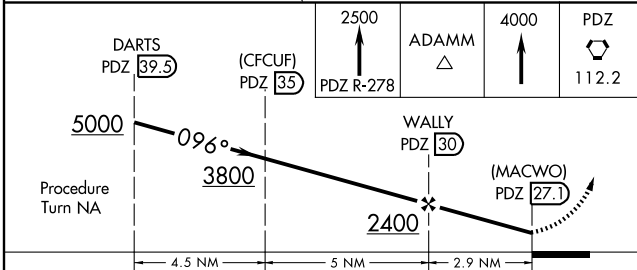
▼ When local altimeter setting not received, use Ontario Intl altimeter setting. **▲** MISSED APPROACH: Climb to 2500 via PDZ R-278 to ADAMM Int, then continue climb to 4000 to PDZ VORTAC.

ATIS 118.75	SOCAL APP CON 125.5 349.0	EL MONTE TOWER ★ 121.2 (CTAF) 0	GND CON 125.9	UNICOM 122.95
-----------------------	-------------------------------------	---	-------------------------	-------------------------



SW-3, 22 OCT 2009 to 19 NOV 2009

SW-3, 22 OCT 2009 to 19 NOV 2009



CATEGORY	A	B	C	D
CIRCLING	1340-1¼ 1044 (1100-1¼)	1340-1½ 1044 (1100-1½)		NA
ONTARIO INTL ALTIMETER SETTING MINIMUMS				
CIRCLING	1500-1¼ 1204 (1300-1¼)	1500-1½ 1204 (1300-1½)		NA

EL MONTE, CALIFORNIA
Amdt 3 08325

34°05'N - 118°02'W

VOR/DME or GPS-B EL MONTE (EMT)