

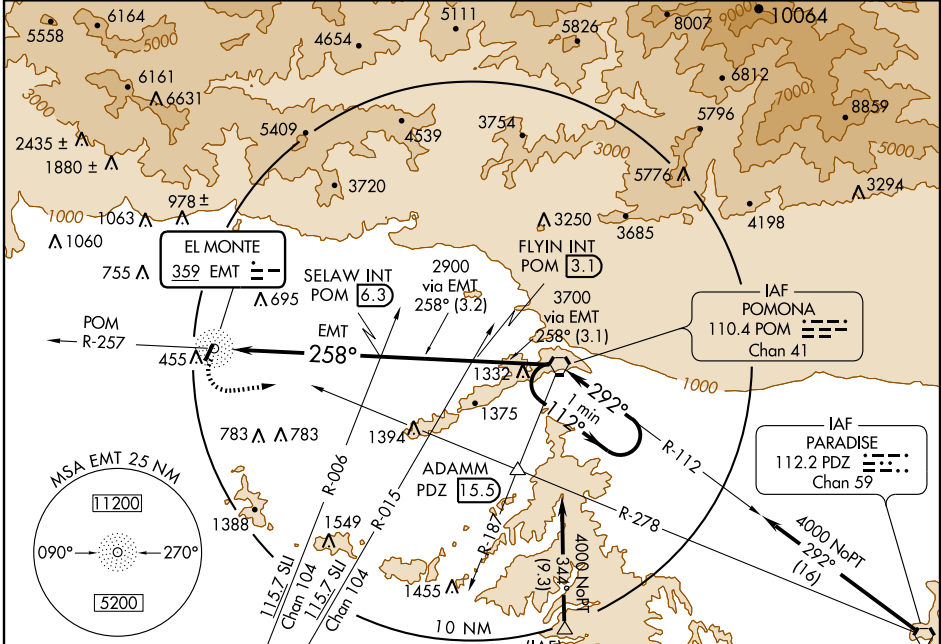
NDB or GPS-C EL MONTE (EMT)

NDB EMT 359	APP CRS 258°	Rwy Idg TDZE Apt Elev N/A 296
-----------------------	------------------------	--

⚠ When local altimeter setting not received, use Ontario Intl altimeter setting.

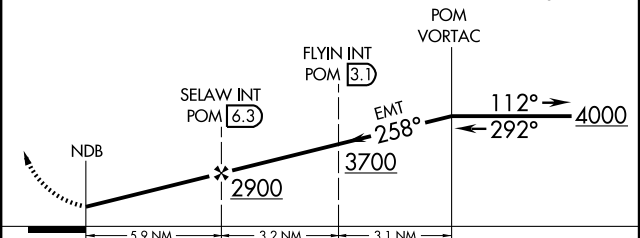
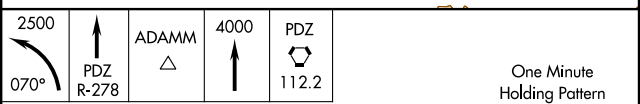
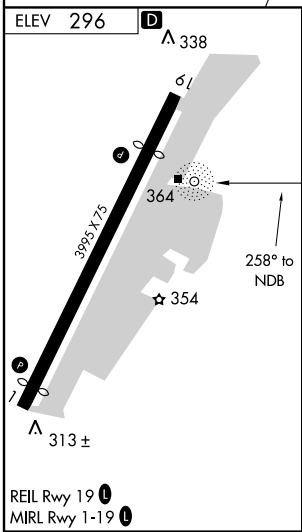
⚠ MISSED APPROACH: Climbing left turn to 2500 via heading 070° and PDZ R-278 to ADAMM Int, then continue climb to 4000 to PDZ VORTAC.

ATIS 118.75	SOCAL APP CON 125.5 349.0	EL MONTE TOWER* 121.2 (CTAF) 0	GND CON 125.9	UNICOM 122.95
-----------------------	-------------------------------------	--	-------------------------	-------------------------



SW-3, 22 OCT 2009 to 19 NOV 2009

SW-3, 22 OCT 2009 to 19 NOV 2009



CATEGORY	A	B	C	D
CIRCLING	1200-1¼	904 (1000-1¼)		NA
ONTARIO INTL ALTIMETER SETTING MINIMUMS				
CIRCLING	1340-1¼	1044 (1100-1¼)	1340-1½	1044 (1100-1½)
				NA