

KELSO, WASHINGTON

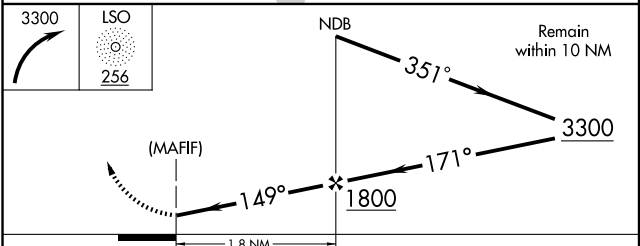
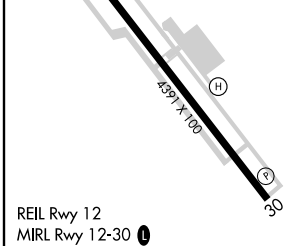
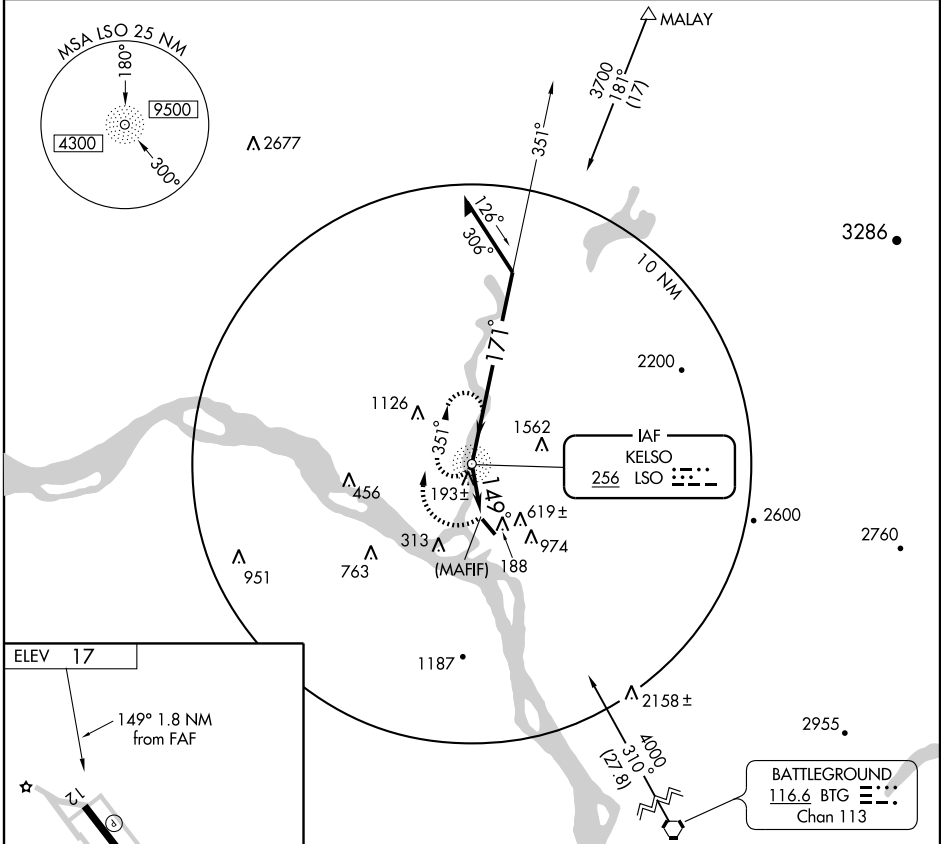
AL-5638 (FAA)

# NDB or GPS-A SOUTHWEST WASHINGTON RGNL (KLS)

NDB LSO <b>256</b>	APP CRS <b>149°</b>	Rwy Idg TDZE Apt Elev	<b>N/A</b> <b>N/A</b> <b>17</b>
-----------------------	------------------------	-----------------------------	---------------------------------------

**NA** Circling not authorized northeast of Rwy 12-30. MISSED APPROACH: Climbing right turn to 3300 direct LSO NDB and hold.

AWOS-3 <b>135.075</b>	SEATTLE CENTER <b>124.2 317.6</b>	UNICOM <b>122.8</b> (CTAF) <b>0</b>
--------------------------	--------------------------------------	--



FAF to MAP 1.8 NM						
Knots	60	90	120	150	180	
Min:Sec	1:48	1:12	0:54	0:43	0:36	
CATEGORY	A		B		C	D
CIRCLING	1120-1¼ 1103 (1200-1¼)		1120-1½ 1103 (1200-1½)		NA	

KELSO, WASHINGTON  
Amdt 5C 09295

46°07'N-122°54'W

SOUTHWEST WASHINGTON RGNL (KLS)  
**NDB or GPS-A**

NW-1, 22 OCT 2009 to 19 NOV 2009

NW-1, 22 OCT 2009 to 19 NOV 2009