

VOR/DME DTL 111.2 Chan 49	APP CRS 310°	Rwy Idg TDZE Apt Elev	4500 1388 1396
---	------------------------	-----------------------------	---

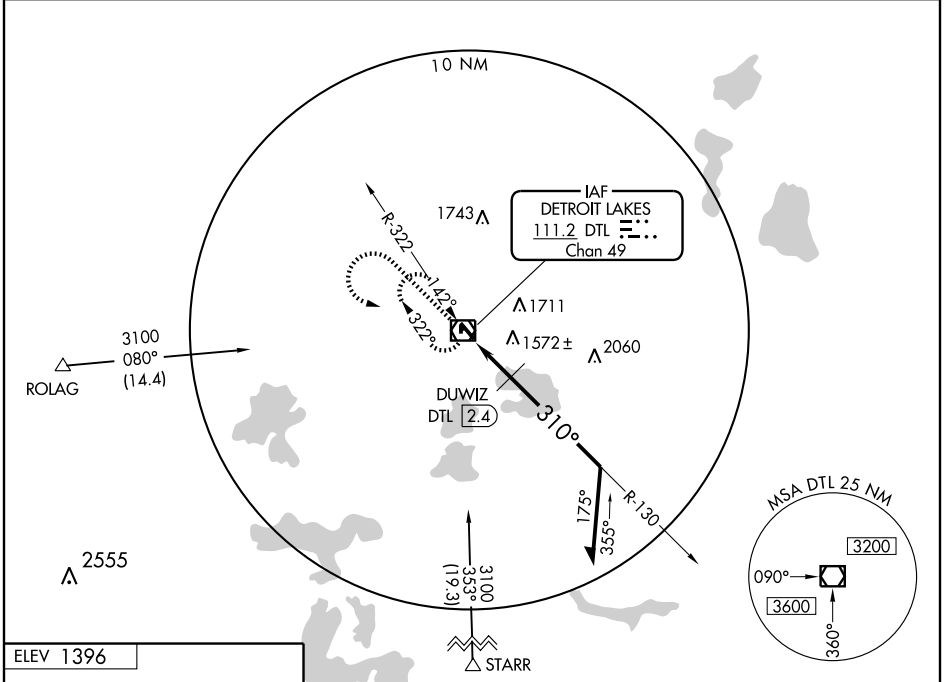
VOR RWY 31

DETROIT LAKES-WETHING FIELD (DTL)

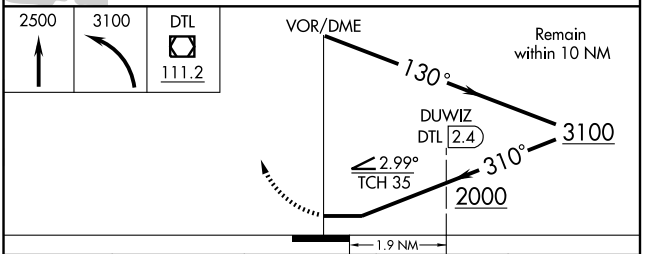
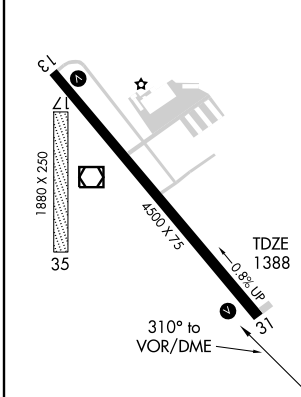
▲ NA

MISSED APPROACH: Climb to 2500 then climbing left turn to 3100 direct DTL VOR/DME and hold.

AWOS-3 111.2	PRINCETON RADIO 122.5	UNICOM 122.8 (CTAF) ①
------------------------	---------------------------------	--



ELEV 1396



CATEGORY	A	B	C	D
S-31	2000-1	612 (700-1)	2000-1¾ 612 (700-1¾)	2000-2 612 (700-2)
CIRCLING	2000-1	604 (700-1)	2000-1¾ 604 (700-1¾)	2080-2¼ 684 (700-2¼)
DUWIZ FIX MINIMUMS				
S-31	1880-1	492 (500-1)	1880-1¼ 492 (500-1¼)	1880-1½ 492 (500-1½)
CIRCLING	1880-1	1940-1	1940-1½ 544 (600-1½)	2080-2¼ 684 (700-2¼)

NC-1, 22 OCT 2009 to 19 NOV 2009

NC-1, 22 OCT 2009 to 19 NOV 2009