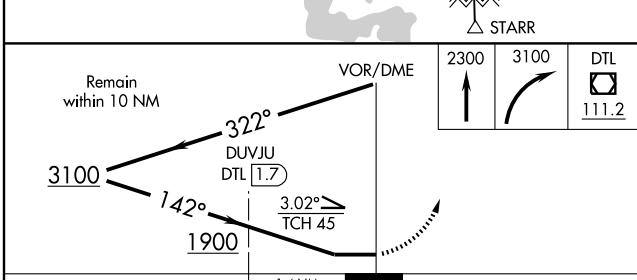
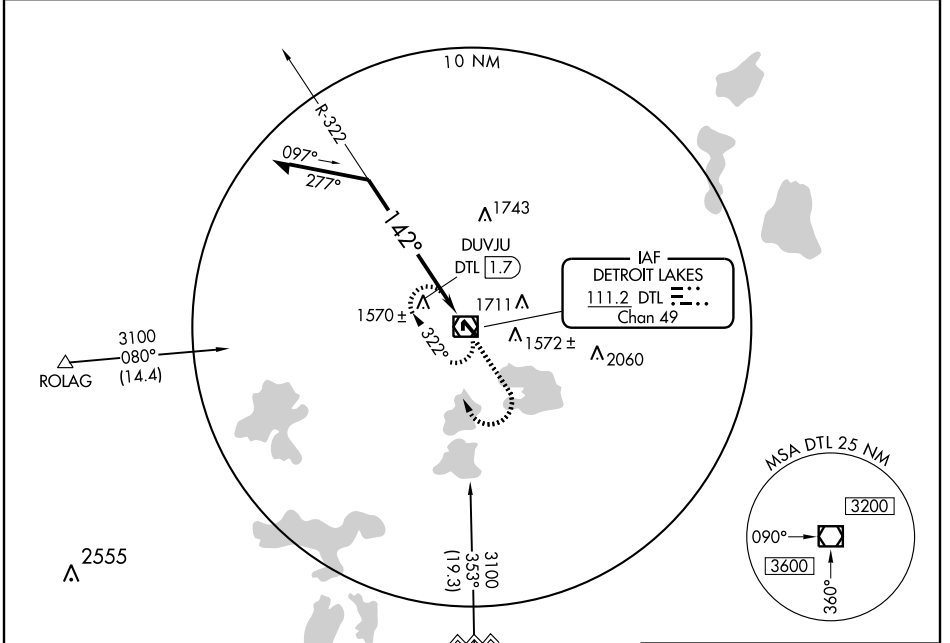


VOR/DME DTL 111.2 Chan 49	APP CRS 142°	Rwy Idg TDZE Apt Elev	4500 1396 1396
---	------------------------	-----------------------------	---

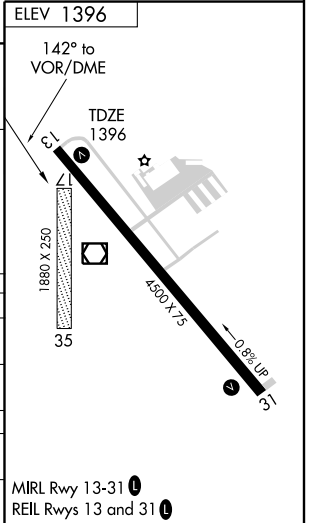
VOR RWY 13
DETROIT LAKES-WETHING FIELD (DTL)

NA MISSED APPROACH: Climb to 2300 then climbing right turn to 3100 direct DTL VOR/DME and hold.

AWOS-3 111.2	PRINCETON RADIO 122.5	UNICOM 122.8 (CTAF) L
------------------------	---------------------------------	--



CATEGORY	A	B	C	D
S-13	1900-1	504 (600-1)	1900-1½	504 (600-1½)
CIRCLING	1900-1 504 (600-1)	1940-1 544 (600-1)	1940-1½ 544 (600-1½)	2080-2¼ 684 (700-2¼)
DUVJU FIX MINIMUMS				
S-13	1820-1	424 (500-1)	1820-1¼	424 (500-1¼)
CIRCLING	1880-1 424 (500-1)	1940-1 544 (600-1)	1940-1½ 544 (600-1½)	2080-2¼ 684 (700-2¼)



NC-1, 22 OCT 2009 to 19 NOV 2009

NC-1, 22 OCT 2009 to 19 NOV 2009