

WAAS CH 86704 W31A	APP CRS 315°	Rwy Idg 4500 TDZE 1390 Apt Elev 1397
--	------------------------	---

RNAV (GPS) RWY 31

DETROIT LAKES-WETHING FIELD (DTL)

⚠ DME/DME RNP-0.3 NA. Visibility reduction by helicopters NA. VDP NA when using Park Rapids altimeter setting. If local altimeter setting not received, use Park Rapids altimeter setting and increase DA/MDAs 100 feet.

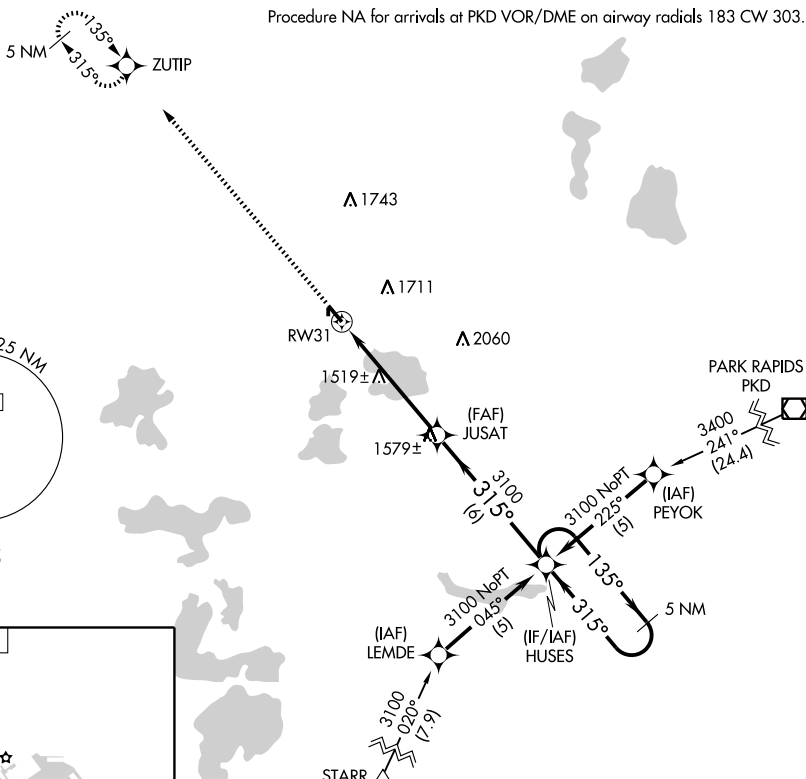
MISSED APPROACH: Climb to 3100 direct ZUTIP and hold.

AWOS-3
111.2

PRINCETON RADIO
122.5

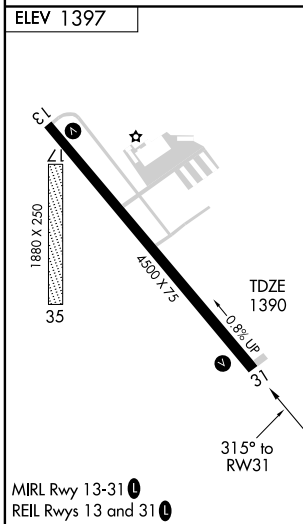
UNICOM
122.8 (CTAF) 0

Procedure NA for arrivals at PKD VOR/DME on airway radials 183 CW 303.



NC-1, 22 OCT 2009 to 19 NOV 2009

NC-1, 22 OCT 2009 to 19 NOV 2009



3100	ZUTIP	JUSAT	HUSES	5 NM Holding Pattern
*LNAV only	*1.2 NM to RW31	315°	135°	3100
		3100		GS 3.00°
	1.2	4.1 NM	6 NM	TCH 35
CATEGORY	A	B	C	D
LPV DA	1654-1 264 (300-1)			
LNAV MDA	1780-1 390 (400-1)			1780-1¼ 390 (400-1¼)
CIRCLING	1880-1 483 (500-1)	1940-1 543 (600-1)	1940-1½ 543 (600-1½)	2080-2¼ 683 (700-2¼)