

RNAV (GPS) RWY 9

PORTLAND MUNI (PLD)

APP CRS 092°	Rwy Idg TDZE Apt Elev	4002 923 926
------------------------	-----------------------------	---

NA DME/DME RNP-0.3 NA. When local altimeter setting not received, use Fort Wayne Intl altimeter setting and increase all MDA 100 ft, increase LNAV Cat C and D visibility ¼ mile, Circling Cat C ¼ mile. VDP NA when using Fort Wayne Intl altimeter setting.

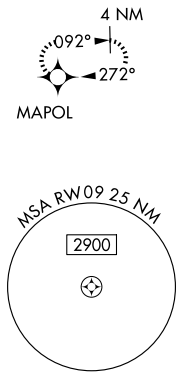
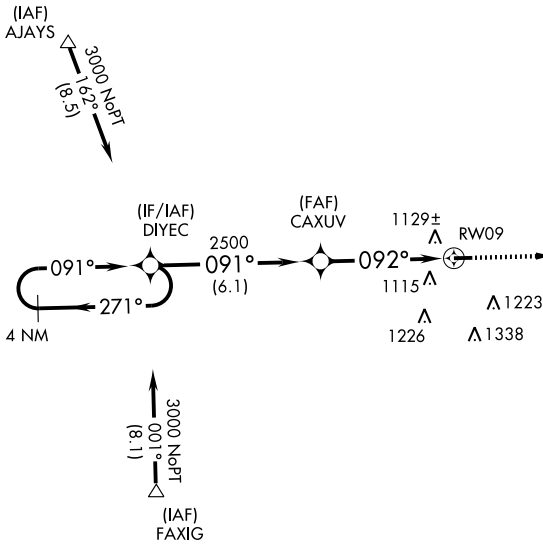
MISSED APPROACH: Climb to 3000 direct MAPOL and hold.

AWOS-3
118.45

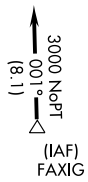
FORT WAYNE APP CON
132.15 (SE/NE) 284.6
127.2 (SW/NW) 284.6

UNICOM
122.8 (CTAF) 0

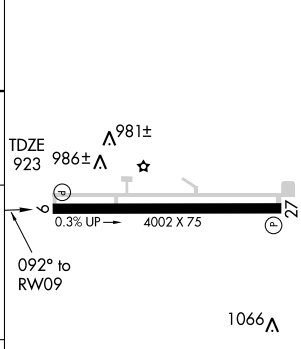
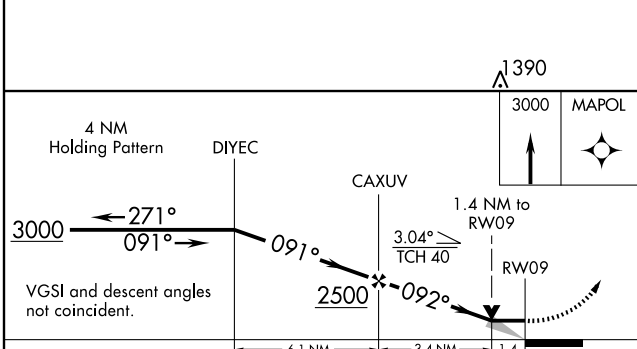
Procedure NA for arrivals at AJAYS via V221 northbound.



Procedure NA for arrivals at FAXIG via V14 southwest bound.



ELEV 926 Rwy 18 Idg 1675'
Rwy 36 Idg 1475'



CATEGORY	A	B	C	D
LNAV MDA	1400-1	477 (500-1)	1400-1½ 477 (500-1¼)	1400-1½ 477 (500-1½)
CIRCLING	1440-1	514 (600-1)	1440-1½ 514 (600-1½)	1480-2 554 (600-2)

MIRL Rwy 9-27 0
REIL Rwy 9 and 27 0

EC-2, 22 OCT 2009 to 19 NOV 2009

EC-2, 22 OCT 2009 to 19 NOV 2009