

# RNAV (GPS) RWY 27

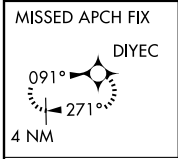
PORTLAND MUNI (PLD)

APP CRS <b>272°</b>	Rwy Idg TDZE Apt Elev	<b>4002</b> <b>926</b> <b>926</b>
------------------------	-----------------------------	---

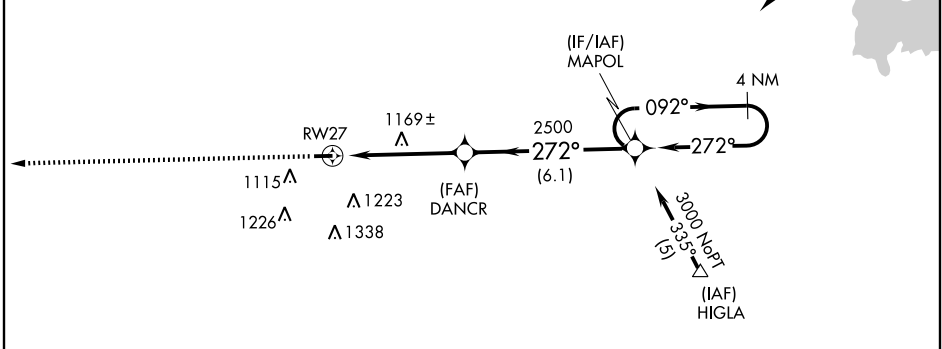
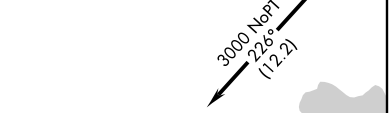
**⚠** DME/DME RNP-0.3 NA. Visibility reduction by helicopters NA. When local altimeter setting not received, use Fort Wayne Intl altimeter setting and increase all MDA 100 ft, increase LNAV Cat C and D visibility ¼ mile, Circling Cat C ¼ mile. VDP NA when using Fort Wayne Intl altimeter setting.

**MISSED APPROACH:** Climb to 3000 direct DIYEC and hold.

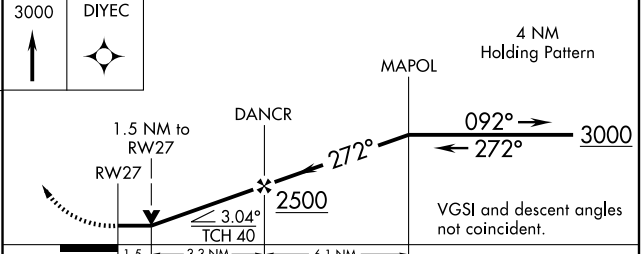
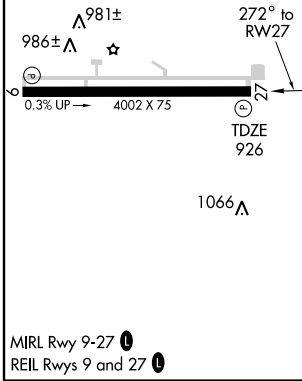
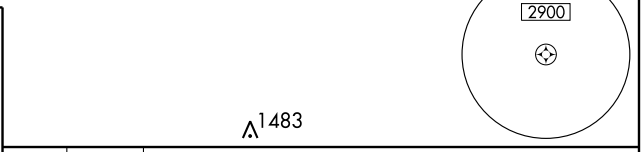
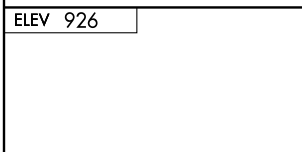
AWOS-3 <b>118.45</b>	FORT WAYNE APP CON <b>132.15 (SE/NE) 284.6</b> <b>127.2 (SW/NW) 284.6</b>	UNICOM <b>122.8 (CTAF) 0</b>
-------------------------	---	---------------------------------



Procedure NA for arrivals at NADIR via V14 northeast bound. (IAF) NADIR



Procedure NA for arrivals at HIGLA via V55 southeast bound.



CATEGORY	A	B	C	D
LNAV MDA	1420-1	494 (500-1)	1420-1¼ 494 (500-1¼)	1420-1½ 494 (500-1½)
CIRCLING	1440-1	514 (600-1)	1440-1½ 514 (600-1½)	1480-2 554 (600-2)

EC-2, 22 OCT 2009 to 19 NOV 2009

EC-2, 22 OCT 2009 to 19 NOV 2009