

VOR/DME AIR 117.1 Chan 118	APP CRS 274°	Rwy ldg 4004 TDZE 1313 Apt Elev 1313
--	------------------------	---

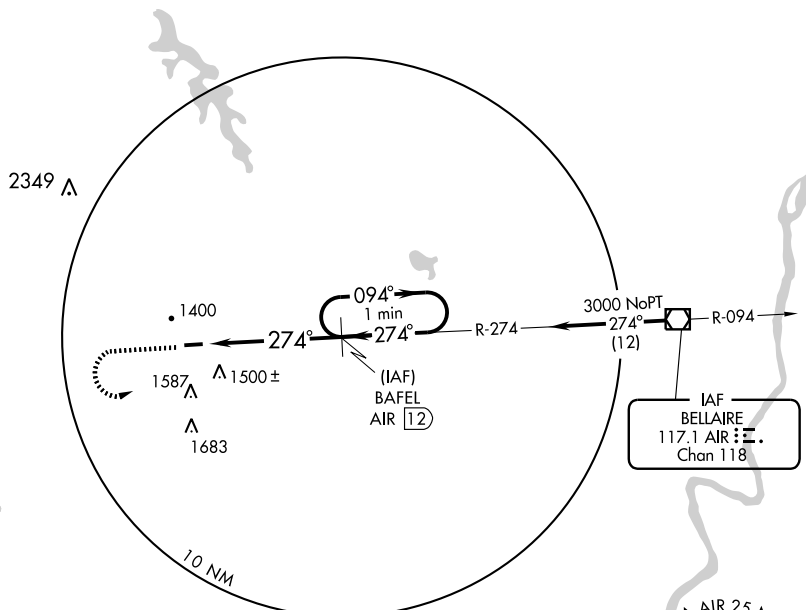
VOR/DME RWY 27

BARNESVILLE-BRADFIELD (6G5)

<p>▼ Use Wheeling, WV altimeter setting.</p> <p>▲ NA</p>	<p>MISSED APPROACH: Climb to 3000, then left turn via R-274 to BAFEL/12 DME and hold.</p>
<p>CLEVELAND CENTER 120.4 257.975</p>	<p>UNICOM 123.0 (CTAF)</p>

EC-2, 22 OCT 2009 to 19 NOV 2009

EC-2, 22 OCT 2009 to 19 NOV 2009



ELEV 1313 Rwy 9 ldg 3704'

MIRL Rwy 9-27
REIL Rwy 27

Knots	60	90	120	150	180
Min:Sec					

<p>3000</p> <p>↑ AIR R-274 117.1</p> <p>BAFEL AIR 12</p> <p>BAFEL AIR 12</p> <p>One Minute Holding Pattern</p> <p>094° → 3000</p> <p>← 274°</p> <p>5 NM</p>				
CATEGORY	A	B	C	D
S-27	1840-1	527 (600-1)	NA	
CIRCLING	1880-1	567 (600-1)	NA	